



**coralexpeditions**  
AUSTRALIA'S PIONEERING CRUISE LINE

2024 - 2025 VOYAGES

# PIONEERS OF THE KIMBERLEY



AUSTRALIAN  
OWNED AND  
FLAGGED

UNRIVALLED  
LOCAL  
EXPERTISE

A TRUE  
EXPEDITION  
ETHOS



PURPOSE  
BUILT  
SHIPS

WARM  
AUSTRALIAN  
HOSPITALITY

UNIQUELY  
DEEP  
CONNECTIONS



# SHARING THE KIMBERLEY WITH PRIDE



When we first started our expedition cruise operations in the Kimberley 30 years ago, we relied on experienced local knowledge, fishing lore and hand drawn mud maps to guide our adventures. As each year has passed our professional Australian crew have charted the region and built a knowledge bank that serves our guests well. This is a vast wilderness region shaped by powerful weather and tidal forces and even today much of the region remains uncharted. Every expedition in the Kimberley is different and we plan and adapt to enable us to be in the right place at the right time to truly discover the many layers of the destination.

Coral Expeditions has pioneered expedition cruising on the Kimberley coast and our crew has a deep knowledge and passion for the region that is unrivalled. This is one of the world's great wilderness landscapes, rich in natural, cultural, and historical significance. A place where legend and stories run deep and where experience matters to ensure that guests enjoy lasting connections to this special place.

As the Australian pioneers, we operate the largest season each year between April and October. Our fleet of three modern and intimate expedition ships are purpose built for the region unlike many of the new foreign flagged polar vessels operating short winter seasons in the Kimberley. We operate with a true expedition ethos; guiding small groups of like-minded guests through remote natural places with more time ashore, expert guidance and a warm Australian hospitality.

## Expedition Note

These are expedition itineraries covering remote regions. No two trips are ever the same in the ever changing Kimberley region. Your Captain and Expedition Team will make changes to the daily schedule when necessary to maximise your experience. These itineraries are indicative - some variation may occur due to weather conditions, safety or local community requirements.

The Kimberley is a bucket list adventure and a region best seen by small ship. We recognize it is also a significant investment for our guests to experience. The pride of our crew and our local expertise and respect for the Kimberley sets us apart from the competition and ensures that we deliver an unrivalled and authentic experience for our guests.

I invite you to join us in the Kimberley on a classic Australian adventure and find freedom in this vast and remote natural wilderness.

**Mark Fifield**  
Managing Director

## Voyages

- > **The Kimberley Cruise**  
10 Nights | Between Broome & Darwin  
Apr - Sep 2024 & 2025 | 42 departures per year
- > **Kimberley Icons, Ashmore Reef & Rowley Shoals**  
12 Nights | Between Broome & Darwin  
Sep 2024, Mar & Sep 2025 | 4 departures per year
- > **Best of the Kimberley and Tiwi Islands**  
10 Nights | Between Broome & Darwin  
Aug & Sep 2024, Jul & Aug 2025 | 2 departures per year

# WHY CHOOSE CORAL EXPEDITIONS

Our fleet of three specialised expedition ships and tenders take guests to some of the most beautiful, yet undiscovered islands and coastal regions of the world. Our guests are attracted by our relaxed small ship atmosphere and itineraries larger ships cannot replicate.

At a time when the cruise industry is moving to larger and less personal ships with more gimmicks, we have purposefully limited the size of our ships to maximise the expedition experience. Our cuisine is prepared in small batches from our onboard galley using quality Australian produce and wine. We operate to high Australian standards of safety with qualified Australian crew wherever we go. We were the first to offer interpretive programs reflective of the destinations we visit and to employ Expedition Leaders, Guest Lecturers, Marine Biologists, and SCUBA Instructors - a tradition that continues today.

- > **We focus on the destinations.** Connecting guests with nature, culture, and heritage with more time ashore in remote natural areas away from the crowds.
- > **A true expedition ethos.** Small ships mean fewer guests and more intimate and personal encounters along the way. We have deep respect and strong connections with the places we visit and maintain flexibility in our planning to make impromptu stops if extraordinary opportunities in nature present.
- > **Warm Australian hospitality.** Our all-Australian crew are passionate and proud to share the adventure with you. Always attentive and caring with a friendly and approachable style in keeping with our Australian values.
- > **Purpose built ships.** Designed for tropical expedition access, our fleet is comfortable, safe, and manoeuvrable enabling you to get in shallow and close to nature with ease where other operators cannot. Plenty of wide-open public spaces and all outward facing cabins connect you with the destination.
- > **Our unique Xplorer tenders.** The safari jeeps of the sea; our Xplorers enable guests safe and easy access onto excursions into remote rivers, reef systems and isolated beaches. All guests get out on excursion at once with no queues or waiting. Shade canopy to protect from the tropical sun, comfortable seats, open sides and audio systems enhance the journey. These are supported by Zodiacs along the way.
- > **Local expertise that is unrivalled.** Our expert guides and local crew have decades of experience to draw on regarding the tides, the charts, and the seasons. We get you to the right place at the right time and always explore in a respectful and caring manner.
- > **All inclusive.** Your cruise fare covers everything that matters most including excursions, activities, meals and drinks, expert guides, taxes, and fees. Unpack once and then simply relax and enjoy the experience.
- > **Our service and care.** Our friendly staff and crew have one focus - to help you enjoy the trip of a lifetime. We will always be willing to assist and with a genuine care that is part of our culture.

This is true expedition cruising. At Coral Expeditions we have built our reputation on offering a truly immersive and authentic expedition cruise experience. It is more relevant today than ever and sets us apart from the pack.

# THE KIMBERLEY CRUISE

**BROOME & DARWIN**

**10 NIGHTS | APRIL - SEPTEMBER 2024 & 2025**

**42 DEPARTURES PER YEAR**



①

## Expedition Highlights

- > Experience the thrill of riding the Horizontal Falls in inflatable Zodiac tender vessels
- > Get up close to Montgomery Reef and discover the tidal reef's diverse marine life
- > Witness King George River and 80m tall twin King George waterfalls
- > Cruise the Prince Regent River to the 'hanging garden' King Cascade waterfall
- > Encounter Indigenous rock art galleries and learn about ancient Wandjina and Gwion Gwion art
- > Spot native wildlife and birdlife in their natural habitat
- > View the Kimberley landscape by air on a scenic helicopter flight to Mitchell Falls (additional cost)
- > Enjoy sunset canapés and drinks on the beach as dusk settles over the Kimberley

See Page 10 for Departures & Fares

②



③



④



[VIEW AVAILABILITY & BOOK ONLINE >](#)



# ITINERARY: 10 NIGHTS > BETWEEN DARWIN & BROOME

## DAY 1: DEPART DARWIN OR BROOME

Board in Darwin at 8:00am for a 9:00am departure.  
Board in Broome at 4:00pm for a 5:00pm departure.

## DAYS 2-10: KEY DESTINATIONS OF YOUR EXPEDITION

### KING GEORGE RIVER & FALLS (OOMARI FALLS)

Fed by the King George River draining across the Gardner Plateau, 80m tall *Oomari* - King George Falls are the highest twin falls in Western Australia. Cruise through steep-sided gorges carved many millions of years ago to reach the base of the falls. In waterfall season, cruise under the mist of the falls by Zodiac, while in later months view the honeycomb erosion patterns of sandstone cliffs up close. The Falls is named *Oomari* by the Balangarra people.

### VANSITTART BAY (BANJAL)

Vansittart Bay is home to many cultural and historically significant sites like the remarkable *Ngula* - Jar Island Gwion Gwion (Bradshaw) rock art galleries estimated to be up to 20,000 years old. *Ngula* is the Wunambal Gaambera name for Jar Island. Nearby on the Anjo Peninsula, we explore the well-preserved wreckage of a US Air Force C-53 Skytrooper aircraft.

### MITCHELL FALLS, WINYALKAN, & SWIFT BAY

Carved through layers of sandstone, *Punamii-Uunpuu* - Mitchell Falls descends over four tiers, creating pools of emerald green on each level. An optional helicopter flight will provide a breathtaking view. At the top of the falls, sandstone terraces form a lookout from which to savour the serenity of this ancient landscape. Swift Bay reveals fine Wandjina and Gwion Gwion rock art galleries.

### PRINCE FREDERICK HARBOUR & BIGGE ISLAND (WUUYURU)

Prince Frederick Harbour is one of the Kimberley's most spectacular locations. The harbour is dotted with islands lined with mangroves and monsoon rainforests, set against a backdrop of ochre-hued escarpments.

White-bellied sea eagles and other birds of prey are often seen here, and at low tide expansive mudflats reveal large populations of mud-skippers and mangrove crabs. Cruise up Porosus Creek to spot wildlife and later explore rock art sites at Lumbarni Island.

### PRINCE REGENT RIVER & CAREENING BAY (WUNBUNG-GU)

Running on a fault line, this straight river is a haven for native species. Here we visit the beautiful King Cascade, a terraced waterfall. Falling from a considerable height and around 50m across, water tumbles down a staggered terrace of Kimberley sandstone, surrounded by grasses, mosses and ferns.

See the National Heritage Listed 'Mermaid Tree' at Careening Bay. It still bears the name carved by the carpenter of Phillip Parker King's ship *HMC Mermaid* when the ship was repaired here in 1820.

## MONTGOMERY REEF (YOWJAB)

Montgomery Reef is a biologically diverse area covering over 300sqkm. Twice daily, as the sea recedes in mammoth tides, Montgomery Reef rises from the ocean in a cascade of rushing water, revealing a flat-topped reef. Opportunistic birds take advantage of the marine life left exposed in rock pools, while turtles and larger marine life may also be spotted. Get up close to witness the spectacle, as our Expedition Team share their knowledge on the reef and wildlife that surrounds you.

## DOUBTFUL BAY & RAFT POINT (NGUMBREE)

*Ngumbirri* - Raft Point guards the entrance to sheltered Doubtful Bay, which harbours significant sites such as the ancient Wandjina rock art galleries. Doubtful Bay is the traditional country of the Worrora people who follow the Wandjina. Their stories, knowledge and culture have been recorded in stone for millennia.

Visit Red Cone Creek, which flows gently downstream until it meets Ruby Falls (subject to tides). Climb up rock formations like building blocks, to reach the freshwater swimming hole. If time permits we may also do an Xplorer cruise up the mighty Sale River.

## HORIZONTAL FALLS (GARAANNGADDIM)

Due to the mammoth tides for which the Kimberley is renowned, the Horizontal Falls are created as the ocean thunders through a narrow gorge in the McLarty Ranges. As the tide changes, water is forcibly pushed through the bottleneck, creating a rushing horizontal waterfall of swiftly flowing seawater. Experience a heart-pumping ride through the rapids aboard our Zodiacs.

## TALBOT BAY / BUCCANEER ARCHIPELAGO

Talbot Bay is at the heart of the Buccaneer Archipelago, where rocks on the 800 or so islands are estimated at over 2 billion years old. At Cyclone Creek, you will see evidence of massive geological forces in the impressive rock formations and cruise through the Iron Islands, past Koolan Island, before enjoying sunset drinks at Nares Point.

## THE LACEPEDES

Subject to weather and tides, we visit the Lacepede Islands. The low islands are a nature reserve and Important Bird Area, supporting up to 18,000 breeding pairs of Brown Boobies and Roseate Terns, as well as a significant breeding area for the Green Sea Turtle. We explore the island's lagoon by Zodiac and Xplorer, to spot many species of birds and marine wildlife.

## DAY 11: ARRIVE BROOME OR DARWIN

Disembark in Darwin at 8:30am  
Disembark in Broome at 8:00am

A post cruise transfer to the city or airport is included.

Seasons	Travel time
<b>Waterfall Season:</b> At the end of the wet season, experience rushing waterfalls and creeks, with abundant wildlife and lush greenery.	March to May
<b>Peak Season:</b> The most popular time to see the Kimberley. Enjoy optimum weather with cooler temperatures and no rain. The wildlife is abundant, and the landscape vibrant.	May to July
<b>Whale Season:</b> Humpback whales migrate to Kimberley waters and may be spotted during these months. The weather is hot and dry, with beautiful sunsets.	July to October



**Dr June Ross**  
Guest Lecturer

For over 30 years, June, an art-inspired archaeologist, delved into Kimberley rock art, leading projects like the Kimberley ARC. Her expertise spans teaching, research, and conservation collaboration with Indigenous communities, contributing significantly to academia and Australian Research Council initiatives as an Adjunct Professor at UNE.

# KIMBERLEY ICONS, ASHMORE & THE ROWLEY SHOALS

**BROOME & DARWIN**

**12 NIGHTS | SEPTEMBER 2024, MARCH & SEPTEMBER 2025**

**4 DEPARTURES PER YEAR**

①

## Expedition Highlights

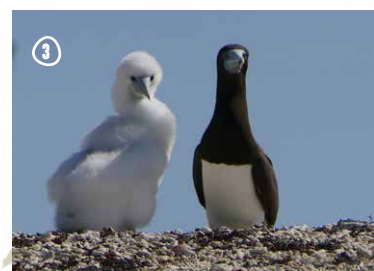
- > Cruise down scenic King George River getting up close to 80m tall sandstone cliffs
- > Experience the thrill of riding the Horizontal Falls in inflatable Zodiac tender vessels
- > Visit Indigenous rock art galleries and learn about ancient Wandjina and Gwion Gwion art
- > Birdwatch at Ashmore Reef and look out for turtles at Adele Island
- > Get up close to Montgomery Reef and discover the tidal reef's diverse marine life
- > Snorkel or dive the pristine and rarely visited Rowley Shoals Marine Park and Scott Reef, accompanied by our onboard Marine Biologist

See Page 10 for Departures & Fares

②



③



④



[VIEW AVAILABILITY & BOOK ONLINE >](#)



## ITINERARY: 12 NIGHTS > BETWEEN DARWIN & BROOME

### DEPART DARWIN OR BROOME

Board in Darwin at 8:00am for a 9:00am departure.  
Board in Broome at 4:00pm for a 5:00pm departure.

### KEY DESTINATIONS OF YOUR EXPEDITION

*This expedition visits remote outer reefs & islands. Access to these locations will be subject to weather conditions.*

### KING GEORGE RIVER & FALLS

Cruise down the scenic King George River through steep-sided gorges carved by a flooded river system that carved a swathe through the Kimberley landscape many years ago. We will take the opportunity to get up close and view the honeycomb erosion patterns of the 80m tall sandstone cliffs.

### A DAY OF ROCK ART

We land at either Jar Island, Swift Bay, Wollsatton Bay or Bigge Island. Each of these locations are home to fantastic Wandjina and Gwion Gwion Rock Art (Bradshaw) galleries. Stretch your legs and explore the magnificent sandstone structures, providing an abundance of rock shelters. On the walls of these shelters is where we will find examples of ancient rock art.

### ASHMORE REEF

Spend time exploring Ashmore Reef, a very special stop on our voyage. The rich marine environment is revealed with snorkelling and diving expeditions to discover vibrant populations of sea snakes, turtles and complex coral reefs. Cruise the lagoons by tender to spot the colonies of seabirds.

### SCOTT REEF

Located 300km off the coast of the Kimberley, Scott Reef has been treacherous to shipping. We will visit the wreck of the Yarra, where an iron barque was driven onto the reef in 1884, as well as go on a snorkelling or diving expedition to discover the outer walls of the reef.

### ADELE ISLAND

150km off Cape Leveque, Adele Island is a Class A reserve and Important Bird Area due to innumerable birds that breed here. The turquoise waters surrounding the island are also home to fish, sharks, turtles, and stingrays.

### MONTGOMERY REEF

Montgomery Reef covers over 300 sq km. As the sea recedes in mammoth tides, the reef rises from the ocean in a cascade of rushing water. Opportunistic birds take advantage of the marine life left exposed in rock pools, while turtles and larger marine life may also be spotted. Witness the spectacle up close, as our Expedition Team share their knowledge on the reef and wildlife.

### TRIP LOG

"Guests received a mandatory snorkelling brief to prepare one and all for our first expedition on the Kimberley Coast...

As we set off we could see a Humpback whale breaching and tail slapping beyond our destination - 'The Aquarium' at Clerke Reef, Rowley Shoals. The water was a lovely 26° Celsius. We saw the most amazing reef; brilliant colours and so many fish."

**Wildlife spotted:** Sea cucumbers, blue links sea stars, and fish including rabbitfish, damsels, parrot fish, unicorn fish, trevally, Maori wrasse, blue green chromis, surgeon fish, starry-eyed puffer fish, triggerfish, long tom, gar, eagle ray, white tip reef sharks, juvenile green sea turtles, and flying fish.

### ROWLEY SHOALS, 14 SEPTEMBER 2023

### DOUBTFUL BAY

Raft Point guards the entrance to sheltered Doubtful Bay, which harbours significant sites such as the ancient Wandjina rock art galleries. Visit Red Cone Creek and beautiful Ruby Falls and climb up the rock formations to reach the freshwater swimming hole. We may also visit Steep Island.

### HORIZONTAL FALLS (GARAANNGADDIM) & TALBOT BAY / BUCCANEER ARCHIPELAGO

Due to the mammoth tides for which the Kimberley is renowned, the Horizontal Falls are created as the ocean thunders through a narrow gorge in the McLarty Ranges. Experience a heart-pumping ride through the rapids aboard our Zodiacs.

Talbot Bay is at the heart of the Buccaneer Archipelago, where rocks on the 800 or so islands are estimated at over 2 billion years old. At Cyclone Creek, you will see evidence of massive geological forces in the impressive rock formations and cruise through the Iron Islands past Koolan Island.

### THE LACEPEDE ISLANDS

Subject to weather and tides, we visit the Lacepede Islands. The low islands are a nature reserve and Important Bird Area, supporting up to 18,000 breeding pairs of Brown Boobies and Roseate Terns, as well as a significant breeding area for the Green Sea Turtle. We explore the island's lagoon by Zodiac and Xplorer to spot many species of birds and marine wildlife.

### ROWLEY SHOALS

At the edge of the continental shelf, 170 nautical miles offshore, lie the Rowley Shoals, a chain of three coral atolls including Clerke, Mermaid and Imperieuse Reefs. The shoals offer some of the best snorkelling and diving opportunities in the world. Their shallow lagoons are inhabited by myriad coral species and marine life, including giant potato cod, Maori wrasse, at least 233 species of coral and 688 species of fish. Water clarity here is unparalleled, making for superb underwater photography opportunities. Conditions permitting, we will spend 1-2 days here for snorkelling and diving opportunities. Guided by our marine biologist, snorkel away the day in the coral gardens of the Aquarium at Clerke Reef, try a drift snorkel in the channel, or beach comb on Bedwell Island.

### ARRIVE BROOME OR DARWIN

Disembark in Darwin at 8:30am  
Disembark in Broome at 8:00am

A post cruise transfer to the city or airport is included.

### Ian Herford Guest Lecturer

Ian has a bachelor's degree in geology and a Master of Science degree in Natural Resource Management. During his career Ian worked as a geologist, and later in national parks, reserve, and broader conservation management. Since retiring, Ian indulges in his love of sharing the wonders of the natural world with a wide range of audiences, including schools, universities, and community groups.



# BEST OF THE KIMBERLEY AND TIWI ISLANDS

**BROOME & DARWIN**

**10 NIGHTS | AUGUST & SEPTEMBER 2024, JULY & AUGUST**

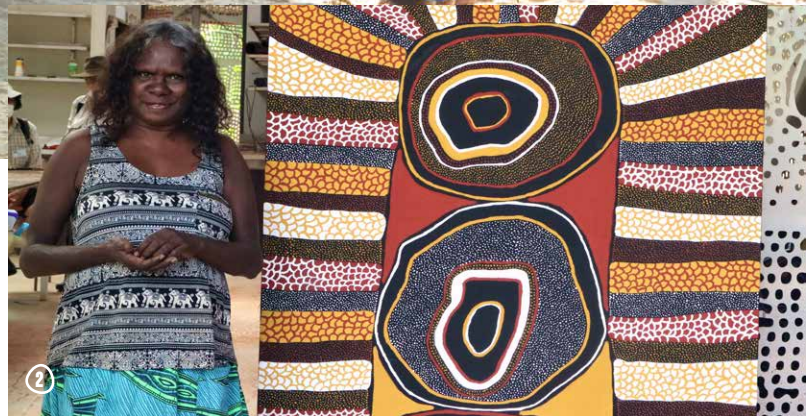
**2 DEPARTURES PER YEAR**



①

## Expedition Highlights

- > Visit Munupi Arts and Tiwi Design centres to discover both traditional and contemporary Tiwi art where you can purchase directly from the source
- > Enjoy a hosted walk on country in the company of a local Tiwi guide and enjoy a traditional dance performance
- > Gain valuable historical and cultural insights from our expert expedition team and local guides
- > Partake in onboard art workshops under the guidance of a special guest artist and learn the skills of lino cutting, paper printing + more
- > Walk among ancient Indigenous rock art galleries at Swift Bay, Bigge Island, Wollaston Bay and Vansittart Bay and learn about Wandjina and Gwion Gwion art history
- > Enjoy wilderness cruising on our Xplorer vessels through the pristine marine sanctuary of the Lacapedes to spot rare seabirds, mating turtles and juvenile sharks and rays in the protected marine nursery
- > Enjoy the thrill of a Zodiac ride through the rapids of the Horizontal Waterfall at Talbot Bay and be amazed tidal phenomena of Montgomery Reef as it emerges from the ocean depths on the lowering tide



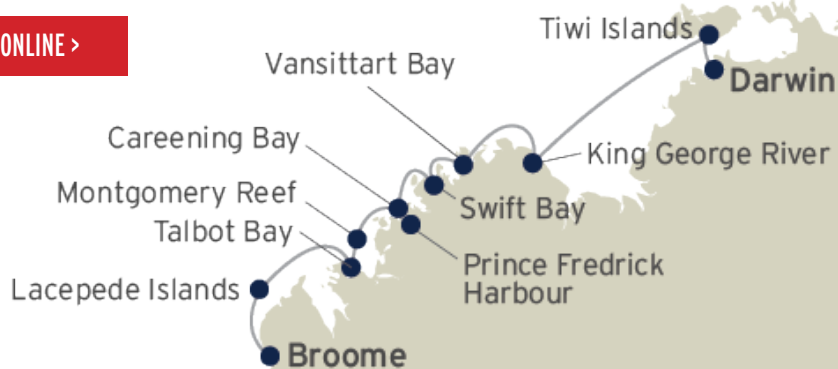
②



③

See Page 10 for Departures & Fares

[VIEW AVAILABILITY & BOOK ONLINE >](#)





## ITINERARY HIGHLIGHTS: 10 NIGHTS > BETWEEN DARWIN & BROOME

### DAY 1: DEPART DARWIN OR BROOME

Board in Darwin at 8:00am for a 9:00am departure.  
Board in Broome at 4:00pm for a 5:00pm departure.

### THE LACEPEDES

Subject to weather and tides, we visit the Lacepede Islands. The low islands are a nature reserve and Important Bird Area, supporting up to 18,000 breeding pairs of brown boobies and roseate terns, as well as a significant breeding area for the green sea turtle. We explore the island's lagoon by Zodiac and Xplorer, to spot many species of birds and marine wildlife.

### TALBOT BAY / BUCCANEER ARCHIPELAGO

Talbot Bay is at the heart of the Buccaneer Archipelago, where rocks on the 800 or so islands are estimated at over 2 billion years old. At Cyclone Creek, you will see evidence of massive geological forces in the impressive rock formations and cruise through the Iron Islands, past Koolan Island, before enjoying sunset drinks at Nares Point.

### MONTGOMERY REEF (YOWJAB)

Montgomery Reef is a biologically diverse area covering over 300sqkm. Twice daily, as the sea recedes in mammoth tides, Montgomery Reef rises from the ocean in a cascade of rushing water, revealing a flat-topped reef. Opportunistic birds take advantage of the marine life left exposed in rock pools, while turtles and larger marine life may also be spotted. Get up close to witness the spectacle, as our Expedition Team share their knowledge on the reef and wildlife that surrounds you.

### CAREENING BAY (WUNBUNG-GU) & PRINCE REGENT RIVER

Discover Bigge Island, lying some 6 kilometres from the mainland separated by the Scott Strait. Walk along the cliffs and cave walls to admire the art works including depictions of Wandjina figures. The island plays an important role in future wildlife conservations as it is free from feral predators, which allows rare vulnerable species to thrive including the northern quoll, scaly-tailed possum and monjon - the smallest member of the rock wallaby family.

Careening Bay is the site of the famous Mermaid Boab Tree, but it is also home to plenty of birdlife. Bar-shouldered doves call throughout the day and great bowerbirds are common here. Also seen in the mangroves behind the beach are shining flycatcher, red-headed honeyeater, brown honeyeater, black-faced cuckoo shrike and little friarbird.

Prince Regent River runs on a fault line, this straight river is a haven for native species. Here we visit the beautiful King Cascade, a terraced waterfall. Falling from a considerable height and around 50m across, water tumbles down a staggered terrace of Kimberley sandstone, surrounded by grasses, mosses and ferns.

### PRINCE FREDERICK HARBOUR (WUUYURU) - ONLY BROOME DEPARTURE -

Prince Frederick Harbour is one of the Kimberley's most spectacular locations. The harbour is dotted with islands lined with mangroves and monsoon rainforests, set against a backdrop of ochre-hued escarpments.

White-bellied sea eagles and other birds of prey are often seen here, and at low tide expansive mudflats reveal large populations of mud-skipper and mangrove crabs. Cruise up Porosus Creek to spot wildlife and later explore rock art sites at Lumbarni Island.

### SWIFT BAY - A DAY OF ROCK ART

Swift Bay is home to historical Wandjina and Gwion Gwion Rock Art (Bradshaw) galleries. Stretch your legs and explore the magnificent sandstone structures, providing an abundance of rock shelters. On the walls of these shelters is where we will find examples of this rock art. If tide and time permit, we may also visit another art site at Wollaston Bay, a former sea-cave in the low sandstone cliff.

### VANSITTART BAY (BANJAL)

Vansittart Bay is home to many cultural and historically significant sites like the remarkable *Ngula* - Jar Island Gwion Gwion (Bradshaw) rock art galleries estimated to be up to 20,000 years old. *Ngula* is the Wunambal Gaambera name for Jar Island. Nearby on the Anjo Peninsula, we explore the well-preserved wreckage of a US Air Force C-53 Skytrooper aircraft.

### KING GEORGE RIVER & FALLS (OOMARI FALLS)

Fed by the King George River draining across the Gardner Plateau, 80m tall *Oomari* - King George Falls are the highest twin falls in Western Australia. Cruise through steep-sided gorges carved many millions of years ago to reach the base of the falls. In waterfall season, cruise under the mist of the falls by Zodiac, while in later months view the honeycomb erosion patterns of sandstone cliffs up close. The Falls is named *Oomari* by the Balangarra people.

### TIWI ISLANDS

Experience a traditional welcome ceremony and morning tea (damper and billy tea). On a guided tour, learn of the culture and history of the Tiwis as we explore the museum and the old mission precinct.

Visit Tiwi Design, one of the oldest and most artistically diverse art centres in Australia and produces ochre paintings on canvas and bark, ironwood carvings, screen printed fabrics, ceramics, bronze/glass sculptures and limited edition prints. Under the guidance of a local artist, enjoy an afternoon art session to create your own artwork to take home.

On Melville Island, learn about both traditional and contemporary art on a visit to wholly Indigenous owned Munupi Arts at Pirlangimpi. We will have the opportunity to purchase traditional Tiwi artworks including paintings, fabrics, carving, pottery and clothing at island prices.

### ARRIVE DARWIN OR BROOME

Disembark in Darwin at 8:30am  
Disembark in Broome at 8:00am

A post cruise transfer to the city or airport is included.



Photo: munupiart.com

### Paulina Puruntatameri Guest Artist

Paulina Puruntatameri, also known as Jedda, is an expert in Tiwi language and art. Paulina is a senior Cultural Leader and advisor to the Munupi Boards of Directors. With years of experience, she provides valuable Tiwi language translations, facilitating a deeper connection between art and culture. Paulina is passionate about the preservation of culture, language, art, and songs.

# 2024 DEPARTURES & FARES

## THE KIMBERLEY CRUISE

VISIT >

10 Nights - Departs Darwin & Broome

### Coral Geographer

Date	Departs	Date	Departs
8 May 2024	Darwin	10 July 2024	Darwin
18 May 2024	Broome	20 July 2024	Broome
29 May 2024	Darwin	31 July 2024	Darwin
8 June 2024	Broome	10 August 2024	Broome
19 June 2024	Darwin	21 August 2024	Darwin
29 June 2024	Broome		

### Rates

	Bridge Deck Balcony Suite	Explorer Deck	Promenade Deck	Coral Deck
Twin Share	\$27,700	\$20,600	\$15,500	\$12,800
Sole Use	n/a	\$30,900*	\$23,250*	\$19,200*

### Coral Adventurer

Date	Departs	Date	Departs
05 April 2024	Broome	18 June 2024	Darwin
16 April 2024	Darwin	28 June 2024	Broome
26 April 2024	Broome	09 July 2024	Darwin
07 May 2024	Darwin	19 July 2024	Broome
17 May 2024	Broome	30 July 2024	Darwin
28 May 2024	Darwin	09 August 2024	Broome
07 June 2024	Broome		

### Rates

	Bridge Deck Balcony Suite	Bridge Deck Stateroom	Explorer Deck	Promenade Deck	Coral Deck
Twin Share	\$28,900	\$22,500	\$20,600	\$15,500	\$12,800
Sole Use	n/a	n/a	\$30,900*	\$23,250*	\$19,200*

### Coral Discoverer

Date	Departs	Date	Departs
12 April 2024	Darwin	24 June 2024	Broome
22 April 2024	Broome	05 July 2024	Darwin
03 May 2024	Darwin	15 July 2024	Broome
13 May 2024	Broome	26 July 2024	Darwin
24 May 2024	Darwin	05 August 2024	Broome
03 June 2024	Broome	16 August 2024	Darwin
14 June 2024	Darwin	28 September 2024	Broome

### Rates

	Bridge Deck Stateroom	Promenade Deck Cat A	Promenade Deck Cat B	Main Deck Cat A	Main Deck Cat B
Twin Share	\$18,550	\$14,950	n/a	\$12,450	\$11,850
Sole Use	n/a	n/a	\$19,425*	n/a	n/a

## KIMBERLEY ICONS, ASHMORE & THE ROWLEY SHOALS

VISIT >

12 Nights - Departs Darwin to Broome

### Coral Adventurer

Date	Departs
10 September 2024	Darwin

### Rates

	Bridge Deck Balcony Suite	Bridge Deck Stateroom	Explorer Deck	Promenade Deck	Coral Deck
Twin Share	\$23,240	\$18,090	\$16,550	\$12,410	\$10,340
Sole Use	n/a	n/a	\$24,825*	\$18,615*	\$15,510*

## BEST OF THE KIMBERLEY & TIWI ISLANDS

VISIT >

10 Nights - Departs Darwin & Broome

### Coral Discoverer

Date	Departs
26 August 2024	Broome
6 September 2024	Darwin

### Rates

	Bridge Deck Stateroom	Promenade Deck Cat A	Promenade Deck Cat B	Main Deck Cat A	Main Deck Cat B
Twin Share	\$16,930	\$13,640	n/a	\$11,540	\$10,820
Sole Use	n/a	n/a	\$18,135*	n/a	n/a

Prices are per person, listed in Australian Dollars (AUD) and include GST.

An optional Mitchell Falls Helicopter Flight is available at additional cost of approximately \$695 per person (2023), bookable onboard.

Refer to website pricing at time of booking as pricing may be subject to change.  
\*Limited sole use occupancy available.



A flatback sea turtle nests during sunset drinks on the beach

# 2025 DEPARTURES & FARES

## THE KIMBERLEY CRUISE

VISIT >

10 Nights - Departs Darwin & Broome

### Coral Geographer

Date	Departs	Date	Departs
8 April 2025	Darwin	20 June 2025	Broome
18 April 2025	Broome	1 July 2025	Darwin
29 April 2025	Darwin	11 July 2025	Broome
9 May 2025	Broome	22 July 2025	Darwin
20 May 2025	Darwin	1 August 2025	Broome
30 May 2025	Broome	12 August 2025	Darwin
10 June 2025	Darwin	22 August 2025	Broome

### Rates

	Bridge Deck Balcony Suite	Explorer Deck	Promenade Deck	Coral Deck
<b>Twin Share</b>	\$27,700	\$20,600	\$15,500	\$12,800
<b>Sole Use</b>	n/a	\$30,900*	\$23,250*	\$19,200*

### Coral Adventurer

Date	Departs	Date	Departs
5 April 2025	Broome	18 June 2025	Darwin
16 April 2025	Darwin	28 June 2025	Broome
26 April 2025	Broome	9 July 2025	Darwin
7 May 2025	Darwin	19 July 2025	Broome
17 May 2025	Broome	30 July 2025	Darwin
28 May 2025	Darwin	9 August 2025	Broome
7 June 2025	Broome		

### Rates

	Bridge Deck Balcony Suite	Bridge Deck Stateroom	Explorer Deck	Promenade Deck	Coral Deck
<b>Twin Share</b>	\$28,900	\$22,500	\$20,600	\$15,500	\$12,800
<b>Sole Use</b>	n/a	n/a	\$30,900*	\$23,250*	\$19,200*

### Coral Discoverer

Date	Departs	Date	Departs
13 April 2025	Darwin	16 June 2025	Broome
23 April 2025	Broome	27 June 2025	Darwin
4 May 2025	Darwin	7 July 2025	Broome
26 May 2025	Broome	18 July 2025	Darwin
6 June 2025	Darwin		

### Rates

	Bridge Deck Stateroom	Promenade Deck Cat A	Promenade Deck Cat B	Main Deck Cat A	Main Deck Cat B
<b>Twin Share</b>	\$18,550	\$14,950	n/a	\$12,450	\$11,850
<b>Sole Use</b>	n/a	n/a	\$19,425*	n/a	n/a

## KIMBERLEY ICONS, ASHMORE & THE ROWLEY SHOALS

VISIT >

12 Nights - Departs Darwin to Broome

### Coral Geographer

Date	Departs
12 September 2025	Broome
25 September 2025	Darwin

### Rates

	Bridge Deck Balcony Suite	Explorer Deck	Promenade Deck	Coral Deck
<b>Twin Share</b>	\$22,990	\$17,130	\$12,840	\$10,700
<b>Sole Use</b>	n/a	\$25,695*	\$19,260*	\$16,050*

### Coral Adventurer

Date	Departs
11 March 2025	Broome
24 March 2025	Darwin

### Rates

	Bridge Deck Balcony Suite	Bridge Deck Stateroom	Explorer Deck	Promenade Deck	Coral Deck
<b>Twin Share</b>	\$23,850	\$18,540	\$17,130	\$12,840	\$10,700
<b>Sole Use</b>	n/a	n/a	\$25,695*	\$19,260*	\$16,050*

## BEST OF THE KIMBERLEY & TIWI ISLANDS

VISIT >

10 Nights - Departs Darwin & Broome

### Coral Discoverer

Date	Departs
28 July 2025	Broome
8 August 2025	Darwin

### Rates

	Bridge Deck Stateroom	Promenade Deck Cat A	Promenade Deck Cat B	Main Deck Cat A	Main Deck Cat B
<b>Twin Share</b>	\$18,550	\$14,950	n/a	\$12,450	\$11,850
<b>Sole Use</b>	n/a	n/a	\$19,425*	n/a	n/a

Prices are per person, listed in Australian Dollars (AUD) and include GST.

An optional Mitchell Falls Helicopter Flight is available at additional cost of approximately \$695 per person (2023), bookable onboard.

Refer to website pricing at time of booking as pricing may be subject to change.

\*Limited sole use occupancy available.



King George Falls during waterfall season

# WHAT OUR GUESTS SAY:

## GUEST REVIEW



## GUEST REVIEW

*"No words can describe this magnificent voyage to do it justice. It was far beyond my expectations with outstanding experiences I shall never forget.*

*The crew and Guest Lecturers made all the excursions interesting, their enthusiasm shone through to passengers, so we were like sponges soaking up information always learning. The crew were so helpful on our landings, walks and Zodiac experiences to ensure safety. I thank you wholeheartedly for the outstanding planning to visit amazing scenery I never knew existed. Australia, our wondrous country that all Australians can discover."*

CHRISTINE, APRIL 2022



## GUEST REVIEW

*"The guides are so knowledgeable, and we learnt so much about geology, botany and aboriginal culture and history. The rock art was the best I have ever seen. We had champagne on deserted beaches at sunset and fantastic food served by lovely staff. It was the best time seeing amazing sites, with crocodiles, dugongs, turtles, and dolphins swimming past our boat. We enjoyed swimming in beautiful waterholes and after enjoying our days exploring it was nice to come back to the luxury of a lovely dinner and glass of wine."*

CHEZA, JUNE 2019

*"The meals on board were excellent and there was plenty of food to eat and alcohol to drink. Snacks and fruit were available between meals as was coffee and tea making facilities. The ship's crew were friendly, especially the captain. We were kept busy with the daily activities, which we really enjoyed. There was always something to do and you didn't get bored. Coral Expeditions ships use Xplorer boats to take you on excursions. The Xplorer boats are held in a steel cradle at the back of the ship. To enter the Xplorer, simply step from the rear deck onto the Xplorer. No need to climb into a boat being tossed around by waves.*



*My highlights of the cruise were;*

- We got to see a crocodile eating a turtle at the Lacepede Islands.
- The Horizontal falls run was a lot of fun travelling in the Zodiacs.
- At Careening Bay our marine biologist guide rescued a baby turtle which was trapped in it's nest and he set it free. We were able to watch the turtle swim away from the beach.
- At the Prince Regent River, King Cascades a crocodile came out to greet us.
- We took the helicopter flight to Mitchell Falls and went swimming there. We had great views of the falls in the air and on the ground.
- We saw aboriginal rock art as good as the rock art at Kakadu.
- The C53 Sky Trooper plane crash site was very interesting. The plane was a flying tin can, the plan's aluminium outside sheeting is very thin.
- King George River gorge and the King George Falls were spectacular. For me it's high cliff walls and coloured rock layers were more stunning than Katherine Gorge.

*On board ship we had a very nice cabin.*

*I can highly recommend the Coral Expeditions Kimberley Cruise for the sense of adventure the daily expeditions bring and for the high standard of service and comfort on the cruise."*

GUNTER, JUNE 2023

## CREW REFLECTION

### GUEST LECTURER / IAN

*"No two trips are ever the same. The same applies to human history. My Indigenous friends here on the north coast feel the same way. They are proud that finally their culture is now being presented to the outside world in a way that reflects their values and who they really are."*

## GUEST REVIEW

*"Apart from the extraordinary daily excursions to spectacular Kimberley coast attractions, the cruise on the very comfortable and well-appointed Coral Geographer was enhanced by the superb crew.*

*From dining wait personnel and kitchen members, front of house purser and assistants, cabin cleaning staff, engine and deck crew and the expert expedition leaders, the skill sets displayed and passenger engagement were exceptional.*

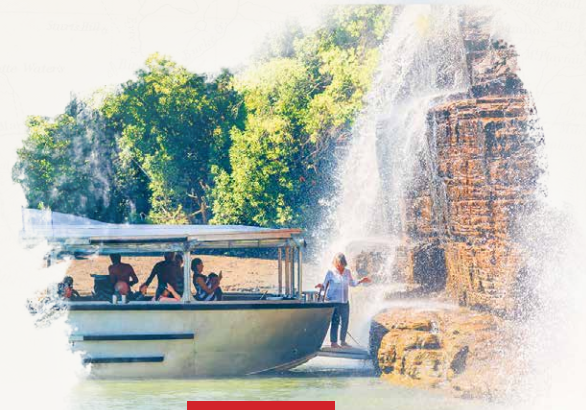
*The whole ship's accompaniment had a genuine respect for the Captain and were also more than willing to interact with passengers - not just on a professional level.*

*Our Captain stressed that safety was his prime motivator, but was also confident his crew would deliver an experience of a lifetime.*

*His promise was delivered beyond expectations, and, after 25 years in domestic tourism as a journalist, I can (without fear or favour) say I have not encountered a more friendly and professional cohort of hospitality and behind the scenes staff in my career.*

*They are all the backbone of this remarkable experience and enterprise that has given me a memorable insight into the magic of The Kimberley region of Australia. Also, the operator and crew were proudly Australasian."*

R. GIBSON, SEPTEMBER 2023



## GUEST REVIEW

*"The scenery was spectacular with the Xplorer and Zodiacs allowing us to get up close and personal with numerous shore activities on almost every day. We felt at one with nature and the history of the area."*

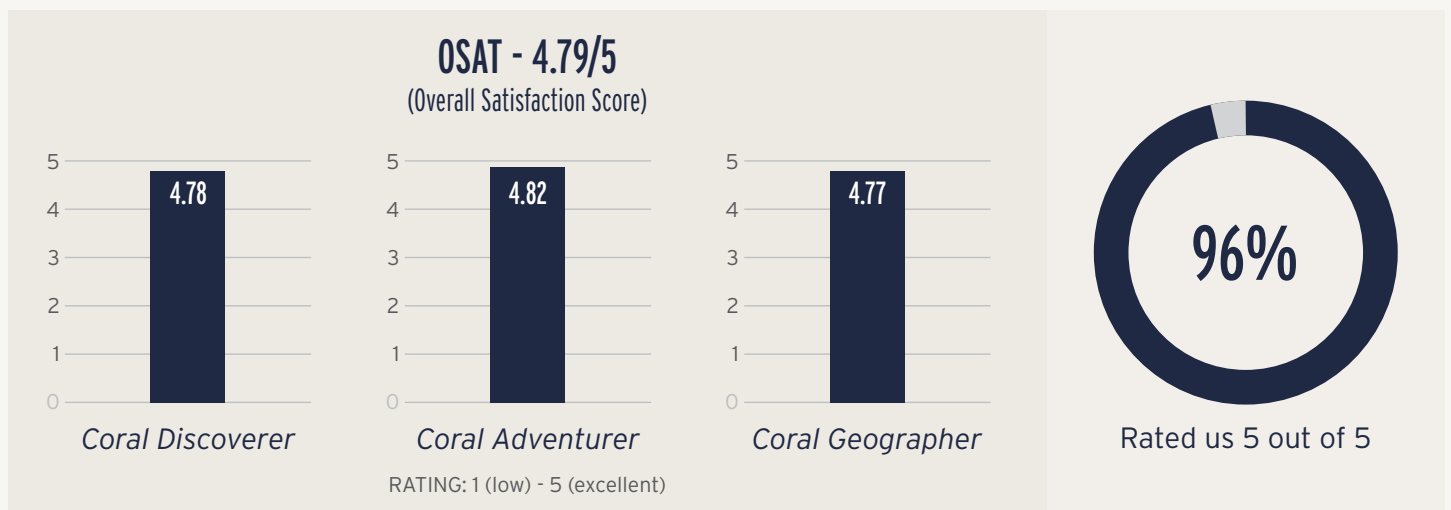
LAURIE, JULY 2022

## VOYAGE LOG: DAY 4 | WINYALKAN ISLAND

*"Everyone was having a wonderful time on the beach, with champagne and a little dancing in the sand when the most amazing spectacle occurred... a flatback sea turtle decided to join the party. The female flatback turtle seemed to be on a mission and crawled straight past the erected gazebo and up above the highest tide mark to lay her eggs. Within 20 minutes she was digging her hole to the amazed look of guests and crew, who all agreed that this was a most remarkable sight."*

## KIMBERLEY 2023 SEASON GUEST SATISFACTION

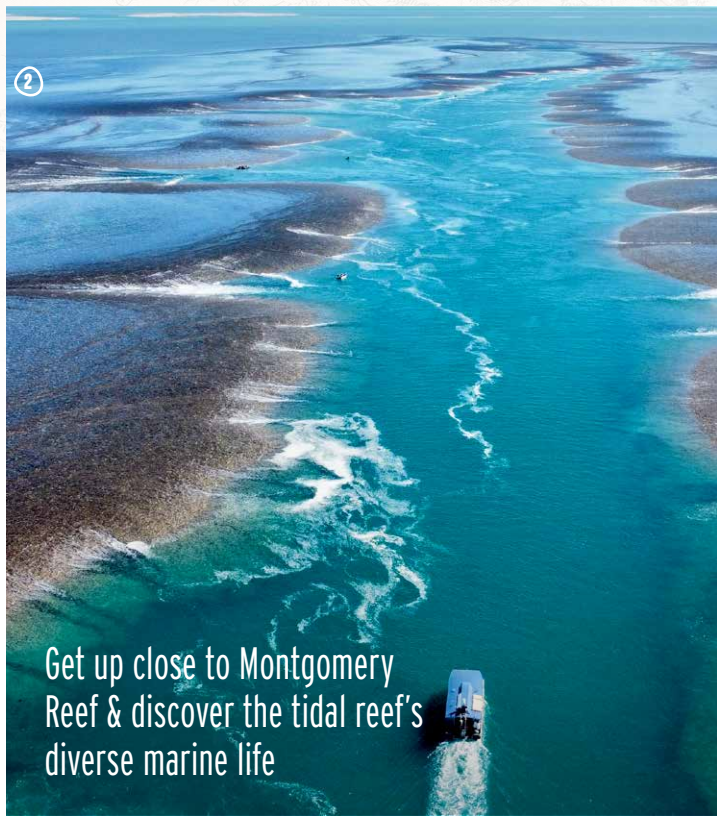
Source **TRUSTYOU™**



# AUSTRALIA'S GREATEST WILDERNESS ADVENTURE



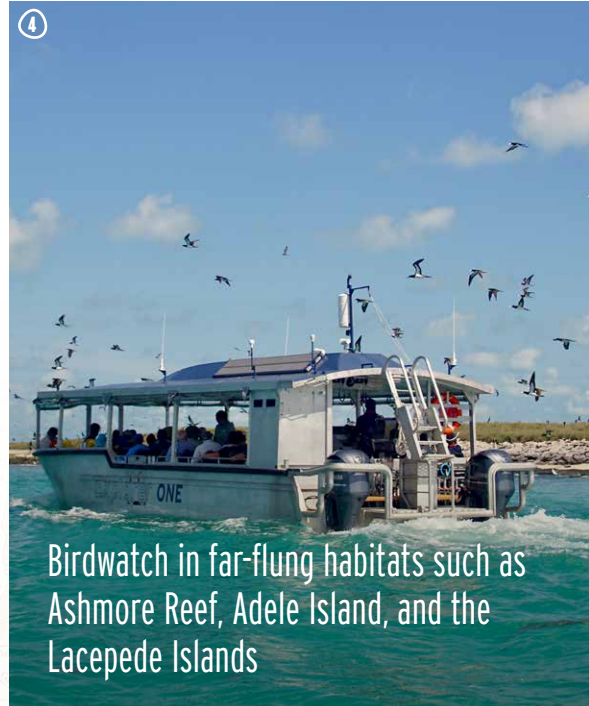
Encounter the iconic wildlife of the Kimberley region



Get up close to Montgomery Reef & discover the tidal reef's diverse marine life



See evidence of massive geological forces in the impressive rock formations



Birdwatch in far-flung habitats such as Ashmore Reef, Adele Island, and the Lacepede Islands

Our renowned Australian team of Expedition Leaders and regular Guest Lecturers have a wealth of knowledge of the unique landscapes, flora and fauna and Indigenous cultures of the Kimberley. Passionate explorers, marine biologists and naturalists, they provide on board lectures and interpretation and are always keen to chat with you and share their expertise. They will ensure your experience is as enlightening and enjoyable as possible by bringing you a new understanding and appreciation of the places you will discover on your expedition.

Join us to share their uniquely deep connection with the land, people and nature of this wilderness. Experience an enriching adventure as you relish the thrill of a zodiac ride through Horizontal Falls, shower underneath King Cascade and spot crocodiles basking on the shoreline. Here, in one of the world's most remote and beautiful regions, Indigenous peoples have recorded their connection to country through exquisite Wandjina and Gwion Gwion rock art galleries many thousands of years old. Wet and dry seasons dominate the landscape and waterfalls are at their peak in April and May after seasonal rain. Later in the season, witness the migration of Humpback Whales as they enter Kimberley waters to calve.

Find freedom in the Kimberley aboard our small ship expeditions.

# DINING EXPERIENCE

Fresh, local and delicious!



## OUR REGIONAL MENUS CHAMPION SEASONALITY

At Coral Expeditions dining is a celebration of great food and good company enjoyed in extraordinary destinations. Our approach to cuisine is about simplicity and generosity, creating dishes bursting with flavour made from fresh ingredients sourced locally and sustainably wherever possible. With only 72-120 guests onboard, our chefs can freshly prepare all meals onboard in our open galley.

There is a generous daily breakfast buffet with a regular rotation of speciality hot dishes and eggs, a set course lunch with new delights each day, and a nightly three course dinner which always includes a healthy vegetarian option. In between, our chefs will welcome you back from your shore adventures with freshly baked treats or delicious canapés to accompany your sunset pre-dinner drinks. Special diets and food allergies can be well catered for with advance notice.

Complementing lunch and dinner is our selection of boutique beers and premium wines and spirits, with a strong focus on the iconic wine growing regions of Australia and local artisan producers.

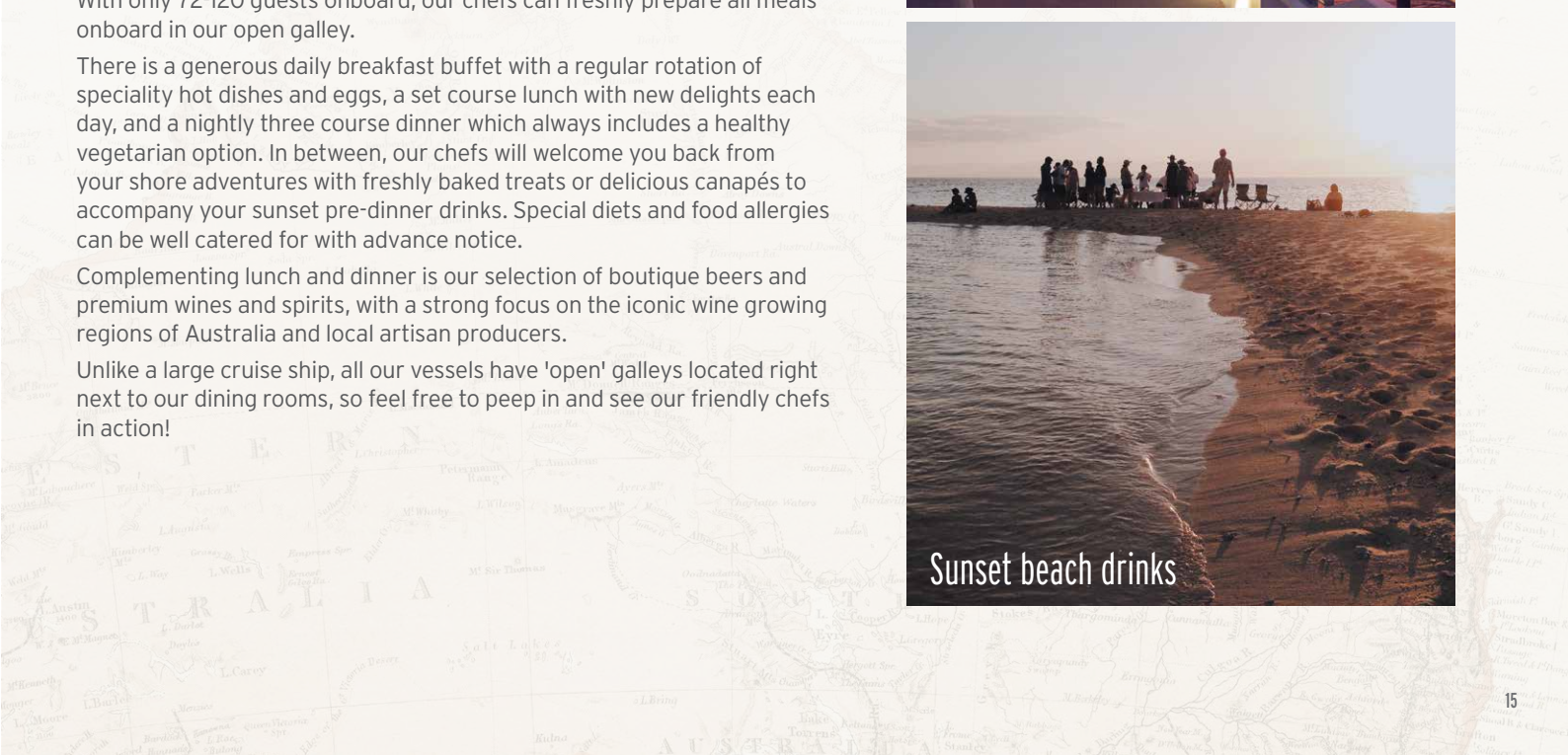
Unlike a large cruise ship, all our vessels have 'open' galleys located right next to our dining rooms, so feel free to peep in and see our friendly chefs in action!



Vista Deck Bar



Sunset beach drinks





# CORAL ADVENTURER

MAX 120 GUESTS

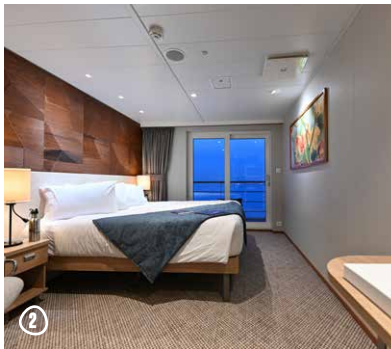
1

## Features

- 2 Xplorer tenders, 6 Zodiacs • Navigator Lounge in Bridge
- Single seat dining with wine table • Three cocktail bars
- Well-equipped gym • Passenger elevator
- Anchor-free technology

## Stateroom Categories

Bridge Deck Balcony Suites	• 55.8sqm • Private Balcony
Bridge Deck Balcony Staterooms	• 21.4sqm • Private Balcony
Explorer Deck Balcony Staterooms	• 21.4sqm • Private Balcony
Promenade Deck Staterooms	• 17sqm • Picture Window
Coral Deck Staterooms	• 17sqm • Porthole Window



2



3



# CORAL GEOGRAPHER

MAX 120 GUESTS

4

## Features

- 2 Xplorer tenders, 6 Zodiacs • Navigator Lounge in Bridge
- Single seat dining with wine table
- Three cocktail bars • Well-equipped gym
- Passenger elevator • Anchor-free technology

## Stateroom Categories

Bridge Deck Balcony Suites	• 37.5sqm • Private Balcony
Explorer Deck Balcony Staterooms	• 21.4sqm • Private Balcony
Promenade Deck Staterooms	• 17sqm • Picture Window
Coral Deck Staterooms	• 17sqm • Porthole Window



5





# CORAL DISCOVERER

MAX 72 GUESTS

6

## Features

- One Xplorer tender, 3 Zodiacs
- Open Bridge
- Single seat dining
- Three cocktail bars
- Panoramic Sun Deck
- Spacious lounge and deck areas

## Stateroom Categories

- Bridge Deck Balcony Staterooms • 20sqm • Private Balcony
- Promenade Deck Cat A Staterooms • 18sqm • Picture Window
- Promenade Deck Cat B Staterooms • 15sqm • Picture Window
- Main Deck Cat A Staterooms • 18sqm • Porthole Windows
- Main Deck Cat B Staterooms • 15sqm • Porthole Windows



7



8



9

# XPLORERS

## Features

- Xplorers on all ships are boarded directly from the ship's deck, before the hydraulic platform gently lowers into the water, making it easily accessible for all guests.
- Comfortable seating
- Onboard toilet
- Roof for shade
- Front ramp for easy walk-on/off
- Side gate for transfers to Zodiacs, snorkelling & scuba
- Open sides for fresh air & expansive views
- Clear awnings for water & wind protection
- Sound system for interpretation while on expedition
- Onboard storage to supply shore events & activities
- Drop-down life-jacket storage
- Two high-speed, long range 300HP outboard engines



10

# ZODIACS

## Features

- Inflatable Zodiacs provide another exciting and flexible option for shore excursions and navigating narrow inlets and waterways.

17

①



②



③



④



IMAGES 1 Montgomery Reef | 2 Relax in the freshwater pools of Crocodile Creek | 3 Crocodile, Porosus Creek | 4 In amongst the rocks, Bigge Island



Contact us today or speak with your travel agent.

Online [www.coralexpeditions.com](http://www.coralexpeditions.com)  
Email [explore@coralexpeditions.com](mailto:explore@coralexpeditions.com)  
Free call (Australia) 1800 079 545  
Outside Australia +61 7 4040 9999

Head office PO Box 2093 Cairns 4870 QLD Australia  
ABN 51 010 809 417



**coralexpeditions**  
AUSTRALIA'S PIONEERING CRUISE LINE

Last Updated: January 8, 2024

