

2024 -2025 VOYAGES

TASMANIA



- > Coastal Wilds of Tasmania - 10 Nights - Hobart to Hobart
- > Coastal Treks of Tasmania - 10 Nights - Hobart to Hobart
- > Circumnavigation of Tasmania - 16 Nights - Hobart to Hobart
- > Flavours of Tasmania - 8 Nights - Melbourne to Hobart
- > A Yachtsman's Cruise - 7 Nights - Sydney to Hobart



coralexpeditions
AUSTRALIA'S PIONEERING CRUISE LINE



1

WILDERNESS, WILDLIFE & CONVICT HISTORY FOR TRUE EXPLORERS



Australia's island state is poised at the edge of the world, where the Southern, Indian and Pacific Oceans collide. Here, pristine World Heritage wilderness and national parks teem with native wildlife and Tasmania's natural beauty sees rugged mountain ranges culminate in soaring coastal cliffs and crescent-shaped beaches.

Amidst this pristine, natural backdrop, Tasmania's intriguing history is displayed in compelling convict heritage and historic sites. Fertile pastures and verdant valleys produce a bounty of world-renowned food and wine, making a Tasmanian expedition cruise tantalising for all the senses.

Relax and immerse yourself in Tasmania's coastal wilds.

Voyages

- > **Coastal Wilds of Tasmania**
10 Nights | Departs Jan & Feb 2025
- > **Coastal Treks of Tasmania**
10 Nights | Departs Jan 2025
- > **Circumnavigation of Tasmania**
16 Nights | Departs Jan & Feb 2025
- > **Flavours of Tasmania**
8 Nights | Departs Dec 2024
- > **A Yachtsman's Cruise**
7 Nights | Departs Dec 2024

Expedition Note

These are expedition itineraries covering remote regions. Your Captain and Expedition Team will make changes to the daily schedule when necessary to maximise your experience. These itineraries are indicative - some variation may occur due to weather conditions, safety or local community requirements.

We recommend that you do not arrive to the embarkation port on the day of boarding or depart on the day of disembarkation due to unexpected changes that may occur in scheduling.

Australian Hospitality at Sea

On board our Australian-flagged expedition ships, discover a personalised, relaxed style of cruising. With a maximum of 120 guests, there is no need for queues or assigned seating. Instead, an intimate, convivial atmosphere shared with like-minded travellers makes you feel at home.

Our Australian and New Zealand crew share their passion for our destinations and the explorer's life. Join our engine room tours, watch our chefs at work in the open galley, and chat with our Captain or officers on the bridge - they will be delighted to have your company.

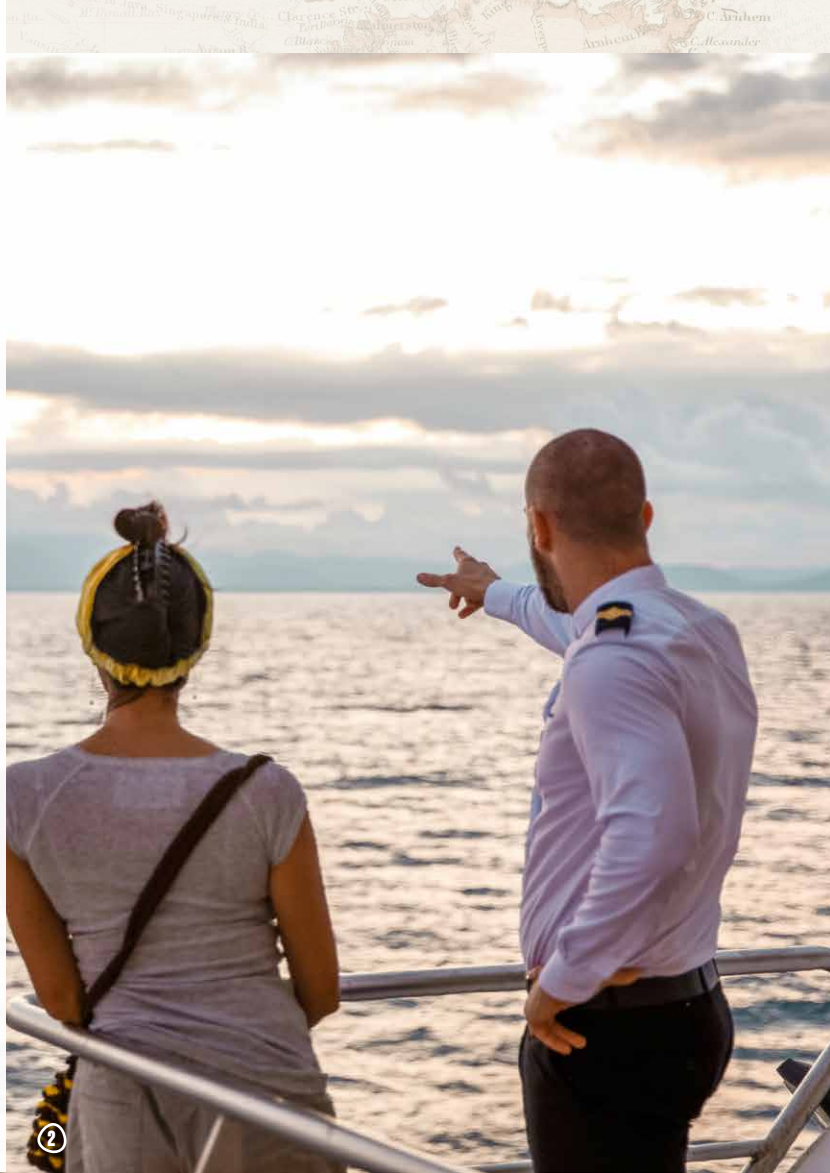
Our chefs, inspired by destination flavours, prepare cuisine from fresh regional produce. Our wine cellars hold a curated selection of wines and unique beers from Australia and New Zealand.

Our guests love to mingle over drinks as the sun sets, enjoy daily educational presentations by our lecturers, participate in stargazing sessions after dark, or simply find a quiet corner on deck and enjoy the solitude.

The Expedition Experience

We explore remote locations that are hard to reach or not often touched by tourists, with shore excursions providing environmental and cultural appreciation. Our small group sizes ensure your experience is personal, with minimal impact on the communities and environments we visit.

Enjoy excursions or activities each day, guided by expert Expedition Leaders and lecturers who provide commentary on culture, history, and the region's unique geology, plants and wildlife to help you connect with these special places.

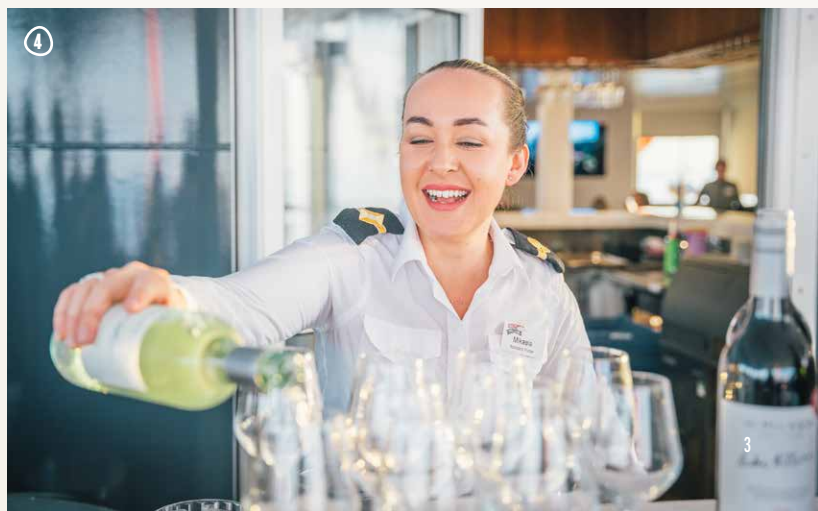


Why Choose Coral Expeditions

There are many reasons why our guests return to Coral Expeditions. Ours is a true and authentic expedition experience.

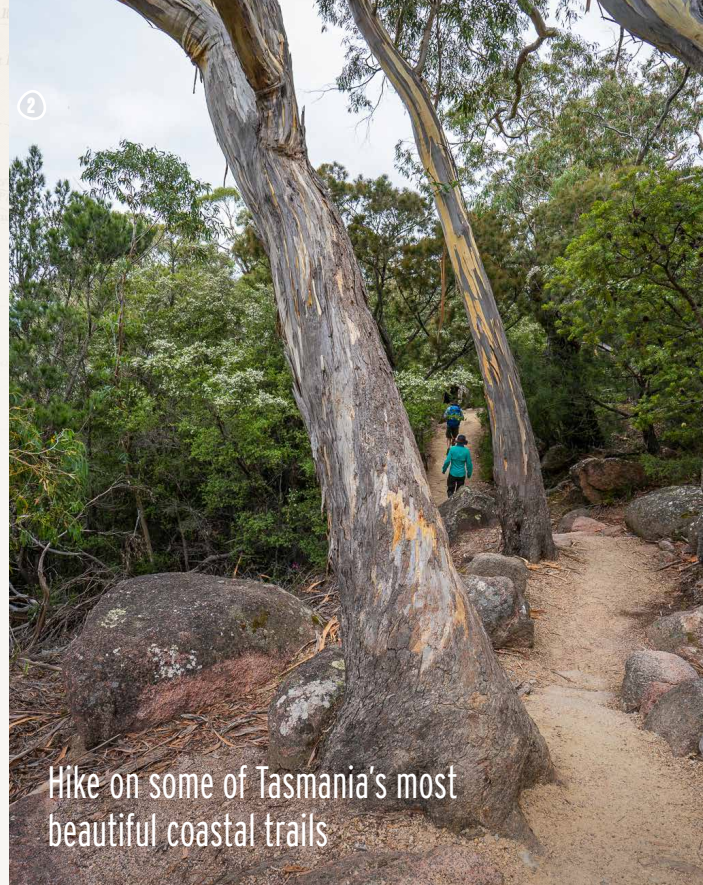
Our fleet of three specialised expedition ships and tenders take guests to some of the most beautiful, yet undiscovered islands and coastal regions of the world. Our explorer guests are attracted by our relaxed small ship atmosphere and itineraries that larger ships cannot replicate.

At a time when the cruise industry is moving to larger and less personal ships with more gimmicks, we have purposefully limited the size of our ships to maximise the expedition experience. Our cuisine is prepared in small batches from our onboard galley using quality Australian produce and wine. We operate to high Australian standards of safety with qualified Australian crew wherever we go. We were the first to offer interpretive programs reflective of the destinations we visit and to employ Expedition Leaders, Guest Lecturers, Marine Biologists, and SCUBA Instructors - a tradition that continues today.





Spot wildlife such as pademelons, wombats, and even the rare orange-bellied parrot



Hike on some of Tasmania's most beautiful coastal trails



Spend time on one of Australia's best beaches - Wineglass Bay



Discover Tasmania's convict history at Maria Island & Port Arthur

Our Australian team of Expedition Leaders and regular guest lecturers, many of whom call Tasmania home, have a wealth of knowledge of the unique landscapes, flora and fauna and Indigenous cultures. Passionate explorers, marine biologists and naturalists, they provide on board lectures and interpretation and are always keen to chat with you and share their expertise. They will ensure your experience is as enlightening and enjoyable as possible by bringing you a new understanding and appreciation of the places you will discover on your expedition.

An immersive voyage into the wilderness, these voyages showcase Tasmania's rugged coastal beauty. Be surrounded by Tasmania's breathtaking National Parks; from the perfect circular formation of Wineglass Bay, to the otherworldly remoteness of Port Davey and the wildlife refuge of Maria Island. Along the way, indulge in authentic food experiences. Shaped by a climate straddling the Roaring Forties latitudes, Tasmania's verdant valleys and rolling hills are clad in fertile pastures, vineyards and orchards bathed in crisp clean air and warm summer sunshine. Emerging from cellar doors and farm gates are award-winning cheeses, premium wines, craft beers and artisanal spirits inspired by Tasmania's simple but elegant natural treasures.

Find freedom in Australia's island state aboard our small ship expeditions.



Enjoy wine-tastings of
Tasmanian wines onboard



Explore the isolated Southwest
Wilderness at Port Davey & Melaleuca



CUISINE & WINE

On board you will discover a personal and relaxed atmosphere befitting our Australian heritage. We do not have formal nights, organised entertainment or designated seating. Instead, you will enjoy a convivial atmosphere shared with like-minded explorers, with our experienced and friendly crew always at hand.

Enjoy freshly prepared meals from the open galley featuring local ingredients from the regions we visit. Relax in the spacious and open atmosphere of our indoor and outdoor bars and dining areas. Enjoy craft beers, artisanal spirits and wines sourced from the Australia and New Zealand's finest terroirs at the end of a long day ashore.

WINE SELECTIONS

We offer two wine packages, which guests may purchase in addition to our house selection, that feature hand-selected Australian wines and French champagne.

- > **A Taste of Australia Selection:** Six bottles featuring Australian wines - three Reds, two Whites and a Rosé.
- > **Connoisseur Selection:** Six bottles featuring two Whites, three Reds and French Champagne

[FIND OUT MORE >](#)

INCLUSIONS

- > All excursions with our Expedition Team
- > Use of Xplorer, Zodiacs and Kayaks
- > Daily lectures and briefings with Guest Lecturers
- > All meals, chef-prepared on board
- > Captain's welcome and farewell events, and open bridge access
- > Selected wines, selected beers and house spirits, juices, and soft drinks served with lunch and dinner
- > 24-hour barista-style coffee and tea station
- > All entrance fees to National Parks, ports, traditional owner fees and charges imposed by governing authorities
- > Tips and gratuities
- > Use of all onboard facilities, incl. a reference library
- > Your expedition photos captured during the voyage
- > Post-cruise transfers

IMAGES 1 Chefs at work, credit David Kirkland | 2 Dinner served onboard | 3 Sunset drinks on the Deck

COASTAL WILDS OF TASMANIA

HOBART > HOBART

10 NIGHTS | JANUARY & FEBRUARY 2025

1

Expedition Highlights

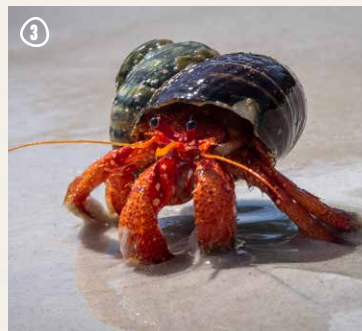
- > Spend two days exploring Port Davey and Bathurst Harbour, with kayaking, bird-watching and hiking revealing the secrets of this stunning wilderness
- > Explore the beautiful Freycinet National Park. Stroll the sweeping white sand of Wineglass Bay and hike to the lookout for a spectacular view
- > Visit the Noah's Ark of Tasmania, Maria Island, and spot wombat, wallabies, endemic birds and other wildlife
- > From the sea, have a breath-taking view of the 300 metre high dolerite columns of the Tasman Peninsula, the highest sea cliffs in the southern hemisphere
- > Hike the Fluted Cape Track at Bruny Island
- > Kayak from the back of the ship at Fortescue Bay
- > Taste Tasmania's remarkable fresh produce, cool-climate wines and artisanal spirits throughout your expedition and at special wine-tastings and events

See Page 14 for Departures & Fares

[VIEW AVAILABILITY & BOOK ONLINE >](#)



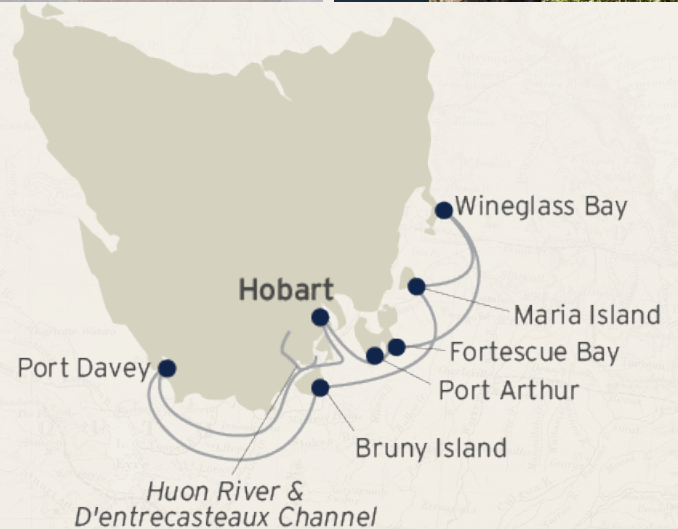
2



3



4



ITINERARY: 10 NIGHTS > HOBART TO HOBART

DAY 1: DEPART HOBART

Complete SailSAFE check in at 3:00 pm. Board *Coral Discoverer* at 4:00pm for a 5:00pm departure.

DAYS 2-10:

No two Coral Expeditions Tasmania voyages are the same. Throughout the expedition, allowances may be made for seasonal variations, weather, tidal conditions and any other event that may affect the operation of the vessel. Below are the key destinations we visit.

D'ENTRECASTEAUX CHANNEL & HUON RIVER

The sheltered waters of the Huon River allow us to visit the Wooden Boat Centre at Franklin where Tasmania's maritime heritage is kept alive through the production of hand-crafted timber boats.

Grandveve Cheeses is an organic sheep dairy farm there will be time to learn about the cheesemaking process as well as taste their 'ewenique' sheep's whey vodka at the Cellar Door overlooking D'Entrecasteaux Channel.

PORT DAVEY & BATHURST HARBOUR

On the edge of the world in southwest Tasmania, the landscape here is about as wild as it gets. Raw, craggy-peaked mountains and drowned river valleys. Wild rivers and rivulets carved by an eternity. Where tannin-rich freshwater sits atop saltwater, tinting the ocean the colour of tea. With no road access, the logical way to explore this wilderness is by small expedition ship.

Sheltered from Roaring Forties winds that buffet this coast is the protected haven of Port Davey and Bathurst Harbour. A marine reserve and part of the Tasmanian Wilderness World Heritage Area, we spend two whole days (weather permitting) enjoying this rare opportunity to hike, kayak and take in this pristine natural environment. We explore by Xplorer tender vessels and learn about intrepid European explorers and Indigenous Australians, who once walked this land and keep a lookout for the rare and endangered Orange Bellied Parrot amongst other wildlife..

BRUNY ISLAND & ADVENTURE BAY

At Adventure Bay on the east coast of Bruny Island, hike along the dramatic coastal cliffs of Fluted Cape and spot the endemic Bennett's Wallaby. Cruising the base of the near-vertical dolerite cliffs in Xplorer, take a closer look at Penguin Island, which is connected to Fluted Cape at low tide. Learn about how southern right whales were almost hunted to extinction when Adventure Bay housed four whaling stations before the industry's decline in the mid-1840s. The ruins can be seen on a walk to Grass Point.

MARIA ISLAND NATIONAL PARK

Maria Island can be referred to as a Noah's Ark for native Tasmanian species. The Maria Island National Park provides an ideal sanctuary, and is one of the best places in Australia to observe endemic birdlife as well as wombats, Cape Barren geese, Forester Kangaroos, Bennett's Wallabies and pademelons.

Stroll amongst the ruins and restored buildings of the Darlington convict settlement and take a walk to the striking formations of the Painted Cliffs, where rich iron deposits have stained the sandstone cliffs with coloured streaks of red, purple and orange. With ample time at Maria Island, we also have the opportunity to do the Fossil Cliffs walk and the Reservoir circuit.

FREYCINET NATIONAL PARK & SCHOUTEN ISLAND

The Freycinet Peninsula is a dramatic headland dominated by a pink-hued granite mountain range called the Hazards. Blessed with picturesque sweeping bays and white sand beaches like Wineglass Bay, much of the peninsula is part of the Freycinet National Park.

Join a guided hike along the Isthmus Track and be rewarded with magnificent views from the lookout, or swim and kayak the azure waters of Wineglass Bay. Cruising close to Schouten Island, keep an eye out for large colonies of fur seals sunning themselves on the rocks.

TASMAN NATIONAL PARK & FORTESCUE BAY

The Tasman Peninsula is known for its geological formations like the Tessellated Pavement, Tasman Arch, and the soaring 300 metre high dolerite sea cliffs of Cape Raoul, Cape Pillar and Cape Hauy - the tallest in the southern hemisphere. Watch fur seals hauling out on the rocks, as well as playful dolphins and soaring albatross. Visit Fortescue Bay and hike sections of the Three Capes Trek to Cape Itauy, or take a scenic Xplorer cruise of the rugged coastline and kayak in Canoe Bay.

PORT ARTHUR HISTORIC SITE

One of Australia's most significant historic places, the UNESCO World Heritage-listed Port Arthur ruins stand sentinel on the Tasman Peninsula south of the narrow isthmus of Eaglehawk Neck. For more than 40 years, the Port Arthur penal colony housed convicts sentenced to hard labour before its heavy iron doors clanked shut permanently in 1877.

Port Arthur has over 30 ruins and restored homes set in 100 acres of landscaped grounds. In the company of Port Arthur's knowledgeable guides, join a tour of this site.

DAY 11: ARRIVE HOBART

Disembark in Hobart at 8:00am

Post cruise transfers to CBD hotels or the airport are included.

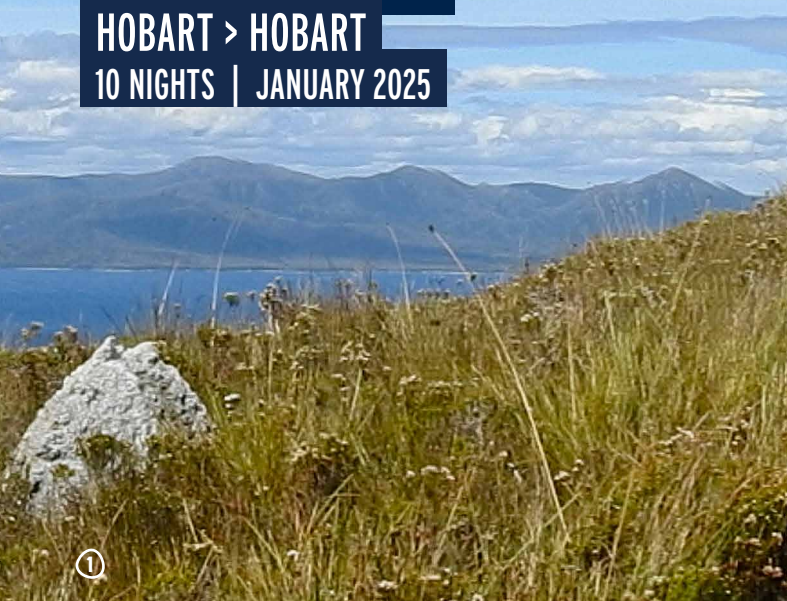


[VIEW AVAILABILITY & BOOK ONLINE >](#)

COASTAL TREKS OF TASMANIA

HOBART > HOBART

10 NIGHTS | JANUARY 2025



①

Highlight Hikes of your Expedition

Mt Beattie Walk, Port Davey

- > 3 hours return
- > Grade 2/3 walk - some bushwalking experience recommended.

Mt Milner Walk, Port Davey

- > 1 hour return
- > Grade 2/3 walk - some bushwalking experience recommended.

Fluted Cape Walk, Bruny Island

- > 2.5 hours return (5.4km circuit)
- > Grade 4 walk - bushwalking experience recommended.

Wineglass Bay Walk, Freycinet National Park

- > 1 - 1.5 hours return (3 km return)
- > Grade 3 walk - steep uphill climb with rough steps.

Bishop & Clerk Walk, Maria Island

- > 5 hours return (12 km return)
- > Grade 4 walk - bushwalking experience recommended.

Cape Huay Walk, Tasman Peninsula

- > 4 hours return (4.4 km one way)
- > Grade 3 walk - some bushwalking experience recommended.

See Page 14 for Departures & Fares

[VIEW AVAILABILITY & BOOK ONLINE >](#)



②



③



④



ITINERARY: 10 NIGHTS > HOBART TO HOBART

DAY 1: DEPART HOBART

Complete SailSAFE check in at 3:00 pm.

Board *Coral Discoverer* at 4:00pm for a 5:00pm departure.

DAYS 2-10:

No two Coral Expeditions Tasmania voyages are the same.

Throughout the expedition, allowances may be made for seasonal variations, weather, tidal conditions and any other event that may affect the operation of the vessel. Below are the key destinations we visit.

PORT DAVEY- MOUNT BEATTIE | MOUNT MILNER

On the edge of the world in southwest Tasmania, the landscape here is about as wild as it gets. Raw, craggy-peaked mountains and drowned river valleys. Wild rivers and rivulets carved by an eternity. Where tannin-rich freshwater sits atop saltwater, tinting the ocean the colour of tea. With no road access, the logical way to explore this wilderness is by small expedition ship.

Guests will have the option of:

Mount Beattie - 256m above sea level - The Mt Beattie track starts from a jetty at Claytons Corner where the historic. Claytons Hut is located, it travels steady uphill through native forest then opens out to button grass, open windy areas which are often muddy on the trail to the summit. It offers stunning views of the whole Port Davey area in particular Bathurst Harbour.

Mount Milner - 180m above sea level - This hike begins with getting your feet wet in the shallow bay, the hike begins by slowly gaining height before reaching a short but very steep section which quickly gains height before leveling off and an easy up and down section to the lookout over the Break Sea Islands.

BRUNY ISLAND - FLUTED CAPE WALKWAY

At Adventure Bay on the east coast of Bruny Island, we walk along the dramatic coastal cliffs of Fluted Cape and hope to see Bennett's Wallabies which are endemic to Bruny Island. Learn about the rich maritime history of Adventure Bay, and explore the history of old whaling stations on the way to Grassy Point.

Fluted Cape Walkway - 240m above sea level - This is a moderately challenging track which has a very well-maintained loop track with several short steep sections, and gradual inclines. It begins at the beach and is a flat easy walk to grassy point (1.5km) where the steep uphill section begins, it levels off at the lookout sections (1.5km) and then traverses down through the forest area, this can be slippery and muddy if rainfall has occurred.

PORT ARTHUR HISTORIC SITE

One of Australia's most significant historic places, the UNESCO World Heritage-listed Port Arthur ruins stand sentinel on the Tasman Peninsula south of the narrow isthmus of Eaglehawk Neck. For more than 40 years the Port Arthur penal colony housed British and Australian convicts sentenced to hard labour before its heavy iron doors clanked shut for the last time in 1877.

Today, the Historic Site has over 30 buildings, ruins and restored period homes set in 100 acres of landscaped grounds. In the company of Port Arthur's knowledgeable guides, join a tour of this site.

FORTESCUE BAY | CANOE BAY TO BIVOUC BAY

Guests will have the option of:

Cape Huay (part of the Three Capes Walk) - 180m above sea level elevation gain - It features many steps along the way over 1000 on the way down and 800 to the junction lookout - good fitness and balance required. It starts from the boat ramp and undulates through woodlands and heath; it then drops down a steep set of steps before ascending to the Cape.

Canoe Bay to Bivouac Bay - Stroll along the shoreline looking for local wildlife as we beachcomb from Canoe to Bivouac Bay.

FREYCINET NATIONAL PARK - HAZARDS LOOP | ISTHMUS TRAIL | WINEGLASS BAY LOOKOUT

The Freycinet Peninsula is a dramatic headland dominated by a pink-hued granite mountain range called the Hazards. Blessed with picturesque sweeping bays and white sand beaches like Wineglass Bay, much of the peninsula is part of the Freycinet National Park.

Guests will have the option of:

Hazard Loop - 204m elevation - From Wineglass Bay across the Isthmus track and walk down Hazards Beach before joining onto the Hazards track looping onto the start of the Wineglass Bay lookout walk from Coles Bay.

Isthmus Trail - An easy flattish walk that undulates between Hazards Beach and Wineglass Bay on a well-formed trail can be walked either way. It features both sand and dirt tracks as well as a selection of boardwalks.

Wineglass Bay Lookout - 204m elevation - One of Tasmania's celebrated walks, it is a very well-constructed walkway passing through the coastal woodland and striking granite boulders to the lookout. It is a steep uphill climb featuring many individual steps (more than 500) before reaching the lookout summit, as we cannot land on the Coles Bay side this is a return from Wineglass Bay.

MARIA ISLAND - BISHOP AND CLERK | FOSSIL CLIFFS LOOP | PAINTED CLIFFS

Maria Island can be referred to as a Noah's Ark for native Tasmanian species. The Maria Island National Park provides an ideal sanctuary, and is one of the best places in Australia to observe endemic birdlife as well as wombats, Cape Barren geese, Forester Kangaroos, Bennett's Wallabies and pademelons.

Guests will have the option of:

Bishop and Clerk - 620m above sea level, this hike climbs through grasslands, open forests, tall woodland, to rocky slopes towering dolomite columns of the summit. It involves steep up and down sections, and an extensive field of boulders with a short climb to the summit.

Fossil Cliffs Loop - 54m elevation - This is a loop walk starting at the jetty and finishing at the Darlington Settlement. It follows gentle but uneven grass areas and well-maintained tracks it is mostly gentle ups and downs but does feature one steep hill climb. It visits the old buildings and the fossil cliffs where fossils were deposited some 300 million years ago.

Painted Cliffs - 56m elevation - A relaxing loop return coastal walk that features the stunning painted cliffs at Hopground beach, best done on a low tide to allow safe access to the rock platform beneath the cliffs.

DAY 11: ARRIVE HOBART

Disembark in Hobart at 8:00am. A post-cruise transfer from the ship to Hobart city or airport is included.

This hiking-themed itinerary takes you to explore remote coastlines of Tasmania's east coast with hikes on Tasmania's iconic coastal walking tracks.

Following a similar itinerary as our Coastal Wilds of Tasmania voyage, our Coastal Treks departures have a focus on longer, more challenging hikes, for a uniquely Australian back-to-nature experience.

[VIEW AVAILABILITY & BOOK ONLINE >](#)

CIRCUMNAVIGATION OF TASMANIA

HOBART > HOBART

16 NIGHTS | JANUARY & FEBRUARY 2025



1

Expedition Highlights

- > Visit remote Flinders Island - experience one of Tasmania's 'Great Short Walks' in Strzelecki National Park
- > Cruise the scenic Tamar River to Launceston, and enjoy a visit to the Josef Chromy Vineyard
- > Gaze in awe at the 300m high sea cliffs at Tasman National Park - the highest in the southern hemisphere
- > Encounter iconic wildlife such as wombats, fur seals, and dolphins
- > Spend two to three days exploring in the World Heritage Area of Port Davey and Bathurst Harbour
- > Kayak and hike Tasmania's breathtakingly beautiful coast and visit remote areas all around the island
- > Journey Tasmania's isolated and mysterious West Coast
- > See the coast of Tasmania from the sea, an unusual perspective highlighting the awe-inspiring beauty of the island

See Page 14 for Departures & Fares



[VIEW AVAILABILITY & BOOK ONLINE >](#)

ITINERARY: 16 NIGHTS > HOBART TO HOBART

DAY 1: DEPART HOBART

Complete SailSAFE check in at 3:00 pm.
Board *Coral Discoverer* at 4:00pm for a 5:00pm departure.

DAYS 2-16: *No two Tasmania cruises will be the same. Your Expedition Team and Master will craft each expedition to suit the prevailing weather conditions and maximise your experience of the Tasmanian coast. If some destinations are not accessible due to seasonal variations, weather, or tidal conditions, alternatives will be selected from the below and other destinations. Please note the order of the below itinerary is subject to change.*

MARIA ISLAND

The historic ruins and rugged cliffs of Maria Island National Park are home to diverse wildlife that includes Forester Kangaroos, Bennetts wallabies, and wombats. Walk to historic Darlington Settlement, explore the ancient seabeds of the Fossil Cliffs, and marvel at the sandstone formations of the Painted Cliffs.

FREYCINET PENINSULA & WINEGLASS BAY

At Freycinet Peninsula, see the pink granite formations of the Hazard Mountains, and the sweeping bays fringed by eucalypts. Join a guided hike to the Wineglass Bay beach - one of the best beaches in the world. Witness fur seals lounging on the rocks at the Ile des Phoques.

FLINDERS ISLAND & THE FURNEAUX GROUP

Visit wild and rugged Flinders Island, and marvel at the pink and gray granite mountain ranges of Strzelecki National Park. Land at beautiful Trousers Point beach, with the possibility of enjoying two of Tasmania's Great Short Walks at Trousers Point and Castle Rock. Visit seaside townships, discover the sad history of Wybalenna Settlement, and see relics of Flinders maritime past at the Furneaux Museum.

KENT ISLAND GROUP

Weather permitting we visit the Kent Group of islands, Tasmania's northernmost National Park and a marine protected area. These islands are the remains of a land bridge that once connected Tasmania with main land Australia over 10,000 years ago. The waters of Kent Island are crystal clear, with the highest diversity of fish species in Australia. On Deal Island we find the highest lighthouse in Australia, standing 305 metres above sea level, which is manned by volunteer caretakers, enjoy several walk options and swim and kayak off the beach.

TAMAR RIVER & LAUNCESTON

Spend two days cruising the scenic Tamar River - which despite its name is actually a tidal estuary over its entire length. Formed by the confluence of the North and South Esk rivers at Launceston, the river's banks are peppered with scenic reserves, historical properties and notable vineyards. Explore the historic pilot station at Low Head, discover the charming city of Launceston, and enjoy our signature food & wine event at Josef Chromy Vineyard.

STANLEY & THREE HUMMOCK ISLAND

On our visit to Stanley, walk to see 'The Nut' - an old volcanic plug that measures approximately 4.6km with a steep section that flattens to form the top. You can opt for a chairlift to skip the incline. Either way, be rewarded with coastal views before heading to explore Highfield Historic Site.

WEST COAST CRUISING

Home to striking mountain ranges, ancient pines and untamed rivers, the wild west coast is the heart of Tasmania's wilderness and a true frontier. Take in the dramatic scenery during a day of cruising.

PORT DAVEY

A marine reserve and part of the Tasmanian Wilderness World Heritage Area, Port Davey is truly spectacular. Enjoy the unforgettable experience of kayaking in Bramble Cove, and explore Melaleuca, along with hiking and bird-watching. We will spend 2-3 days here, and upon departure we will cruise past the remote south coast islands of Maatsuyker, home to Australia's most southerly lighthouse.

D'ENTRECASTEAUX CHANNEL & HUON RIVER

Cruise the Huon River and visit the township of Franklin and its fascinating Wooden Boat Centre. Learn about the process of sheep

cheese-making at the family-run Grandvewe Cheeses, and at the cellar door enjoy a taste of their 'ewenique' sheep's whey vodka. Visit Art Farm at Birches Bay for a walk enjoying their fine collection of sculptures.

ADVENTURE BAY, BRUNY ISLAND

Experience the rugged beauty of Fluted Cape as you walk along the sheer coastal cliffs. Learn about the rich maritime history of Adventure Bay, and explore the history of old whaling stations on the way to Grassy Point.

TASMAN PENINSULA & PORT ARTHUR

One of Australia's most significant historic places, the UNESCO World Heritage-listed Port Arthur ruins stand sentinel on the Tasman Peninsula south of the narrow isthmus of Eaglehawk Neck. Today, the Historic Site has over 30 buildings, ruins and restored period homes set in 100 acres of landscaped grounds.

DAY 17: ARRIVE HOBART

Disembark in Hobart at 8:00am. A post cruise transfer to CBD hotels or airport is included.



FLAVOURS OF TASMANIA

MELBOURNE > HOBART

8 NIGHTS | DECEMBER 2024



①

Expedition Highlights

- > Explore the Tamar Valley Truffle Farm alongside Marcus Jessup and his family. Learn about their production story, Truffle farming techniques and indulge in tastings from their range of products.
- > Savor fresh local produce platters and wine tastings on the deck of Freycinet Lodge, overlooking the breathtaking views of the five stunning pink granite Hazards peaks and azure waters of Coles Bay, within the iconic Freycinet National Park.
- > Perched atop a hill with panoramic 360-degree views, Daniel and Ella from Premaydena Hill Winery and Black Angus Beef present their locally sourced produce. Delight in wine tastings as you learn about their journey to become Tasmanian beef farmers and vineyard growers.
- > Experience a Signature Dinner Event hosted by Matt Dunbabin from Bangor Wines. Delve into the rich history of the Dunbabin family farm, spanning seven generations. Enjoy guided winery and vineyard tours, tantalizing tastings, and a delectable three-course dinner.
- > Savor lunch accompanied by live music at The Kiln, nestled in a picturesque setting within a historic building. Witness local producers showcasing their specialties with tasting displays.
- > Specialist Tasmanian Producers: Jane Bennett - Cheese Making Management, Wasabi Industry Establishment, Gerald Ellis - Winemaker, Meadowbank Wines, Peter Bignal - Distillery Owner, Belgrove Distillery and Maan Mazen - Olive Oil Judge, Royal Hobart Show.

See Page 14 for Departures & Fares



②



③



[VIEW AVAILABILITY & BOOK ONLINE >](#)

IMAGES 1 Enjoy a vineyard tour, Bangor Winery | 2 Gain insight into truffle farming at Tamar Valley Truffle Farm | 3 Visit Huon Valley's Wooden Boat Centre | 4 Sample local produce at Freycinet Lodge | 5 Immerse yourself in the natural beauty of Flinders Island's diverse landscapes and wildlife.

ITINERARY: 10 NIGHTS > HOBART TO HOBART

DAY 1: DEPART HOBART

Arrive at Melbourne Harbour Station Pier (berth to be advised) at 4:00pm, where there is time to settle into your stateroom before our 5:00pm departure.

Take the time to become acquainted with all the facilities onboard *Coral Adventurer*. Gather in the Bridge Deck lounge for a safety briefing and presentations by lecturers and expedition staff. As dusk falls, mingle with your fellow travellers, the Captain and crew for the Captain's Welcome Drinks.

DAYS 2-9:

No two Coral Expeditions Tasmania voyages are the same. Throughout the expedition, allowances may be made for seasonal variations, weather, tidal conditions and any other event that may affect the operation of the vessel. Below are the key destinations we visit.

CROSSING BASS STRAIT

Immerse yourself in a series of onboard experiences as we cross the Bass Strait named after George Bass, who, alongside Matthew Flinders, sailed across it while circumnavigating Van Diemen's Land (now named Tasmania) in the Norfolk in 1798-99. Join us later this evening for the Captain's Welcome Drinks, featuring an exquisite selection of Tasmanian Beers and Wines, as we toast to the beginning of our adventure together.

LAUNCESTON

Visit the picturesque Tamar Valley Truffle Farm, home to one of the world's top 10 winery routes, and meet Marcus Jessup and gain insight into truffle farming, accompanied by tastings. Explore the world-class Marions Winery with Marion Semmens, enjoying a guided vineyard and winery tour followed by tastings. Conclude the day with a picnic lunch overlooking the Tamar Valley, selecting from a variety of locally sourced options.

FLINDERS ISLAND

Explore Unavale Winery, where you'll indulge in a wine tasting experience. Then, delve into local history at the Furneaux Museum, gaining insights into the rich heritage of the region. Then, enjoy a scenic stroll along the Trousers Point track, immersing yourself in the natural beauty of Flinders Island. Conclude your day with a bus tour, offering a panoramic view of Flinders Island's diverse landscapes and abundant wildlife.

FREYCINET

At Freycinet Peninsula, see the pink granite formations of the Hazard Mountains, and the sweeping bays fringed by Eucalypts. Embark on a guided hike to Wineglass Bay beach, where you can enjoy a refreshing swim and indulge in birdwatching amidst the local flora and fauna. Conclude your day with a local produce and wine tasting on the balcony of Freycinet Lodge, where you can savor delicious flavors while soaking in the breathtaking coastal views of Coles Bay.

TASMAN PENINSULA

Indulge in a tasting and tours of McHenry's Distillery, where Bill McHenry himself will guide you through the distillery process and share the secrets of gin making. Continue your journey with tastings and tours at Premaydena Winery and Black Angus Beef Farm, where you'll savor the flavors of premium wines and succulent beef amidst picturesque surroundings. Discover the unique landscapes and flora of Tasman Peninsula as you explore Port Arthur Lavender, Tessellated Pavement and the Devil's Arch. Conclude your day with a memorable Signature Dinner Event at Bangor Winery, where you'll have the pleasure of meeting Matt Dunbabin and learning about the farm's rich history. Enjoy wine tastings and vineyard tours before indulging in dinner featuring the finest Tasmanian produce.

SOUTHERN CRUISE

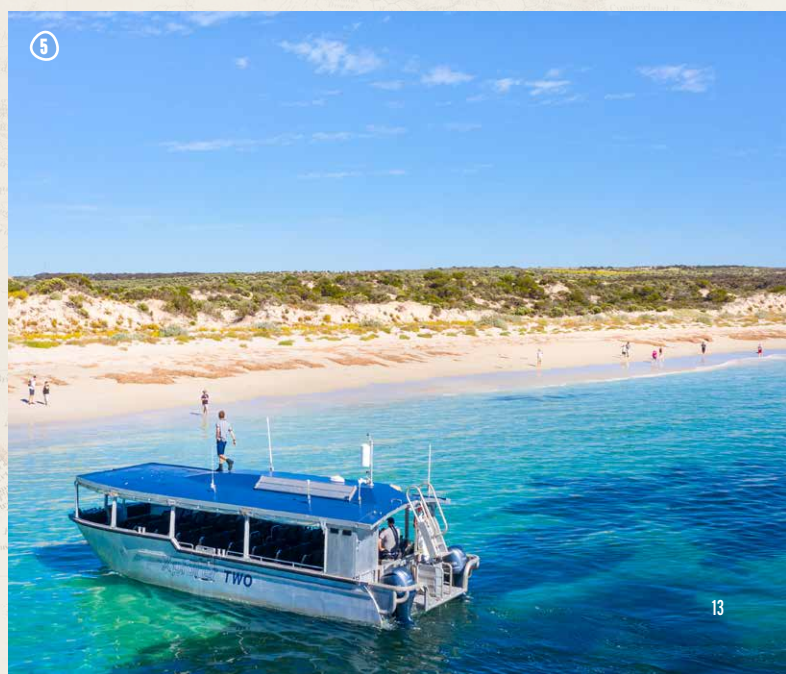
Cruise down the D'Entrecasteaux Channel towards South Cape accompanied by specialist Tasmanian producers showcasing their specialties on board including a whiskey maker, wine maker, and cheese expert, providing insights into their craft and tastings of their cuisine. In Recherche Bay, immerse yourself in nature with a scenic stroll along the Fisher Point Walk, taking in the local flora and fauna. Enjoy an optional walk to the bronze whale statue at Cockle Creek.

HUON VALLEY

Journey along the Huon River, where you'll explore the charming township of Franklin and its renowned Wooden Boat Centre, offering insight into Tasmania's maritime heritage. Indulge in our final signature event of the voyage, an exclusive culinary experience at The Kiln, featuring displays by local producers, a lunch showcasing Tasmanian delights, and live music performed by a talented local band, celebrating the new friends and memories we've created on the final expedition day of the voyage.

DAY 9: ARRIVE HOBART

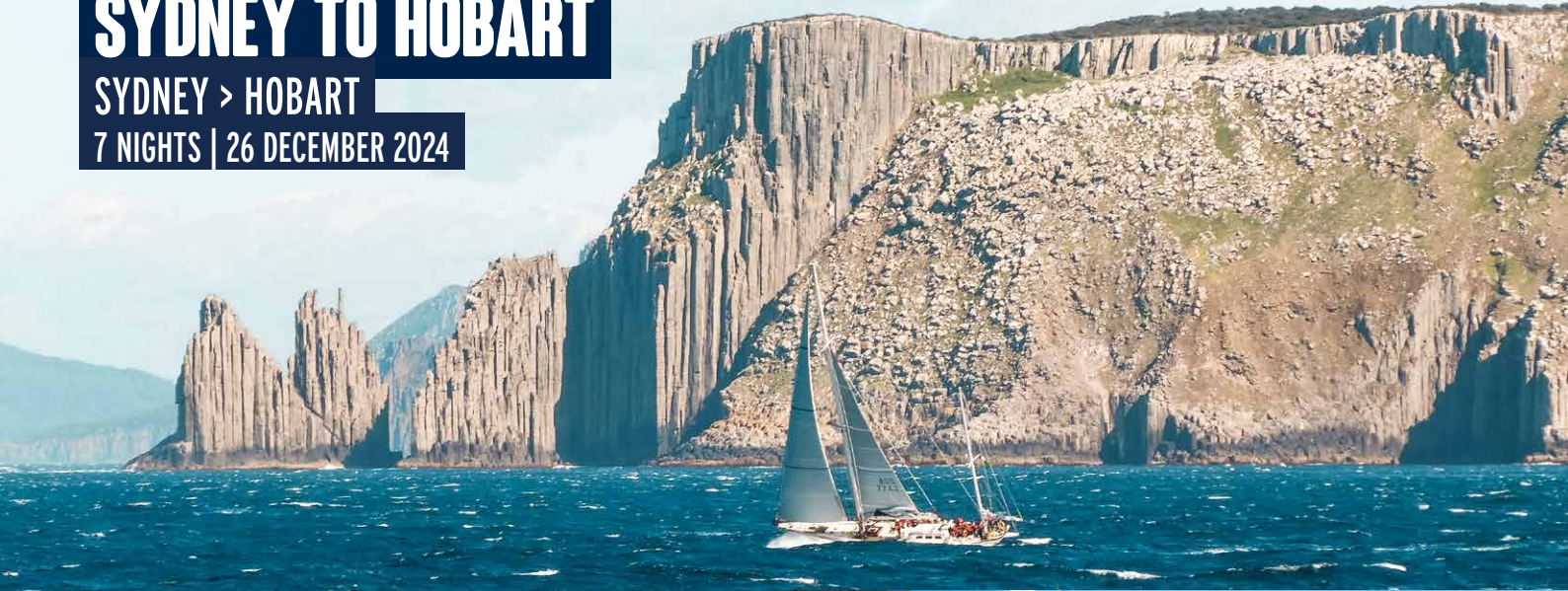
Our Tasmania adventure concludes in Hobart this morning as we bid farewell to new-found friends, the Master and crew, disembarking at 8:00am. Enjoy a complimentary transfer to CBD hotels or the airport.



A YACHTSMAN'S CRUISE: SYDNEY TO HOBART

SYDNEY > HOBART

7 NIGHTS | 26 DECEMBER 2024



①

Expedition Highlights

- > Enjoy a close up view of the start of the Sydney to Hobart Yacht Race from your vantage point North of Sydney Harbour
- > Enjoy expert commentary and insights from our guest lecturer as you watch the yachts race around the heads and sail south
- > Cruise the scenic south coast and cross the Bass Strait as we trail the fleet
- > Visit Adventure Bay on Bruny Island and stretch your legs on the Fluted Cape walk
- > Arrive in Hobart to enjoy the buzz of the race conclusion, stroll through the race village to see the supermaxis moored or perhaps attend the Taste Of Tasmania festivities (additional cost)
- > Ring in the New Year aboard *Coral Discoverer* and enjoy a sundeck cocktail party while watching the fireworks over the Derwent River

See Page 14 for Departures & Fares



②



③



④

[VIEW AVAILABILITY & BOOK ONLINE >](#)



ITINERARY: 7 NIGHTS > SYDNEY TO HOBART

DEPART SYDNEY

Arrive at your SailSAFE check-in location (time and location to be advised in pre-departure documentation) before boarding *Coral Discoverer* at its embarkation point in Palm Beach, Broken Bay. You will be met by the ship's tender and transferred to the *Coral Discoverer* to embark at 8:30am for 10am departure.

Enjoy lunch while the ship positions off North Head. From the Xplorer Bar, celebrate the start of the Sydney to Hobart Yacht Race and watch the fleet round the heads and sail south.

Our Expedition Team will craft the flexible itinerary around the weather conditions and views of the trailing fleet to offer you the best experience of the race and Tasmania's coastline.

Below are key destinations we may visit.

SCENIC COASTAL CRUISE & BASS STRAIT CROSSING

Cruise the scenic coastline from Sydney as a yachting expert presents commentary on the race and lectures on yachting and maritime history. Enjoy presentations, spot yachts, or relax on deck as we cross the vastness of Bass Strait.

TASMAN NATIONAL PARK & FORTESCUE BAY

While visiting the Tasman Peninsula, watch fur seals hauling out on the rocks as well as playful dolphins feeding and magnificent albatross soaring amongst the updrafts created by the sea cliffs. Visit Fortescue Bay, hike sections of the coastal Tasman Trail, take a scenic Xplorer cruise of the rugged coastline and kayak in Canoe Bay.

FREYGINET NATIONAL PARK & WINEGLASS BAY

The spectacular peninsula of Freycinet is crafted from pink granite peaks - the Hazard mountains - surrounded by azure bays, and backed by dry eucalyptus forest. Enjoy a hike to the Wineglass Bay Lookout and later, join a beachcombers walk along the bay.

MARIA ISLAND NATIONAL PARK

Maria Island is referred to as a Noah's Ark for native Tasmanian species. It is one of the best places in Australia to observe endemic birdlife as well as wombats, Cape Barren geese, Bennett's Wallabies and pademelons. Observe the rich history with a stroll amongst the remnants of the Darlington convict settlement, or take a walk to the striking Painted Cliffs.

BRUNY ISLAND & ADVENTURE BAY

Experience the rugged beauty of the Fluted Cape as you walk along the sheer coastal cliffs or cruise for a closer look around Penguin Island. Learn about the rich maritime history of Adventure Bay as you meander past the ruins of old whaling stations on the way to Grass Point.

NEW YEARS EVE

Enjoy the end of the Sydney to Hobart race celebrations on New Year's Eve from onboard *Coral Discoverer*. Welcome the New Year with a view of the fireworks display over the Derwent River.

ARRIVE HOBART

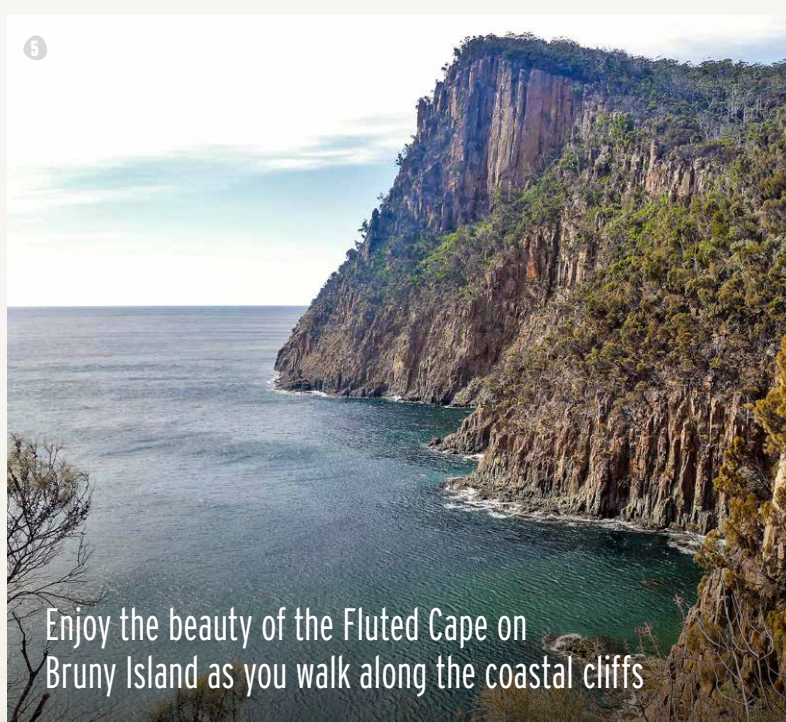
Arrive in Hobart at 7:30am for a disembarkation at 8:00am on 2nd January. There will be complimentary post cruise transfers to CBD hotels and to the airport.



TRIP LOG

"We reached our destination outside the entrance of Sydney Harbor and while lunch was served on the sundeck we waited for the start of the race. Then suddenly, the first of the supermaxi yachts came racing through the heads. Captain Simon skillfully maneuvered the *Coral Discoverer* into position so we could get amongst the fleet. Guest lecturer Sue, a veteran of 17 Sydney to Hobart yacht races provided excellent commentary on what tactics the yachts would use to take advantage of the winds and currents. We were moving along at speed in *Coral Discoverer*, however it looked as if we were standing still as *Andoo Comanche* raced up behind."

SHANE PINNER > SYDNEY HEADS, 26 DECEMBER 2022



Enjoy the beauty of the Fluted Cape on Bruny Island as you walk along the coastal cliffs



Sue Crafer Guest Lecturer

Sue Crafer is a veteran of no less than 16 Sydney to Hobart Yacht Races. She was a crew member aboard *Ragamuffin* in 2016 and her 2021 race was on a TP52 called *Smuggler*. She was one of an all-female crew to race in the Volvo Ocean (or Whitbread Round the World) Race in 1993/4.

2024 & 2025 DEPARTURES & FARES

COASTAL WILDS OF TASMANIA

10 Nights - Departs Hobart

VISIT >

Date	Departs
28 January 2024	Hobart
07 February 2024	Hobart
17 February 2024	Hobart
28 January 2025	Hobart
07 February 2025	Hobart
17 February 2025	Hobart

Rates: Coral Discoverer

	Bridge Deck Stateroom	Promenade Deck Cat A	Promenade Deck Cat B	Main Deck Cat A	Main Deck Cat B
Twin Share	\$10,980	\$10,320	n/a	\$8,720	\$7,920
Sole Use	n/a	n/a	\$14,280*	n/a	n/a

COASTAL TREKS OF TASMANIA

10 Nights - Departs Hobart

VISIT >

Date	Theme	Departs
18 January 2024		Hobart
18 January 2025		Hobart

Rates: Coral Discoverer

	Bridge Deck Stateroom	Promenade Deck Cat A	Promenade Deck Cat B	Main Deck Cat A	Main Deck Cat B
Twin Share	\$10,980	\$10,320	n/a	\$8,720	\$7,920
Sole Use	n/a	n/a	\$14,280*	n/a	n/a

FLAVOURS OF TASMANIA

8 Nights - Departs Melbourne

VISIT >

Date	Departs
09 December 2024	Hobart

Rates: Coral Adventurer

	Coral Adventurer	Bridge Deck Balcony Suite	Bridge Deck Stateroom	Explorer Deck	Promenade Deck	Coral Deck
Twin Share	16,500	12,850	11,700	8,800	7,300	
Sole Use	n/a	n/a	17,550	13,200	10,950	

CIRCUMNAVIGATION OF TASMANIA

16 Nights - Departs Hobart

VISIT >

Date	Departs
02 January 2024	Hobart
27 February 2024	Hobart
02 January 2025	Hobart
27 February 2025	Hobart

Rates: Coral Discoverer

	Bridge Deck Stateroom	Promenade Deck Cat A	Promenade Deck Cat B	Main Deck Cat A	Main Deck Cat B
Twin Share	\$19,780	\$18,320	n/a	\$15,420	\$14,120
Sole Use	n/a	n/a	\$25,380*	n/a	n/a

A YACHTSMAN'S CRUISE: SYDNEY TO HOBART

7 Nights - Departs Sydney

VISIT >

Date	Departs
26 December 2024	Sydney

Rates: Coral Discoverer

	Bridge Deck Stateroom	Promenade Deck Cat A	Promenade Deck Cat B	Main Deck Cat A	Main Deck Cat B
Twin Share	\$7,420	\$6,880	n/a	\$5,820	\$5,280
Sole Use	n/a	n/a	\$9,570*	n/a	n/a

Prices are per person, listed in Australian Dollars (AUD) and include GST.

Brochure pricing is accurate at time of printing and subject to change. Refer to website pricing at time of booking. *Limited sole use occupancy available.

 Coastal Treks of Tasmania

DISCOVER MORE ONLINE >

Bushland walking through Maria Island





CORAL DISCOVERER

①

Our expedition vessel *Coral Discoverer* will be your home for these voyages. *Coral Discoverer* accommodates 72 guests in 36 spacious staterooms with all Bridge Deck Balcony Staterooms offering private balconies.

With over 1000sqm of open deck space including a wrap-around Promenade deck with panoramic views, *Coral Discoverer* features spacious living spaces. She is exceptionally nimble and maneuverable, with a shallow draught to get up close to destinations featuring ocean views from all public spaces and all outside facing staterooms. Multiple indoor and outdoor bars, including our Explorer Bar on the Sun Deck, a well-appointed communal lounge and dining spaces create an environment designed for guest comfort. A floor-to-ceiling refurbishment in 2016 meant she was updated to perfectly accommodate Coral Expeditions' style of expedition cruising.

Coral Discoverer is a purpose-built for comfortable ocean voyages and for exploring remote areas inaccessible to larger cruise ships. The ship's lightweight Xplorer expedition tender extends the capabilities of the ship by allowing deeper exploration on shore excursions and an easy, step-on embarkation from the ship's main deck. *Coral Discoverer* also features active stabilisers for ocean cruising alongside advanced navigation and propulsion systems.

As an Australian flagged and crewed vessel, you can expect the highest standard of service, environmental responsibility and the intimate and personal experience of small-ship cruising on *Coral Discoverer*.

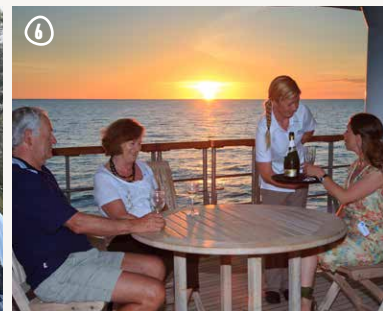
Features

- One Xplorer tender, 3 Zodiacs • Open Bridge
- Single seat dining • Three cocktail bars • Panoramic Sun Deck • Spacious lounge and deck areas

Stateroom Categories

- | | |
|---------------------------------|----------------------------|
| Bridge Deck Balcony Staterooms | • 20sqm • Private Balcony |
| Promenade Deck Cat A Staterooms | • 18sqm • Picture Window |
| Promenade Deck Cat B Staterooms | • 15sqm • Picture Window |
| Main Deck Cat A Staterooms | • 18sqm • Porthole Windows |
| Main Deck Cat B Staterooms | • 15sqm • Porthole Windows |

[VIEW DECK PLAN >](#)





IMAGES 1 Fur seals, Maria Island | 2 King's Eyebright, Bramble Cove | 3 Port Arthur | 4 Sunset drinks at Cape Pillar

**SMALL SHIPS
FEWER THAN
120 GUESTS**

**PURPOSE BUILT
SHIPS & UNIQUE
TENDERS**

**REMOTE
NATURE-BASED
EXPEDITIONS**

**WARM
AUSTRALIAN
HOSPITALITY**

**UNRIVALLED
LOCAL
EXPERTISE**



Contact us today or speak with your travel agent.

Online www.coralexpeditions.com
 Email explore@coralexpeditions.com
 Free call (Australia) 1800 079 545
 Outside Australia +61 7 4040 9999

Head office PO Box 2093 Cairns 4870 QLD Australia | ABN 51 010 809 417



coralexpeditions
 AUSTRALIA'S PIONEERING CRUISE LINE

Last Updated: April 8, 2024