

RAJA AMPAT & SPICE ISLANDS

2025 - 2027 VOYAGES

AUSTRALIAN
OWNED AND
FLAGGED

UNRIVALLED
LOCAL
EXPERTISE

A TRUE
EXPEDITION
ETHOS

PURPOSE
BUILT
SHIPS

WARM
AUSTRALIAN
HOSPITALITY

UNIQUELY
DEEP
CONNECTIONS



RAJA AMPAT & SPICE ISLANDS FOR TRUE EXPLORERS

The rich history and diverse marine life of Raja Ampat and Spice Islands are brought to life on this 18-night voyage. Retrace the ancient trade routes of spice merchants trading Chinese silks for cloves, Indian cotton for nutmeg and Arabian coffee for pepper.

Explore some of the hundreds of rarely visited islands of Raja Ampat whose waters harbour over 75% of the world's coral species. At Cenderawasih Bay, swim with the gentle whale sharks – the largest living non-mammalian vertebrate – in what guests describe as a 'once in a lifetime experience.' Walk through vibrant village markets. Experience a traditional welcome at Banda Neira where our ship is serenaded by kora kora canoes.

Enjoy the view over sunset drinks at 17th century Dutch Fort Belgica. Climb atop Mount Pindito to marvel at one of the world's most photographed marine scenes: the jagged green limestone cliffs and crystal clear water of Wayag.

Expedition Note

These are expedition itineraries covering remote regions. Your Captain and Expedition Team will make changes to the daily schedule when necessary to maximise your experience. These itineraries are indicative - some variation may occur due to weather conditions, safety or local community requirements.

We recommend that you arrive to the embarkation port on the day prior to departure and schedule your own travel arrangements for the following disembarkation due to unexpected changes that may occur in scheduling.

Voyage Series

> Raja Ampat & Spice Islands

18 Nights | Departures between Darwin & Sorong

2025: 6 Sep

2026: 10 & 28 Feb, 7 Mar, 15 Aug, 2 Sep & 27 Dec

2027: 14 Jan, 16 Aug & 3 Sep

Voyages also in Indonesia

> Island Trails & Traditions of Indonesia

17 Nights | Singapore to Darwin | 23 Jan 2026

[View details online](#)



WHY CHOOSE CORAL EXPEDITIONS

Our fleet of three specialised expedition ships and tenders take guests to some of the most beautiful, yet undiscovered islands and coastal regions of the world. Our guests are attracted by our relaxed small ship atmosphere and itineraries larger ships cannot replicate.

At a time when the cruise industry is moving to larger and less personal ships with more gimmicks, we have purposefully limited the size of our ships to maximise the expedition experience. Our cuisine is prepared in small batches from our onboard galley using quality Australian produce and wine. We operate to high Australian standards of safety with qualified Australian crew wherever we go. We were the first to offer interpretive programs reflective of the destinations we visit and to employ Expedition Leaders, Guest Lecturers, Marine Biologists, and SCUBA Instructors – a tradition that continues today.

- **We focus on the destinations.** Connecting guests with nature, culture, and heritage with more time ashore in remote natural areas away from the crowds.
- **A true expedition ethos.** Small ships mean fewer guests and more intimate and personal encounters along the way. We have deep respect and strong connections with the places we visit and maintain flexibility in our planning to make impromptu stops if extraordinary opportunities in nature present.
- **Warm Australian hospitality.** Our all-Australian crew are passionate and proud to share the adventure with you. Always attentive and caring with a friendly and approachable style in keeping with our Australian values.
- **Purpose-built ships.** Designed for tropical expedition access, our fleet is comfortable, safe, and maneuverable enabling you to get in shallow and close to nature with ease where other operators cannot. Plenty of wide-open public spaces and all outward facing staterooms connect you with the destination.
- **Our unique Xplorer tenders.** The safari jeeps of the sea; our Xplorers enable guests safe and easy access onto excursions into remote rivers, reef systems and isolated beaches. All guests get out on excursion at once with no queues or waiting. Shade canopy to protect from the tropical sun, comfortable seats, open sides and audio systems enhance the journey. These are supported by Zodiacs along the way.
- **Local expertise that is unrivalled.** Our expert guides and local crew have decades of experience to draw on regarding the tides, the charts, and the seasons. We get you to the right place at the right time and always explore in a respectful and caring manner.
- **All inclusive.** Your cruise fare covers everything that matters most including excursions, activities, meals and drinks, expert guides, taxes, and fees. Unpack once and then simply relax and enjoy the experience.
- **Our service and care.** Our friendly staff and crew have one focus – to help you enjoy the trip of a lifetime. We will always be willing to assist and with a genuine care that is part of our culture.

This is true expedition cruising. At Coral Expeditions, we have built our reputation on offering a truly immersive and authentic expedition cruise experience. It is more relevant today than ever and sets us apart from the pack.

RAJA AMPAT & SPICE ISLANDS

DARWIN & SORONG

18 NIGHTS | SEP 2025, FEB & MAR 2026

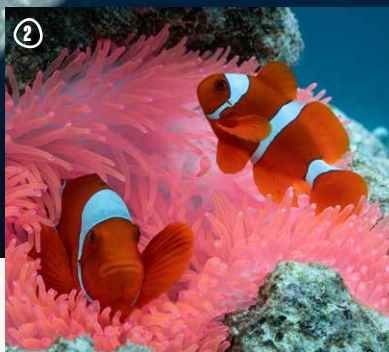


①

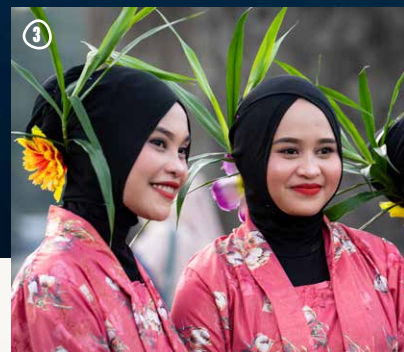
Expedition Highlights

- > Indulge with five days in spectacular Raja Ampat, the famed 'Four Kings' archipelago
- > Swim in the turquoise waters of Balbulol in Misool
- > Discover Wayag's 'gumdrop' islands and be rewarded by the view from Pindito Peak
- > Swim with the gentle and majestic whale sharks at Cenderawasih Bay, the world's largest fish
- > Be welcomed to Banda Neira by the exciting spectacle of the traditional Kora Kora canoes
- > Explore the ancient kingdoms fought over by English, Dutch, and Portuguese explorers
- > Learn the customs & cultures of West Papua and Indonesia, and experience local culture, including traditional dances, handicrafts and fresh local food

②



③



④



This itinerary is an indication of the destinations we visit and activities on offer. Throughout the expedition we may make changes to the itinerary as necessary to maximise your expeditionary experience. Allowances may be made for seasonal variations, weather, tidal conditions, cultural ceremonies, and any other event that may affect the operation of the vessel.

IMAGES 1 Whale shark, Cenderawasih Bay - credit @ashkarasphotography | 2 Clown fish spotted on expedition
3 Dance performers, Fort Belgica | 4 Snorkelling from the Xplorer in Wayag



ITINERARY: 18 NIGHTS > BETWEEN DARWIN & SORONG

This itinerary is based on a Darwin departure, slight variances occur when departing from Sorong.

DEPART DARWIN OR SORONG

Embark Darwin: Board at Darwin's Fort Hill Wharf at 6:30am for 8:00am departure.

Embark Sorong: *An optional charter flight is available from Darwin.* Check in at 6:00am for a 7:30am departure accompanied by our Expedition Team. On arrival in Sorong, enjoy lunch at a local hotel before embarking at 4:00pm for a 5:00pm departure.

As dusk falls, join your fellow travellers for the Captain's Welcome.

CROSSING THE TIMOR SEA | YAMDENA ISLAND, SPICE ISLANDS

Cross the Timor Sea to Yamdena Island, where our Expedition Team will provide an insightful session on Raja Ampat, the Spice Islands, and safety protocols for Indonesia. In Tumbur, explore the artisan village and its skilled woodcarvers and Ikat weavers. After a welcome ceremony, stroll the village and shop for Tanimbarese crafts directly from the makers.

SEA DAY

Spend a day relaxing at sea listening to our guest lecturers engaging presentation's and enjoy our onboard facilities.

BANDA NEIRA - SPICE ISLANDS (2 DAYS)

Day 1: Approaching Banda Neira, see Gunung Api volcano and watch Moluku paddlers maneuver kora kora canoes. Snorkel or dive over lava flow reefs, then explore ashore with local tea on the waterfront. Later, visit the well-preserved Fort Belgica, built in 1611, and enjoy a traditional dance performance before toasting the sunset with sparkling wine.

Day 2: This morning, choose to explore the nutmeg villages of Gunung Api in search of the endemic Banda myzomela, head out for another snorkel or dive in the crystal waters of the lava flow.

MOLANA ISLAND & SAPARUA ISLAND - SPICE ISLANDS

Arriving early at Molana Island, we explore its rich history dating back to the Portuguese era. This uninhabited island hosts 85 tree species, Pacific monitor lizards, Moluccan scrubfowl, and coconut crabs. Ruins of a Dutch hospital, left unfinished during World War II, remain as a historic landmark.

Snorkel in clear waters over vibrant corals before heading east to Saparua Island, where village locals welcome us. Visit Fort Duurstede, a 17th-century Dutch fort with a rich history, and witness a traditional war dance with shields and swords—a true cultural experience.

SERAM ISLAND - SPICE ISLANDS

En route to Sawai Village on Seram Island, stop at Besar Island to snorkel and dive in coral reef-bound lagoons. One of the oldest villages in the Maluku Islands, Sawai is set in the middle of the Banda Sea, with simple stilt homes over the ocean. Stroll along the banks of Asinahu Lake, where brilliant blue ceramic tiles lead to a viewpoint overlooking Sawai Bay.

MISOOL - RAJA AMPAT

Our introduction to Raja Ampat begins at Misool, one of the four main islands, part of an archipelago with over 1,500 islands. Swim and kayak (weather permitting) among Misool's conical islands, then visit the iconic Bulbulol waterways with Christmas Rocks, where dramatic limestone formations resemble chess pieces. Swimming and diving here is a highlight of your Raja Ampat adventure.

KOFIAU ISLAND - RAJA AMPAT

Be welcomed by village dancers from their traditional pontoon boats before leading us ashore at Deer Village where local villagers escort us through the home. Birders have the opportunity to take a jungle walk to spot the endemic Kofiau Paradise Kingfisher before rejoining the village walk. After lunch, you dive, snorkel and swim in the uniquely featured Boo Kecil - if you're lucky, you'll get to see mantas rays!

WAISAI, WAIGEO ISLAND & PIAYNEMO - RAJA AMPAT

Early morning birders will disembark the ship to spot either the Wilsons Bird of Paradise or the Red Bird of Paradise; amongst other local species in a moderate 30-40 min jungle walk. Bring your headtorches as it will be dark when you disembark the Xplorer. In the afternoon you visit the spectacular Piaynemo. Climb the 300 stairs for incredible views across turquoise waters and limestone karst formations.

WAYAG - RAJA AMPAT

More Raja Ampat treasures await today as we explore the magnificent waterways and lagoons by Xplorer with time to swim in crystal clear waters and walk upon white-sand beaches amongst the many islands. After lunch, there is an opportunity for an energetic hike up to famed Pindito Peak, with hikers rewarded by panoramic views over the island and its spectacular lagoon. Alternatively, you can choose to relax by swimming, snorkelling or kayaking.

AYU ATOLL - RAJA AMPAT

Spend the day in this remote, biodiverse coral atoll teeming with fish. The Expedition team will source the best snorkelling and diving locations depending on the conditions.

SEA DAY

Spend a day relaxing at sea listening to our guest lecturers engaging presentation's and enjoy our onboard facilities.

CENDERAWASIH BAY & KWATISORE VILLAGE - INDONESIA

Cenderawasih Bay is Indonesia's largest marine park, spanning 14,500 sq km. It protects whale sharks, dugongs, dolphins, 200 fish species, and 150 coral species. One of the few places to swim with endangered whale sharks, encounters aren't guaranteed, but if they appear, snorkeling alongside them is unforgettable. Later, visit Kwatisore village with local guides to learn about West Papuan customs and traditional lifestyles.

ROON - INDONESIA

A highlight of Roon Island is the wreckage of a Japanese Zero fighter plane, visible to snorkelers when the weather permits. The wreck has become a marine habitat, home to large corals, gorgonian fans, lionfish, surgeonfish, turtles, and other marine life. Connect with local villagers to learn about their daily lives.

SWAND/MANIM ISLAND - WEST PAPUA

This is dynamic day as our locations is subject to prevailing weather and tides. Irrespective, you'll have the opportunity to beachcombe, swim and snorkel in nearby reefs from the Xplorer or Dive the clear, calm waters and add to your lengthy list of species sighted during your voyage.

MANSINAM ISLAND - WEST PAPUA

Learn of the impacts of Christianity across West Papua with local guides on this unassuming island off the West Papuan mainland. Snorkel nearby coral reefs or dive World War II wrecks in the afternoon.

AMSTERDAM ISLAND - WEST PAPUA

Part of the Su Islands group off the northern coast of West Papua, today we visit the little-known Amsterdam Island. Enjoy the opportunity to explore with local guides and a cultural welcome performance. There is also opportunity to enjoy beachcombing and swimming. *NB: This is a seasonal stop, an alternate location will be visited if a ceremony is occurring.*

DAY 19: ARRIVE IN SORONG/ DARWIN

Disembark Sorong: Arrive into Sorong at 8:00am, disembark the ship and if you are booked on to the Charter flight, take lunch in a local restaurant before you flight to Darwin via Manado.

Disembark Darwin: We disembark at 8:00am. A complimentary transfer is provided to CBD hotels or the airport.

DEPARTURES & FARES

RAJA AMPAT & SPICE ISLANDS

18 Nights | *Coral Geographer* | Departs:

- > 6 September 2025 - Darwin to Sorong
- > 28 February 2026 - Sorong to Darwin
- > 10 February 2026 - Darwin to Sorong

	Bridge Deck Balcony Suite	Explorer Deck Stateroom	Promenade Deck Stateroom	Coral Deck Stateroom
Twin Share	39,990	32,490	26,990	23,990
Sole Use	n/a	48,735	40,485	35,985

18 Nights | *Coral Adventurer* | Departs:

- > 7 March 2026 - Sorong to Darwin
- 2 September 2026 - Sorong to Darwin
- > 15 August 2026 - Darwin to Sorong
- 27 December 2026 - Darwin to Sorong

	Bridge Deck Balcony Suite	Bridge Deck Stateroom	Explorer Deck	Promenade Deck	Coral Deck
Twin Share	40,990	34,990	32,490	26,990	23,990
Sole Use	n/a	n/a	48,735	40,485	35,985

18 Nights | *Coral Geographer* | Departs:

- > 14 January 2027 - Sorong to Darwin
- > 3 September 2027 - Sorong to Darwin
- > 16 August 2027 - Darwin to Sorong

	Bridge Deck Balcony Suite	Explorer Deck Stateroom	Promenade Deck Stateroom	Coral Deck Stateroom
Twin Share	40,990	32,490	26,990	23,990
Sole Use	n/a	48,735	40,485	35,985

Optional Charter Flights are included as a part of this itinerary.

Cruise and Fly Fare: Fare includes charter flight Darwin to Sorong / Sorong to Darwin, via Manado. Connect with ease on this hosted charter flight transfer to or from Australia. Flight duration approximately 4 hours, 50 mins.

Cruise Only: You can easily opt out of the charter flight and we will adjust the fare. Please contact reservations.

Prices are per person and listed in Australian Dollars (AUD). Refer to website pricing at time of booking as pricing may be subject to change.

*Limited sole use occupancy available.

Snorkelling & Scuba

The opportunity to snorkel and scuba dive over spectacular coral gardens and come face to face with brightly coloured tropical fish is a highlight of our expedition.

Beginners can join guided snorkelling tours or introductory and resort-style dives, while more experienced divers are able to participate in challenging dives (scuba diving at additional cost). Our Dive Instructor accompanies you every step of the way. Snorkelling equipment will be assigned to each guest at the commencement of the cruise, and the onboard introductory scuba skills session is complimentary.

Scuba diving requires medical clearance and a medical certificate.



CUISINE & WINE

On board you will discover a personal and relaxed atmosphere befitting our Australian heritage. We do not have formal nights, organised entertainment or designated seating. Instead, you will enjoy a convivial atmosphere shared by like-minded explorers, our experienced and friendly crew always at hand.

Enjoy freshly prepared meals from the open galley featuring local ingredients from the regions we visit. Relax in the spacious and open atmosphere of our indoor and outdoor bars and dining areas. Enjoy craft beers, artisanal spirits and wines sourced from Australia and New Zealand's finest terroirs at the end of a long day ashore.

WINE SELECTIONS

We offer two wine packages, which guests may purchase in addition to our house selection, which feature hand-selected Australian wines and French Champagne.

- > **A Taste of Australia Selection:** Six bottles featuring Australian wines - three reds, two whites and a rosé.
- > **Connoisseur Selection:** Six bottles featuring two whites, three reds and French Champagne.

INCLUSIONS

- > All excursions with our Expedition Team
- > Use of Xplorer, Zodiacs and kayaks
- > Snorkelling and equipment (Scuba diving at additional cost)
- > Daily lectures and briefings with Guest Lecturers
- > All meals, chef-prepared on board
- > Captain's welcome and farewell events, and open bridge access
- > Selected wines, selected beers and house spirits, juices, and soft drinks served with lunch and dinner
- > 24-hour barista-style coffee and tea station
- > Wi-Fi access - standard speed connectivity enabling email, social image sharing, web browsing and messaging
- > All entrance fees to National Parks, ports, traditional owner fees and charges imposed by governing authorities
- > Tips and gratuities
- > Use of all onboard facilities, incl. a reference library
- > Your expedition photos captured during the voyage

IMAGES 1 Chefs at work, credit David Kirkland | 2 Dinner is served
3 Sunset drinks on the Vista Deck



CORAL ADVENTURER

MAX 120 GUESTS

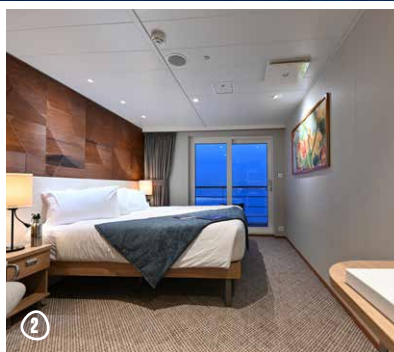
①

Features

- 2 Xplorer tenders, 6 Zodiacs • Navigator Lounge in Bridge
- Single seat dining with wine table • Three cocktail bars
- Well-equipped gym • Passenger elevator
- Anchor-free technology

Stateroom Categories

Bridge Deck Balcony Suites	• 55.8sqm • Private Balcony
Bridge Deck Balcony Staterooms	• 21.4sqm • Private Balcony
Explorer Deck Balcony Staterooms	• 21.4sqm • Private Balcony
Promenade Deck Staterooms	• 17sqm • Picture Window
Coral Deck Staterooms	• 17sqm • Porthole Window



②



③



CORAL GEOGRAPHER

MAX 120 GUESTS

④

Features

- 2 Xplorer tenders, 6 Zodiacs • Navigator Lounge in Bridge
- Single seat dining with wine table
- Three cocktail bars • Well-equipped gym
- Passenger elevator • Anchor-free technology

Stateroom Categories

Bridge Deck Balcony Suites	• 37.5sqm • Private Balcony
Explorer Deck Balcony Staterooms	• 21.4sqm • Private Balcony
Promenade Deck Staterooms	• 17sqm • Picture Window
Coral Deck Staterooms	• 17sqm • Porthole Window



⑤



IMAGES 1 Enjoying the beaches of Wayag | 2 Moluku paddlers maneuver kora kora canoes | 3 Red bird-of-Paradise | 4 Kayaking from the beach

SMALL SHIPS
FEWER THAN
120 GUESTS

PURPOSE-BUILT
SHIPS & UNIQUE
TENDERS

REMOTE
NATURE-BASED
EXPEDITIONS

WARM
AUSTRALIAN
HOSPITALITY

UNRIVALLED
LOCAL
EXPERTISE



Contact us today or speak with your travel agent.

Online www.coralexpeditions.com
Email explore@coralexpeditions.com
Free call (Australia) 1800 079 545
Outside Australia +61 7 4040 9999

Head office PO Box 2093 Cairns 4870 QLD Australia
ABN 51 010 809 417



coralexpeditions
AUSTRALIA'S PIONEERING CRUISE LINE