



2025 VOYAGE

CIRCUMNAVIGATION OF AUSTRALIA

EXPLORING AUSTRALIA'S COASTAL LEGEND

60 NIGHT EXPEDITION | 3 SIGNATURE EVENTS | 4 MAJOR PORTS | 48 EXCURSION DAYS | SPECIAL GUESTS | TASTES OF AUSTRALIA



An aerial photograph of a coastal landscape. In the foreground, there's a sandy beach with white foam from waves washing onto it. The water is a vibrant turquoise color. Beyond the beach, there's a wide expanse of low-lying, scrubby vegetation in shades of green and brown. In the distance, a small blue ship is visible on the horizon under a clear blue sky with some light clouds.

EXPLORING AUSTRALIA'S COASTAL LEGEND

Coral Adventurer | departs Cairns 17 October 2025 | only 60 staterooms

Join Coral Expeditions on a unique and pioneering expedition to discover the legend of Terra Australis Incognita, our great island continent, on a rare circumnavigation voyage around the remote shorelines of Australia.

Be one of only 112 guests to undertake this epic adventure of a lifetime as we connect with remote natural places, significant historical sites, amazing natural encounters, and small cultural communities of Australia.

Our all-Australian crew and special guest experts will provide local knowledge and insights as they proudly showcase the people, places and tastes that are Australian legend.

Following on from the success of our sold out inaugural Australian Circumnavigation in 2022, this voyage will feature 48 excursion days, visit 4 major coastal ports and include 3 significant events including an island cultural festival in the Torres Strait, a winemakers at Leeuwin Estate in the Margaret River and a charter flight to to an Outback Homestead in Longreach.

THE EXPEDITION EXPERIENCE



This will be a rare and special travel experience with a planned schedule of 48 days filled with excursion experiences dispersed around the vast and diverse coastal landscape of Australia. Guests will be accompanied by our all-Australian crew and a range of special hosts with deep expertise to showcase and share experiences ranging from intimate seasonal encounters with endemic marine and terrestrial flora and fauna, cultural connections with remote first nations and coastal communities, discovering dramatic shorelines and tidal landscapes and learning of the rich heritage and historical significance of destinations along the way. Guests will meet legendary Australian characters and indulge in the bountiful tastes of Australia on shore and at sea including seafood, wines, beef, dairy and local seasonal produce.

Our culinary team has developed a program of shore excursions and onboard offerings inspired by the globally renowned regional produce we will find along the way. This will include tastings of cool climate wines in Tasmania's Tamar region, indulging in oysters and abalone fresh from the sea in South Australia, enjoying a special seafood night onboard whilst in the Houtman's Abrolhos Islands and sampling the tropical delights of northern Australia's fruits and native ingredients.

Guest numbers will be limited to only 112 passengers ensuring this is a rare and unique travel opportunity.

SIGNATURE EVENTS



CULTURAL FESTIVAL

Enjoy a unique cultural festival and feast with the remote Torres Strait community of Thursday Island. Feel the welcome embrace of locals as they share traditional dance performances, art and craft and invite you to join in cultural traditions.

Experience the rich heritage on a guided coach tour, exploring its historic and culturally diverse sites of the Japanese Pearl Divers Memorial and the monument honouring Bernard Namok Senior, designer of the Torres Strait Islands Flag. Local elders will share their stories and involve guests in a vibrant cultural festival.



WINEMAKERS LUNCH

Indulge in a four-course dinner with the Winemaker at renowned Leeuwin Estate in the Margaret River. Your Host, winemaker Paul Atwood and the culinary team will present a locally inspired menu designed to pair with the tastes of the legendary "Art Series" wine range.

Leeuwin Estate combines fine wine and food in a picturesque setting in Western Australia's Margaret River region. With sweeping views overlooking the majestic Karri Forest. Celebrating the combination of fine wine, food and art, Leeuwin features an award-winning restaurant, cellar door and art gallery.



A DAY IN THE OUTBACK

Board your private charter flight from Townsville for a day in the outback. Arriving in Longreach, explore the local town before we transfer to Ilfracombe to visit Machinery Mile and enjoy a traditional and lively pub lunch at the historic Wellshot Hotel.

As the sun sets, outback legend Alan "Smithy" Smith welcomes you to his homestead at Rosebank Station, for a station tour, entertainment and a fireside cook up and sundowners as the sun sets over the classic Queensland countryside. We will all fly back to *Coral Adventurer* in the evening with a late supper onboard and a leisurely sleep-in the next day.



ACROSS THE TOP OF NORTHERN AUSTRALIA

Let us immerse you in the ancient traditional cultures and unique saltwater landscapes of Australia's top end. Step ashore with ease at some of our most remote shores as we head westward from Cairns all the way to the north-western Continental Shelf – Rowley Shoals. Explore the offshore islands of the Great Barrier Reef, remote Cape York and Arnhem Land, the vibrant cultural communities of the Torres Straits and Tiwi islands, and the vast and magnificent landscapes of the Kimberley. Savor wild barramundi, mud crab, and Davidson bush plum as you encounter rare birdlife, marine species like whales, crocodiles, and turtles, and witness powerful tides carving the landscapes. Share drinks and stories at day's end with spectacular sunsets and newfound friends.

HIGHLIGHTS

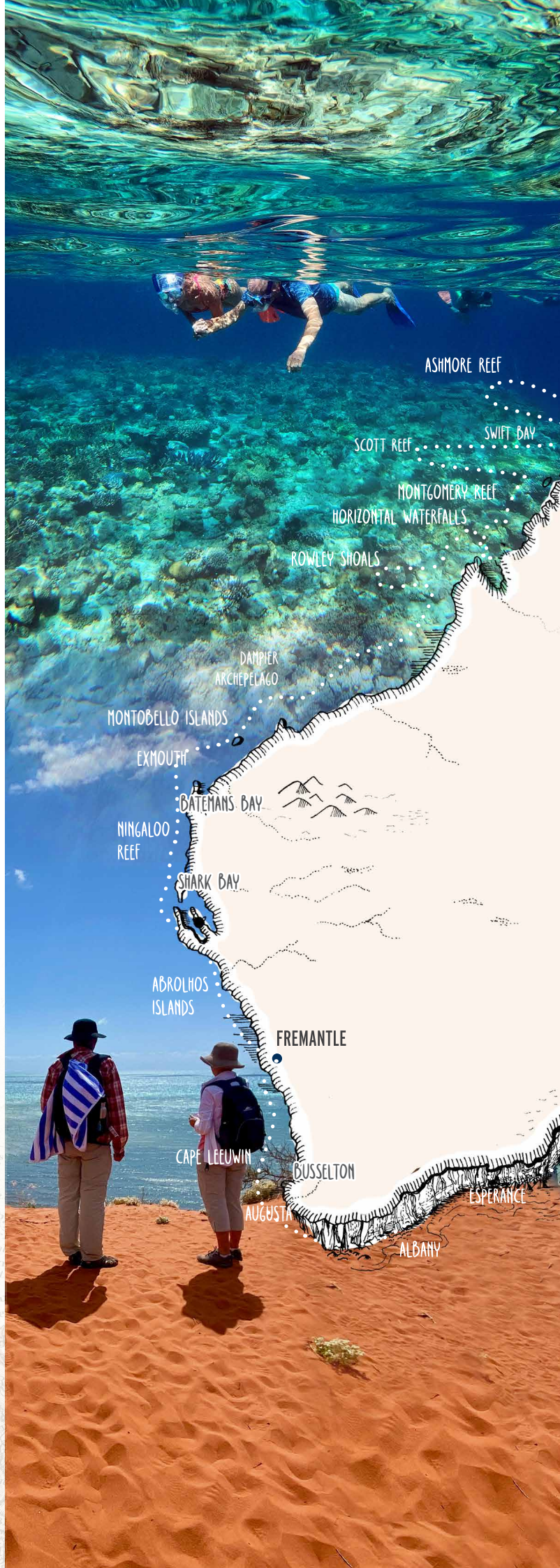
- › Walk on country with traditional First Nations elders on Stanley Island.
- › Raise your glass with a Champagne toast at Pajinka on the Tip of Australia.
- › Snorkel and dive in the pristine marine environs of Lizard Island and Ashmore Reef.
- › Witness the power and majesty of the Kimberley geography and tides at iconic sites of Talbot Bay and Montgomery Reef.
- › Connect with indigenous culture and community in Yirrkala and the Tiwi Islands.
- › Step ashore on a true island hideaway and hear the legend of the *Bounty* on Restoration Island.

ISLAND OUTPOSTS OF WESTERN AUSTRALIA

Explore the extraordinary beauty of Western Australia's marine environment, accessible only by sea. Visit remote reefs and islands teeming with rare seabirds and fascinating marine life. Witness the annual whale migration, offering daily chances to see these majestic creatures with their young. Learn about the pioneering life of local fishermen, blending ancient and modern practices. Our onboard experts will provide insights into early explorers and shipwrecks in these untamed waters. Along the way, savor the flavors of Western Australia with fresh crayfish, scallops, and exceptional regional wines and craft spirits.

HIGHLIGHTS

- › Visit the sites of historic shipwrecks and learn about the seafaring legend of early explorers and traders.
- › Cool off with in water adventures at the Rowley Shoals, Ningaloo and Shark Bay.
- › Witness the majestic annual whale migration of the Indian Ocean.
- › Enjoy ranger guided walks ashore in the rugged Dampier archipelago.
- › Explore wildlife encounters with rare seabirds and marine mammals at island outposts of the Lacepedes, Montebello and Muiron Islands.
- › Meet the remote fishing community of the Houtman's Abrolhos Group and indulge in fresh lobster with a special seafood dinner onboard.





CROSSING THE GREAT SOUTHERN OCEAN

Journey east across the Great Australian Bight, where powerful oceans meet the rugged, remote shores of southern Australia. Explore untouched regions and the small islands of the Recherche Archipelago. Experience close encounters with dolphins riding the swells, and colonies of seals and sea lions on rocky beaches. Discover native Australian wildlife, including kangaroos and wallabies, at Kangaroo Island and Lucky Bay. Cruise past the spectacular Bunda Cliffs and the iconic 12 Apostles. Visit small coastal communities, immerse in their way of life, and savor wild abalone and Coffin Bay oysters, paired with the finest South Australian and Tasmanian wines.

HIGHLIGHTS

- › Share the waters and shoreline with abundant colonies of seals and sea lions and migratory seabirds.
- › Visit small communities and coastal townships to meet the locals of Esperance and Port Fairy.
- › Indulge in the succulent seafood bounty of fresh oysters in Coffin Bay and abalone on Flinders Island.
- › Enjoy wildlife encounters on famous Kangaroo and Philip Islands.
- › Enter Tasmania's Tamar River and indulge in the regions world class wines and produce.
- › Step ashore on remote coastal beaches where native wildflowers may still bloom in late spring.
- › Witness the power of the Southern Ocean, sailing past Bunda Cliffs and the 12 Apostles seen in the distance.



HOMeward BOUND UP THE EAST COAST

The final leg of our grand circumnavigation showcases the beauty of Australia's Pacific shores. Begin with a sunrise sail into Sydney Harbour, explore historic Trial Bay, and snorkel the wrecks at Tangalooma. Spend a day on the World Heritage-listed K'Gari (Fraser Island), known for its white sandy beaches, freshwater lakes, towering rainforests, and rich traditional culture. Taste fresh Coral Trout and Barramundi as you dive and snorkel along the Great Barrier Reef, visiting remote Scawfell Island and the stunning Whitsundays. Enjoy our third signature experience: a charter flight visit to Longreach in Queensland's outback. Followed by an exploration of the Great Barrier Reef, including sunset drinks on Sudbury Cay. Conclude your journey with a gala dinner onboard.

HIGHLIGHTS

- › Wake early and enjoy a memorable sunrise sail into Sydney Harbour.
- › Step ashore in Trial Bay and visit the historic goal and foreshore markets.
- › Enjoy a snorkel and kayak trail amongst the shipwrecks at Tangalooma on Moreton Island.
- › Take an island tour and enjoy cultural guided talks on K'gari (Fraser Island).
- › Sail through the spectacular islands of the Whitsunday region and visit pristine Whitehaven Beach.

IMAGES Snorkel ship wrecks at Tangalooma, Moreton Island | Trek through the lush sub-tropical rainforest of K'gari



ITINERARY HIGHLIGHTS:

DAY 1: DEPART CAIRNS

Arrive at Trinity Wharf (berth to be advised) at 4:00pm, where there is time to settle into your stateroom before our 5:00pm departure.

Take the time to become acquainted with all the facilities onboard *Coral Adventurer* before joining your fellow explorers for Captain's Welcome Drinks. Afterward, enjoy your first delicious dinner as we cruise toward Lizard Island.

LIZARD ISLAND (DYIIGURRA)

We spend a whole day at Lizard Island where there is time to hike to the summit of Cook's Look and enjoy the same view Lt. James Cook did when searching for safe passage through the maze of coral reefs. Snorkel over giant clam gardens from the beach at Watson's Bay, relax on the white-sand beach beneath shady she-oak trees and learn about the tragic story surrounding Mary Watson. There will be an opportunity for water activities and an Xplorer cruise.

STANLEY ISLAND (YINDAYIN) & DAVIE REEF

Visit Stanley Island in the Flinders Island Group and take a walk to view the isolated Endaen Aboriginal rock art guided by a traditional owner who will offer an interpretation. The art here depicts the first sailing ships to visit Queensland shores. At Davie Reef enjoy swimming, scuba, snorkelling and see brown boobie bird colonies at Davie Cay.

RESTORATION ISLAND

Visit Restoration Island or Resto, as the locals call it. Here Captain Bligh, of the infamous Mutiny on the *Bounty*, made his first landfall after a long ocean crossing from Tonga, in May 1789. Restoration Island was so named by Bligh as he landed there on Oak Apple Day (anniversary of King Charles II's restoration) and the abundance of oysters and native fruits available for the crew.

Today Restoration Island is not just a National Park; one-third of the island is leased to David Glasheen, a former mining tycoon, who, after losing his fortune in the Black Friday market crash, decided to live a solitary existence on the island, and has done so for over two decades. It is an idyllic coastal island with a granite and volcanic peak 116 metres in height and a beautiful shark tooth-shaped beach spit where guests will enjoy water activities and time to explore the island.

THURSDAY ISLAND (WAIBEN)

Immerse yourself in the ancient Torres Strait Islander culture with our unforgettable traditional dance, storytelling and musical show.

BADU ISLAND & THE TIP OF CAPE YORK (PAJINKA)

At Badu, we visit the indigenous art centre to watch printmakers at work, with the opportunity to purchase prints that catch your eye.

In the evening, set foot on the northernmost point of Australia - the tip of Cape York. Surrounded by a glistening sea and bathed in the glow of twilight, we enjoy sundowner drinks and the company of like-minded explorers as we relax and watch the sun gently sink below the horizon.

SEA DAY

Enjoy a relaxing day at sea with presentations by our expert Guest Lecturers. You will hear about the fascinating history of the Makassan traders and early explorers of the Arnhem Land coast. Explore our extensive onboard library, while the hours away with a selection of games or simply gaze over the seas.

YIRRKALA ART CENTRE (GOVE PENINSULA) & BREMER ISLAND (DHAMBALIYA)

Visit the spectacular Buku-Larrnggay Mulka Centre at Yirrkala, outside of Nhulunbuy. Here, the Yirrkala Art Centre represents Yolŋu artists from around the region.

Established in 1976 as an act of self-determination, the art centre has forged a vibrant path for Yolŋu contemporary art. The museum built in 1988 houses a collection of works detailing historical artefacts and important moments, including the Message Sticks from 1935 and the Yirrkala Church Panels from 1963.

After lunch back onboard *Coral Adventurer*, we make the short journey to nearby Bremer Island. The Xplorers will drop us off on the curving golden beach of this idyllic tropical retreat. Here at the Banubanu Beach Resort, owner Helen will welcome us on the beach. Helen an Aranda woman from Alice Springs along with her husband Trevor had discovered this location over ten years ago and fallen in love with its charms. Obtaining the permission of the local community and the senior matriarch they had over the years established this tasteful seven-unit resort and the fine detail of the landscaping, infrastructure and facilities along with excellent staff service at the tasteful café was a credit to their vision, work and enterprise of their staff and helpers. Guests will be enjoying the ambience with swimming, snorkelling, walking the trail or relaxing in the café and plunge pool.

SEA DAY

Enjoy a relaxing day at sea with presentations by our expert Guest Lecturers. For free time, many guests choose to chat with new-found-friends, read a book from our onboard library, browse the art gallery or simply gaze out to sea in serene bliss.

DARWIN

We arrive into Darwin Port on the 26 October 2025 at 12:30pm. While in port, guests can enjoy free time to have dinner ashore and catch up with any friends or family they have in the area.

We will be departing Darwin at 8:00am on the 27 October 2025.

TIWI ISLANDS

Experience a traditional welcome ceremony and morning tea (damper and billy tea). On a guided tour, learn of the culture and history of the Tiwis as we explore the museum and the old mission precinct.

Visit Tiwi Design, one of the oldest and most artistically diverse art centres in Australia and produces of ochre paintings on canvas and bark, ironwood carvings, screen printed fabrics, ceramics, bronze/glass sculptures and limited-edition prints.

KING GEORGE RIVER

Cruise down the scenic King George River, through steep-sided gorges carved by a flooded river system that carved a swathe through the Kimberley landscape 400 million years ago. We will take the opportunity to get up close and view the honeycomb erosion patterns of the 80m tall sandstone cliffs.

A DAY OF ROCK ART

Today we will land at either Jar Island, Swift Bay, Wollaston Bay or Bigge Island. Each of these locations are home to fantastic Wandjina and Gwion Gwion Rock Art (Bradshaw) galleries.

Stretch your legs and explore the magnificent sandstone structures, providing an abundance of rock shelters. On the walls of these shelters is where we will find examples of this rock art.



PRINCE FREDERICK HARBOUR & HUNTER RIVER

Prince Frederick Harbour is one of the Kimberley's most spectacular locations at the southern end of York Sound. The harbour is dotted with islands lined with mangroves and monsoon rainforests, set against a backdrop of ochre-hued escarpment. White-bellied sea eagles and other birds of prey are often seen here, and at low tide, expansive mudflats reveal large populations of mudskippers and mangrove crabs. We will take our Xplorer tender vessels on a cruise up Porosus Creek where there is a very good chance to see crocodiles in amongst the mangrove banks.

ASHMORE REEF

The territory of Ashmore and Cartier Islands is made up of the West, Middle and East Islands of Ashmore Reef, as well as Cartier Island and the surrounding 12 nautical mile territorial sea. These islands are uninhabited, making them the perfect location for seabird breeding. Each year around 100,000 seabirds flock to the marine park's three tiny islands.

The reef here boasts a wide diversity of marine life, including over 70 fish species and 255 varieties of coral. To protect this reef, the Australia Government declared the Ashmore Reef National Nature Reserve in 1983. The islands also have a significant marine turtle nesting area and migratory bird populations.

Here we will spend time birdwatching, swimming and snorkelling the pristine reef.

WINYALKIN

Explore the sandstone caves of Wollaston Bay or Wollaston Creek. This mass of weathered tunnels, arches and columns form a labyrinth-like maze and was once an Aboriginal midden. Another option while anchored at Winyalkan Bay is a visit to a series Wandjina and Gwion Gwion rock art galleries at Swift Bay.

MONTGOMERY REEF (YOWJAB)

Montgomery Reef is a biologically diverse area covering over 300 sq km and was named by Phillip Parker King. Twice daily, as the sea recedes in mammoth 11m tides, Montgomery Reef rises from the Indian Ocean in a cascade of rushing water revealing a flat-topped reef pockmarked with rock pools and rivulets.

As the reef emerges, we get up close in our Xplorer and Zodiac inflatable tenders to witness the spectacle as our Expedition Team share their knowledge on the formation of the reef and the myriad wildlife. Opportunistic birds take advantage of the emerging reef, feeding on marine life left exposed in rock pools. Turtles, dolphins, dugongs and sawfish too are also attracted to feeding opportunities as the ocean recedes.

The ocean is awash in a swirl of eddies and whirlpools as the moon's gravitational force takes hold. Then, a few hours later the entire water-borne drama is reversed as the tide comes in and Montgomery Reef disappears below sea level.

TALBOT BAY, HORIZONTAL WATERFALLS (GARAANNGADDIM)

The Horizontal Falls are one of the Kimberley's biggest attractions and are a result of the mammoth 11m tides the Kimberley is renowned for. Naturalist David Attenborough described the Horizontal Falls as 'one of the greatest natural wonders of the world.'

This natural phenomenon has been created as the ocean thunders through a narrow gorge in the McLarty Ranges. Water builds up on one side and is forcibly pushed through the bottleneck, creating a rushing horizontal waterfall of swiftly flowing seawater. Riding the rapids on our Zodiac inflatable tenders is one of the highlights of our Kimberley expedition cruises.

Talbot Bay is at the heart of the Buccaneer Archipelago, where rocks on the 800 or so islands are estimated at over 2 billion years old. At Cyclone Creek, you will see evidence of massive geological forces in the impressive rock formations.

LACEPEDE ISLANDS (DURING TURTLE SEASON)

The Lacepede Islands are a protected class-A nature reserve and are significant as a seabird nesting rookery for brown boobies and roseate terns. Other species often sighted at the Lacepedes include Australian Pelicans, frigate birds, egrets and gulls. The four low-lying islands are also an important breeding and nesting habitat for green turtles. Cruise the lagoon in tenders and witness the myriad wildlife here.

ROWLEY SHOALS

At the edge of the continental shelf, 170 nautical miles offshore, lie the Rowley Shoals a chain of 3 coral atolls including Clerke, Mermaid and Imperieuse Reefs. The shoals, named by Captain Phillip Parker King, offer some of the best snorkelling and diving opportunities in the world. Their shallow lagoons are inhabited by myriad coral species and marine life, including giant potato cod, Maori wrasse, at least 233 species of coral and 688 species of fish – many of which are not found on other coral reefs. Diving along the outside edge of the shoals one can view colourful soft corals, hammerheads and pelagic fish. Water clarity here is unparalleled, making for superb underwater photography opportunities.

Guided by our onboard marine biologist Sara Perrott, snorkel away the day in the coral gardens of the Aquarium at Clerke Reef, or dive along the sheer vertical walls and through coral canyons.

DAMPIER ARCHIPELAGO

Consisting of 42 islands and islets, 25 of which are nature reserves; the iron-red islands of the Dampier Archipelago stand in bright contrast to the turquoise waters which surround them. The archipelago not only offers exceptional natural beauty but significant sites for Aboriginal and European Heritage, many of which are in National Heritage Listed Areas. Named after English explorer William Dampier who first visited the islands aboard the Cygnet in 1699; the islands' earliest inhabitants were the Yaburara people, as is evidenced by the thousands of rock engravings, shell middens and stone arrangements scattered across the area.

There will be ample opportunity to explore the area's historical and cultural sites under the guidance of the Murujuga Land and Sea Rangers before taking to the azure waters for swimming and kayaking. Birdwatchers will have the opportunity to see several species of migratory waders as well as sea eagles and ospreys. With luck, we may even see the elusive Rothschild's rock wallaby.

Please note viewing of aboriginal petroglyphs is subject to approval and guidance by traditional owners of the area, and cannot be guaranteed.

EXMOUTH & NINGALOO REEF

The World Heritage-listed Ningaloo Reef is the turquoise jewel in the crown of the Western Australian coastline. Spanning over 5,000 square kilometres, this is one of the largest fringing reefs in the world. Its inner and outer reefs create a diverse range of habitats for vibrant corals and more than 500 species of fish. This is also where marine life comes to feed during their migrations, including humpback whales and giant manta rays. It is also a coastline with a fascinating heritage, where lonely whalers battled it out against the elements. Today you have a choice between two tours: From Exmouth, take a coach tour to discover Cape Range National Park, enjoy a nature walk at Yardie Creek, and visit the Vlamingh Head lighthouse.

We enter the Recherche Archipelago, a group of 105 islands and many more rocky outcrops. Here, many species of birds as well as sea lions and fur seals, come to breed. The islands are scattered across the blue water – a beautiful seascape when viewed from shore with turquoise waters washing against grey and tan-coloured granite.



Here, we will land at Woody Island to explore. Located just 15km off the coast of Esperance, Woody Island's stands of tall trees have given it its name. Surrounded by pristine, clear waters, you will have the opportunity to experience the snorkel trail in Shearwater Bay. The cool southern waters provide excellent visibility for your journey of discovery.

There are several beautiful walks on the island, from easy to moderate, and you will appreciate the spectacular views across the archipelago along the way. For the bird lovers, a wide variety of bird life is sighted on the island, from land dwellers to those dependent on the sea. Spot singing & new holland honeyeaters, silvereyes, red-eared firetails, rock parrots and sacred kingfisher. While along the walk trails catch a glimpse of the golden whistlers, brown quails, spotted pardalotes, brush bronzewings, raptors and fan tailed cuckoo.

For those who aren't interested in one of the islands walks, we will have the opportunity to enjoy an Xplorer tender cruise along the sheltered side of the island.

CAPE LE GRAND NATIONAL PARK - LUCKY BAY

Cape Le Grand National Park's massive granite peaks, rolling heathlands and curving white beaches are some of the most spectacular landscapes along the southern coast. Along quiet Lucky Bay, kangaroos are known to laze on the whitest sand in Australia. The turquoise water is wonderful for an invigorating swim, and if time permits, we will enjoy a moderate hike on part of the Le Grand Coastal trail. The Cape Le Grande coastal trail passes through beautiful coastal scenery, and the national park is home to pygmy possums, western grey kangaroos and many colourful native wildflowers.

TWO SEA DAYS - BUNDA CLIFF WEST & BUNDA CLIFF EAST

Spend two days crossing the mighty Great Australian Bight. About halfway through our voyage, the Bunda Cliffs will come into view.

For 100km along the Great Australian Bight runs these awe-inspiring 120m tall white chalky Bunda Cliffs. This 300m thick limestone slab was once part of an ancient seabed and now forms the Nullarbor Plain, extending far inland with many layers containing many fossils. Depending on sea conditions we will cruise along the cliffs and enjoy a vantage point from sea very rarely experienced.

FLINDERS ISLAND

Flinders Island is located about 35km from the Eyre Peninsula Coast and has been owned by the Woolford family since 1979, where they fish for abalone and are working to establish a safe haven for vulnerable native species. Meet Tobin and Jonas Woolford on Front Beach, learn of the island's history and conservation projects on the island. There will also be the opportunity to taste freshly pan-seared abalone and explore the historic shearing sheds.

COFFIN BAY

On a tour with an experienced local oyster farmer, taste fresh pacific and native Angasi oysters straight out of the sea and learn firsthand how to shuck an oyster. Learn about the history of Coffin Bay and the oyster farming practices of the famous Coffin Bay Oyster. Prepare for a seafood tasting sensation!

In the afternoon, land ashore at one of Coffin Bay National Park's stunning beaches for beachcombing and walks.

PENNESHAW, KANGAROO ISLAND

At Kangaroo Island guests have the opportunity to choose from a selection of excursion options. Those with an interest in wildlife might like to visit Seal Bay, home of the third largest colony of Australian sea lions in the world. Or delight in some of Kangaroo Islands local produce on a tour to Island Beehive, Emu Ridge

Eucalyptus and Emu Bay Lavender. If history and walks are of interest head out to Cape Willoughby, for a tour of the lighthouse.

ADELAIDE

Arrive to Adelaide early this morning (24 November 2025) for a full day to explore the city at your leisure. There will also be opportunities for guests to visit Geoff Merrill Winery through out the day. *Coral Adventurer* departs late this evening for her next port of call.

PORT FAIRY

Spend the morning exploring Port Fairy at your leisure. Walk the heritage trail to view grand public buildings which sit side by side with restored whalers' cottages and Georgian-styled merchant homes. Or visit Griffiths Island: with its colony of shearwater seabirds, winding pathways, and the spectacular lighthouse at the eastern tip, it is a great place to explore. Continue to the infamous Shipwreck Coast. This stretch of coastline is a graveyard of around 700 submerged wrecks, leaving behind their fascinating stories. Captain Matthew Flinders notably said he had never seen a 'more fearful section of coastline'.

APOLLO BAY & 12 APOSTLES

Apollo Bay is a charming seaside town situated in the foothills of the Otway Ranges on the Great Ocean Road, surrounded by lush rainforest and towering mountains. Apollo Bay was given its name by Captain Loutit in 1845 after his trading vessel. Around that time the area was frequented by sailors, whalers, sealers, and timber cutters who began coming to the area in the early 1800s. However, settlers didn't begin building their homesteads in the Apollo Bay area until 1849 - four years after the town was founded.

We will have the option to visit the great Ocean Road Brewhouse to sample some local tastes of the region, or take a guided walk at a wildlife sanctuary on the edge of Great Otway National Park.

View the rugged splendour of the renowned 12 Apostles that lie in the Southern Ocean off Victoria's coast. The limestone cliffs are subject to constant erosion from the impact of storms and winds, which carved the caves in the cliffs. When the caves eroded into arches and collapsed, their 45m high rocky remains were left along the shore.

PHILLIP ISLAND (MILLOWL)

Phillip Island, named after the first Governor of NSW Arthur Phillip, is well known for its tourism, agriculture, and fishing industries. This morning, explore the boardwalks of the area with your local guide, surrounded by the internationally important RAMSAR protected ecosystem vital to ocean food production and health - mangroves. This area is thriving with wildlife and birdlife, including a variety of honeyeaters, parrots, thornbills, pardalotes, silvereyes, and other bush birds. After exploring the reserve, wander through a world-renowned habitat for migratory wader birds and other wildlife species at peaceful Rhyll Inlet. You'll find boardwalks that loop through the tranquil mangroves, saltmarsh, and mudflats, where you'll spot spoonbills, oyster catchers, herons, egrets, cormorants, short, tailed shearwater, and a range of international waders rarely seen in Australia.

LAUNCESTON & THE TAMAR RIVER

Spend two days cruising the scenic Tamar River - which despite its name is actually a tidal estuary over its entire length. Formed by the confluence of the North and South Esk rivers at Launceston, the river's banks are peppered with scenic reserves, historical properties and notable vineyards. Explore the historic pilot station at Low Head, discover the charming city of Launceston, and enjoy our signature food & wine event at Josef Chromy Vineyard.



TWO SEA DAYS

Enjoy two relaxing days at sea with presentations by our expert Guest Lecturers. For free time, many guests choose to chat with new-found-friends, read a book from our onboard library, browse the art gallery or simply gaze out to sea in serene bliss.

SYDNEY

Wake early and enjoy a memorable sunrise sail into Sydney Harbour. We will arrive at the Overseas Passenger Terminal, Circular Quay at 6:00am on 3 December 2025.

While in port, guests can enjoy free time to have time ashore and catch up with any friends or family they have in the area.

We will be departing Sydney at 6:00pm on the same day (3 December 2025) as the sun sets against the iconic landmarks of the Harbour Bridge and Opera House.

SEA DAY

Enjoy a relaxing day at sea with presentations by our expert Guest Lecturers. For free time, many guests choose to chat with new-found-friends, read a book from our onboard library, browse the art gallery or simply gaze out to sea in serene bliss.

TRIAL BAY

Step ashore in Trial Bay for a visit to the historic goal and foreshore markets.

Arrive in Trial Bay in the morning, landing on the beach where we are met by community members. There is the opportunity to visit Trial Bay Gaol, Smokey Cape Lighthouse, and South West Rocks. The community here is very welcoming.

SEA DAY

Enjoy a sea day to spend at your leisure.

TANGALOOMA

Enjoy a snorkel and kayak trail amongst the shipwrecks at Tangalooma. Guests will have the time to relax on the beach or snorkel the famous shipwrecks of the coast. Fifteen vessels were deliberately sunk to form a break wall for small boats also creating an amazing wreck dive and snorkel site. There is a beautiful amount of coral and marine life. Schools of parrotfish, surgeonfish and snapper populate the wrecks. Butterflyfish are common and you might even spot a wobbegong lying on the floor underneath one of the scuttled vessels.

TWO DAYS AT SEA

Enjoy time at sea to spend at your leisure.

K’GARI (FRASER ISLAND)

K’gari (formerly Fraser Island) is the world’s largest sand island and an area of remarkable natural beauty. The island was listed as a World Heritage Area in 1992 to recognise the island’s internationally significant natural features. This land is the traditional country of the Butchulla people.

We will make our way to Kingfisher Lodge for an exciting 4WD tour taking in Lake Mackenzie and Central Station, a former base for harvesting timber. The clear waters of Boorangoora (Lake Mackenzie) are spectacular. Guests can enjoy a pleasant swim in the clear waters.

Stroll along the silent and crystal clear Wanggoolba Creek, as our guides point out Kauri Pine (Agathis robusta) used for shipbuilding, age old Satinae trees used for building piers and ships, and giant staghorns growing on hoop pines amongst the many trees sought as part of the logging industry in the 20th century.

There is the opportunity to enjoy an easy nature walk or explore the culinary delights of K’Gari’s rainforest as part of the Bush-Tucker Experience.

SEA DAY

Enjoy a relaxing day at sea with presentations by our expert Guest Lecturers. For free time, many guests choose to chat with new-found-friends, read a book from our onboard library, browse the art gallery or simply gaze out to sea in serene bliss.

SCAWFELL ISLAND

Scawfell Island is officially regarded as the beginning of the Whitsunday Group of Islands and was identified by Lt James Cook in 1770. Located 40km from Mackay, an unspoilt, hilly, 518-hectare island covered by thick forest and surrounded by reefs offering snorkelling opportunities, and a serene bay great for kayaking if conditions permit.

FUNNEL BAY / WHITSUNDAYS

In the Whitsundays region, guests will take an exclusive charter to the island, where they can relax and enjoy the beach. Step onto the stunning white silica sands of Whitehaven and swim in the iridescent aqua seas just off the shore.

TOWNSVILLE TO LONGREACH

Take a charter flight to experience a day in the outback exploring Longreach and visiting a local legend on his homestead, for dinner and fireside frivolity with Queensland characters.

FINAL DAY AT SEA

Recap on the last 60 days at the Captain’s Farewell Drinks.

DAY 61: DEPART CAIRNS

Our Circumnavigation of Australia adventure concludes in Cairns this morning as we bid farewell to new-found friends, the Master and crew, disembarking at 8:00am.

A complimentary transfer is provided to CBD hotels or the airport.

Transfers to the Northern Beaches or Port Douglas can be arranged on board with the Purser (at cost), if not already arranged prior to embarkation.

This itinerary is an indication of the destinations we visit and activities on offer. Throughout the expedition we may make changes to the itinerary as necessary to maximise your expeditionary experience. Allowances may be made for seasonal variations, weather, tidal conditions, and any other event that may affect the operation of the vessel. Coral Expeditions suggests that you do not arrive on the day of embarkation or depart on the day of disembarkation due to any changes that may occur in scheduling.

CORAL ADVENTURER

Passengers: 120 | Staterooms: 60
Length: 93.4m | Draught: 4.5m | Tonnage: 5,516

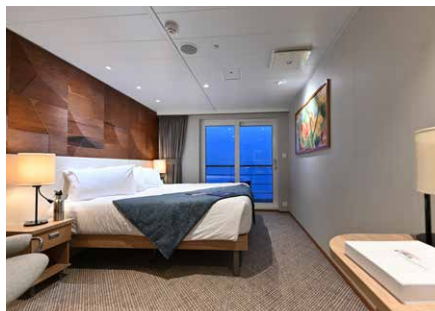
Our expedition vessel *Coral Adventurer*, will be your home for this extraordinary voyage. With accommodation for only 120 guests in 60 staterooms, her relaxed and intimate onboard atmosphere is a trademark of Coral Expeditions.

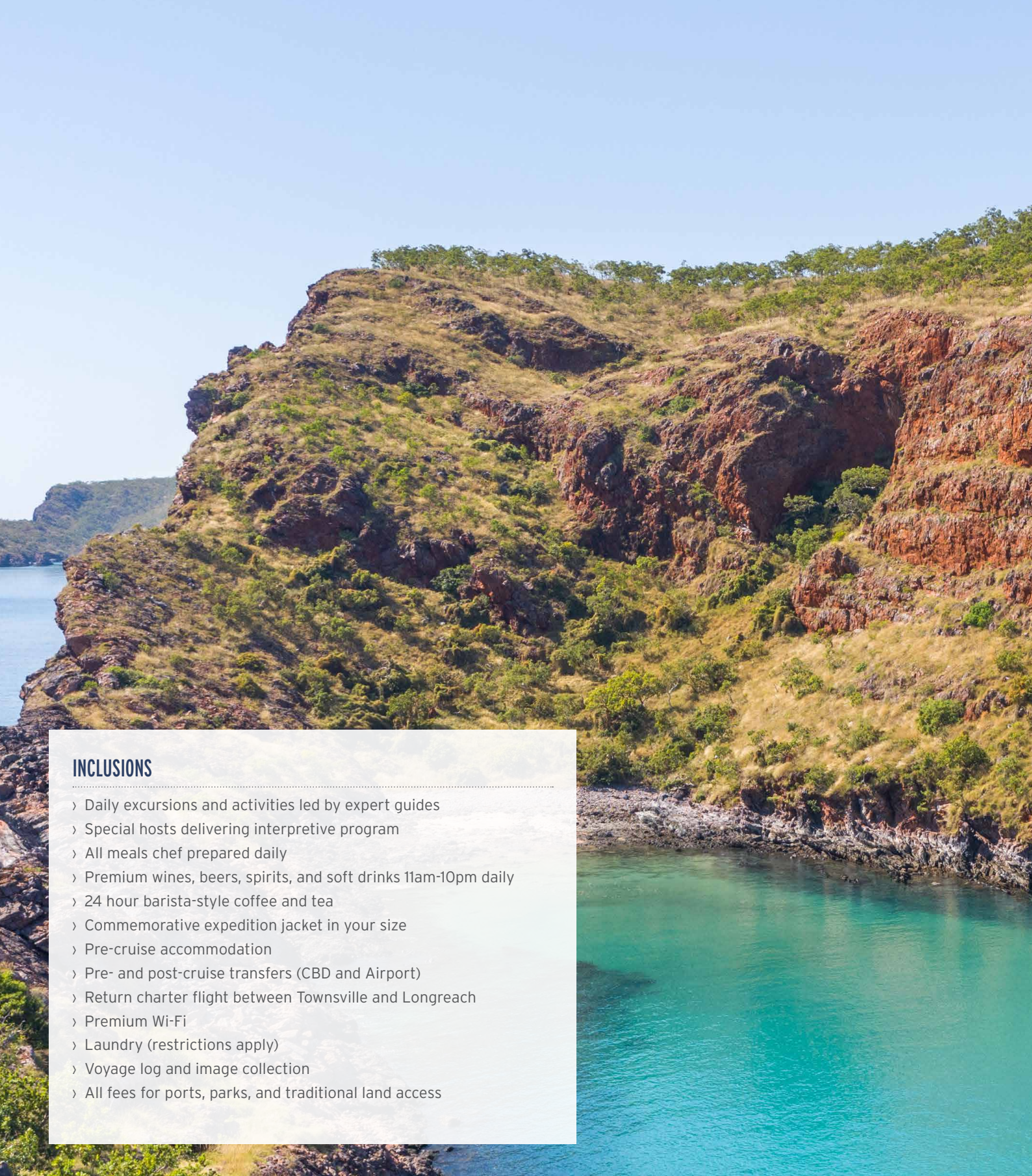
Share the experience of navigation with the Captain with a visit to our open bridge or share stories with new friends at the statement wine-tasting table in the Dining Room. Spacious bar and lounge areas provide relaxation and time to connect, and all Explorer Deck and Bridge Deck staterooms and suites offer private balconies.

Coral Adventurer is purpose-built for comfortable ocean voyages and for exploring remote areas inaccessible to larger cruise ships. She is outfitted with dual Xplorer tenders and eight zodiacs, and our unique hydraulic platform enables easy walk-on boarding for shore excursions. She is Australian flagged and crewed, so you can expect the highest standard of service, environmental responsibility, and the intimate and personal experience of small-ship cruising.

FEATURES

- 2 Xplorer tenders, 6 Zodiacs
- Navigator Lounge in Bridge
- Single seat dining with wine table
- Three cocktail bars
- Well-equipped gym
- Passenger elevator
- Anchor-free technology





INCLUSIONS

- › Daily excursions and activities led by expert guides
- › Special hosts delivering interpretive program
- › All meals chef prepared daily
- › Premium wines, beers, spirits, and soft drinks 11am-10pm daily
- › 24 hour barista-style coffee and tea
- › Commemorative expedition jacket in your size
- › Pre-cruise accommodation
- › Pre- and post-cruise transfers (CBD and Airport)
- › Return charter flight between Townsville and Longreach
- › Premium Wi-Fi
- › Laundry (restrictions apply)
- › Voyage log and image collection
- › All fees for ports, parks, and traditional land access

FARES

	BRIDGE DECK BALCONY SUITE	BRIDGE DECK BALCONY STATEROOM	EXPLORER DECK STATEROOM	PROMENADE DECK STATEROOM	CORAL DECK STATEROOM
TWIN SHARE PER PERSON	\$121,500	\$94,500	\$86,400	\$64,800	\$54,000
SOLE USE*	n/a	n/a	n/a	\$97,200	\$81,000

Fully booked at time of printing



WHY CHOOSE CORAL EXPEDITIONS

Our fleet of three specialised expedition ships and tenders take guests to some of the most beautiful, yet undiscovered islands and coastal regions of the world. Our guests are attracted by our relaxed small ship atmosphere and itineraries larger ships cannot replicate.

At a time when the cruise industry is moving to larger and less personal ships with more gimmicks, we have purposefully limited the size of our ships to maximise the expedition experience. Our cuisine is prepared in small batches from our onboard galley using quality Australian produce and wine. We operate to high Australian standards of safety with qualified Australian crew wherever we go. We were the first to offer interpretive programs reflective of the destinations we visit and to employ Expedition Leaders, Guest Lecturers, Marine Biologists, and SCUBA Instructors - a tradition that continues today.

- **We focus on the destinations.** Connecting guests with nature, culture, and heritage with more time ashore in remote natural areas away from the crowds.
- **A true expedition ethos.** Small ships mean fewer guests and more intimate and personal encounters along the way. We have deep respect and strong connections with the places we visit and maintain flexibility in our planning to make impromptu stops if extraordinary opportunities in nature present.
- **Warm Australian hospitality.** Our all-Australian crew are passionate and proud to share the adventure with you. Always attentive and caring with a friendly and approachable style in keeping with our Australian values.
- **Purpose-built ships.** Designed for tropical expedition access, our fleet is comfortable, safe, and maneuverable enabling you to get in shallow and close to nature with ease where other operators cannot. Plenty of wide-open public spaces and all outward facing staterooms connect you with the destination.
- **Our unique Xplorer tenders.** The safari jeeps of the sea; our Xplorers enable guests safe and easy access onto excursions into remote rivers, reef systems and isolated beaches. All guests get out on excursion at once with no queues or waiting. Shade canopy to protect from the tropical sun, comfortable seats, open sides and audio systems enhance the journey. These are supported by Zodiacs along the way.
- **Local expertise that is unrivalled.** Our expert guides and local crew have decades of experience to draw on regarding the tides, the charts, and the seasons. We get you to the right place at the right time and always explore in a respectful and caring manner.
- **All inclusive.** Your cruise fare covers everything that matters most including excursions, activities, meals and drinks, expert guides, taxes, and fees. Unpack once and then simply relax and enjoy the experience.
- **Our service and care.** Our friendly staff and crew have one focus - to help you enjoy the trip of a lifetime. We will always be willing to assist and with a genuine care that is part of our culture.

This is true expedition cruising. At Coral Expeditions, we have built our reputation on offering a truly immersive and authentic expedition cruise experience. It is more relevant today than ever and sets us apart from the pack.

TASMANIA



CIRCUMNAVIGATION OF AUSTRALIA 2025

DEPARTS AND RETURNS:
Cairns

DATES:
Embark 17 October, 2025
Disembark 16 December, 2025

LENGTH OF VOYAGE:
61 Days (60 nights)

About Coral Expeditions

Recognised as Australia's longest established and most awarded expedition cruise operator, Coral Expeditions is Australia's pioneering cruise line offering a unique style of immersive expeditions. Starting with environmentally sensitive cruises on the Great Barrier Reef, 40 years later the fleet has grown to a purpose-built ocean-going fleet featuring the intimate *Coral Discoverer* and the advanced flagship vessels *Coral Adventurer* and sister ship *Coral Geographer*. All ships feature the company's trademark complement of multiple zodiacs and 'Xplorer' safari tender boats that take guests to shore quickly and comfortably. Head office located in Cairns, Coral Expeditions offers expedition cruises to the Great Barrier Reef, the Kimberley, Tasmania's wilderness coast, Cape York and Arnhem Land, New Zealand and further afield to the small Islands of Japan, New Guinea and the islands of Indonesia.

Call 1800 079 545
Visit coralexpeditions.com
Email explore@coralexpeditions.com

