

2024 - 2025 VOYAGES

# AUSTRALIA'S SOUTH COAST

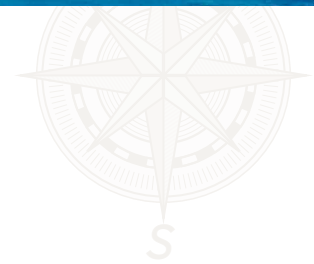


- > Wild Islands of South Australia - 10 Nights - Adelaide to Adelaide
- > Across the Great Australian Bight - 13 Nights - Fremantle to Adelaide
- > Australia's Great Southern Coastline - 14 Nights - Melbourne to Fremantle
- > Bounty of the Southern Ocean - 8 Nights - Adelaide to Melbourne



**coralexpeditions**  
AUSTRALIA'S PIONEERING CRUISE LINE

# AUSTRALIA'S SOUTHERN COASTLINE FOR TRUE EXPLORERS



Explore Australia's southern shores on a small ship expedition. This raw and rugged coastline is fringed by many islands and inlets, carved by the mercurial turquoise waters of the Southern Ocean. Visit islands such as Kangaroo Island, Flinders Island and the Recherche Archipelago - brimming with human and natural histories and often difficult to reach - home to wildlife such as rare wallabies, sea lions and numerous bird species.

A highlight of these itineraries are coastal walks along nature trails, often ending in ocean views or sweeping white-sand beaches. Hosted by expert guides, learn about the flora, fauna and history of these remote habitats. Along the way, enjoy the tastes of the southern coast, indulge in fresh regional seafood and hand-selected local wines.

Find freedom on Australia's southern coastline.

## Voyages

- > **Wild Islands of South Australia**  
10 Nights | Departs Oct & Nov 2024
- > **Across the Great Australian Bight**  
13 & 14 Nights | Departs Oct 2024
- > **Australia's Great Southern Coastline**  
14 Nights | Departs Feb 2024
- > **Bounty of the Southern Ocean**  
8 Nights | Departs Dec 2024

## Expedition Note

These are expedition itineraries covering remote regions. Your Captain and Expedition Team will make changes to the daily schedule when necessary to maximise your experience. These itineraries are indicative - some variation may occur due to weather conditions, safety or local community requirements.

We recommend that you arrive to the embarkation port on the day prior to departure and schedule your own travel arrangements for the following disembarkation due to unexpected changes that may occur in scheduling.

# WHY CHOOSE CORAL EXPEDITIONS

Our fleet of three specialised expedition ships and tenders take guests to some of the most beautiful, yet undiscovered islands and coastal regions of the world. Our guests are attracted by our relaxed small ship atmosphere and itineraries larger ships cannot replicate.

At a time when the cruise industry is moving to larger and less personal ships with more gimmicks, we have purposefully limited the size of our ships to maximise the expedition experience. Our cuisine is prepared in small batches from our onboard galley using quality Australian produce and wine. We operate to high Australian standards of safety with qualified Australian crew wherever we go. We were the first to offer interpretive programs reflective of the destinations we visit and to employ Expedition Leaders, Guest Lecturers, Marine Biologists, and SCUBA Instructors - a tradition that continues today.

- > **We focus on the destinations.** Connecting guests with nature, culture, and heritage with more time ashore in remote natural areas away from the crowds.
- > **A true expedition ethos.** Small ships mean fewer guests and more intimate and personal encounters along the way. We have deep respect and strong connections with the places we visit and maintain flexibility in our planning to make impromptu stops if extraordinary opportunities in nature present.
- > **Warm Australian hospitality.** Our all-Australian crew are passionate and proud to share the adventure with you. Always attentive and caring with a friendly and approachable style in keeping with our Australian values.
- > **Purpose built ships.** Designed for tropical expedition access, our fleet is comfortable, safe, and manoeuvrable enabling you to get in shallow and close to nature with ease where other operators cannot. Plenty of wide-open public spaces and all outward facing cabins connect you with the destination.
- > **Our unique Xplorer tenders.** The safari jeeps of the sea; our Xplorers enable guests safe and easy access onto excursions into remote rivers, reef systems and isolated beaches. All guests get out on excursion at once with no queues or waiting. Shade canopy to protect from the tropical sun, comfortable seats, open sides and audio systems enhance the journey. These are supported by Zodiacs along the way.
- > **Local expertise that is unrivalled.** Our expert guides and local crew have decades of experience to draw on regarding the tides, the charts, and the seasons. We get you to the right place at the right time and always explore in a respectful and caring manner.
- > **All inclusive.** Your cruise fare covers everything that matters most including excursions, activities, meals and drinks, expert guides, taxes, and fees. Unpack once and then simply relax and enjoy the experience.
- > **Our service and care.** Our friendly staff and crew have one focus - to help you enjoy the trip of a lifetime. We will always be willing to assist and with a genuine care that is part of our culture.

This is true expedition cruising. At Coral Expeditions we have built our reputation on offering a truly immersive and authentic expedition cruise experience. It is more relevant today than ever and sets us apart from the pack.

# WILD ISLANDS OF SOUTH AUSTRALIA

ADELAIDE > ADELAIDE

10 NIGHTS | OCTOBER & NOVEMBER 2024, NOVEMBER & DECEMBER 2025



①

## Expedition Highlights

- > Visit some of South Australia's most historic lighthouses at Cape Willoughby and Cape Donington and learn their stories
- > See native wildlife including playful dolphins, sea lions, emus, rock wallabies, kangaroos and numerous birds
- > Shuck your own oysters at Coffin Bay, paired with local wines
- > Enjoy sunset sailing past the stunning coastal formations of Cape Jervis and Kangaroo Island
- > Meet the abalone divers of Eyrewoolf Abalone and taste pan-seared green-lip abalone on the beach at Flinders Island
- > Be rewarded with striking views and peaceful native forest environs on South Australia's coastal walking trails at Cape Donington & Lashmar Conservation Park
- > Enjoy a variety of walks including the coastal walks at Cape Willoughby, dune walk at Point Sir Isaac, beach walks at Reevesby and Forest walks of Cape Donington and Lashmar Conservation Park

See Page 12 for Departures & Fares



[VIEW AVAILABILITY & BOOK ONLINE >](#)

## ITINERARY: 10 NIGHTS > ADELAIDE TO ADELAIDE

### DAY 1: DEPART ADELAIDE

Arrive at the Outer Harbour Adelaide Berth 1 for boarding at 4:00pm, with time to settle into your stateroom before our 5:00pm departure. Settle into your cabin and familiarise yourself with the ship before your first delicious dinner.

*\*The South Australian itinerary is particularly weather driven, and changes may be made to the order of locations visited to best suit conditions at the time. Below is a summary of the locations visited and activities offered, however further variations may be made.*

### KANGAROO ISLAND: ANTECHAMBER BAY & CAPE WILLOUGHBY

Antechamber Bay, located on the north coast of the Dudley Peninsula, is one of Kangaroo Island's finest coastal havens. The deserted, untouched long beach of the bay is where the Chapman River meets the sea. The area is covered with forest of gum trees and narrow-leaf mallee which makes the walk at Lashmar Conservation Park truly a magnificent experience.

At the other end of the bay, Cape Willoughby juts into the 'Backstairs Passage' - the narrow strait between Kangaroo Island and the Fleurieu Peninsula. Lighting this 14km wide strait is the Cape Willoughby Light Station. We will visit the Lighthouse keeper's cottage, learn of its interesting stories, and have opportunity to climb the light house itself. In the grounds, we will do a loop walk from the Lighthouse to the beautiful Smuggler's Cove and often the special Kangaroo Island wallaby are spotted along the way.

### KANGAROO ISLAND: SEAL BAY AND AMERICAN RIVER

Today enjoy a truly unforgettable wildlife experience at Seal Bay. After traversing the scenic interior of Kangaroo Island by coach from American River, we will visit the heart of the third largest colony of endangered Australian sea lion, and share the beach with these magnificent animals. This is the only place in the world you can see Australian sea lions at close quarters and walk on a beach where pups frolic, bulls battle for supremacy and resting mothers suckle their young. Later enjoy walks around American River, a township surrounded by bushland and protected wetlands, boasting spectacular views stretching north to mainland Australia.

### THE YORKE PENINSULA

The Yorke Peninsula is fringed by over 700 kilometres of pristine coastline. Known for rugged beaches boasting spectacular views over the Investigator Strait and Spencer Gulf, its shoreline is studded with a number of shipwrecks. Here we will visit Dhillba-Guuranda (Innes) National Park, where emus, kangaroos and tammar wallabies are commonly spotted, as are dolphins, seals and whales in its adjacent waters. Depending on the prevailing wind and swell, we will land at Dolphin Beach and walk to the Royston Head lookout, or come ashore at Little Emu Beach in the southeast and walk to the post-card perfect Stenhouse Bay Jetty.

### REEVESBY ISLAND

Head to Reevesby Island, part of the Sir Joseph Banks Group; an archipelago on the eastern coast of the Eyre Peninsula. Accessible only by boat, this island is one of the largest in the group. Women played a major role in the island's history, especially in the early days leading up to the Great Depression. Take a hike around this important seabird breeding site and visit the homestead and machinery sheds. This beautiful chain of islands offers a range of sheltered bays, golden sand beaches and reefs teeming with marine life.

### FLINDERS ISLAND

Located around 35kms from the Eyre Peninsula Coast, Flinders Island has a long history of sealing, whaling, and farming. Owned by the Woolford family since 1979, they run an established sheep farm, abalone harvesting business and are working to establish a safe haven for vulnerable native species. Meet the Woolford family to learn about the history and conservation projects on the island.

Visit the Kapara shipwreck at Bryant's Bay, and stroll through the shearing sheds at the farm. Taste fresh abalone at Eyrewoolf Abalone.

### COFFIN BAY

Bordered by sea and National Parks; Coffin Bay is a stunning destination. The pristine waters of the bays in this area are home to numerous pods of dolphins, sea lions, seals, and many seabirds. Emus and kangaroos roam and the natural beauty of the turquoise sea, white sand dunes, and bright blue sky is a wonderful backdrop to our day's adventures.

Here we will walk through the Coffin Bay National Park at Point Sir Isaac to get an understanding of the forests and environment - enjoy the interpretation of the heathlands, mallee forest and she-oak woodlands. Discover secluded beaches and explore coastal trails, with the opportunity to kayak if conditions permit.

### BOSTON ISLAND

Today we explore Boston Island, which lies between Port Lincoln and Cape Donington. Roughly 6km long, Boston Island is very hilly and has four beautiful beaches. Within the island landmass there is about 2,500 acres of grassy, hilly slopes with many sheep. Given its sheltered coastal aspect there is much birdlife on the island with sea eagles, Cape Barren geese, wedge-tailed eagles and some 40 or so other species that make the island their home. Explore this important seabird breeding area, with walks along golden sand beaches and learn of the history of this island.

### CAPE DONINGTON & MACLAREN POINT

A headland at the most northerly part of the Jussieu Peninsula, on the east coast of the Eyre Peninsula, Cape Donington is a great spot to enjoy refreshing sea views and rocky coastline. Take a dip at Cape Donington Beach before heading along the 2km trail over to September Beach. Keep an eye out for western grey kangaroos, emus or goannas near the Cape Donington lighthouse, or head out to Donington Island to view long-nosed fur seals or Australian sea lions from the Xplorer.

### KANGAROO ISLAND: PENNESHAW

As a secondary option, we may visit historical Penneshaw. Landing at Hogs Bay we will learn of the history of Baudin and Flinders. Here you have three unique walking options to choose from: Kangaroo Island Sculpture Trail, Fireball Bates Walking Trail, and Wallaby Track. We also cruise past the rarely viewed northern cliffs of Kangaroo Island towards Cape Borda.

### DAY 11: ARRIVE ADELAIDE

This morning we arrive into Adelaide for an 8:00am disembarkation. Complimentary post-cruise transfers to the airport or CBD will be available. These will be organised onboard with the Purser.

# ACROSS THE GREAT AUSTRALIAN BIGHT

ADELAIDE & FREMANTLE

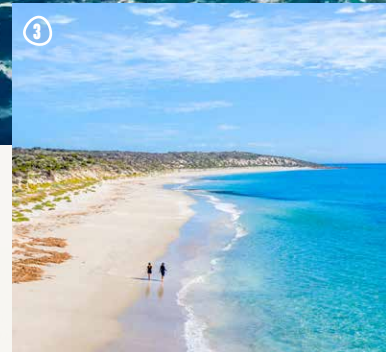
13 & 14 NIGHTS | OCTOBER 2024 & 2025

①

## Expedition Highlights

- > Get close to the large stingrays and eagle rays that swim in the shallows of Hamelin Bay
- > Hike the spectacular coast of Cape Naturaliste & Point Ann
- > Indulge in a tour and cellar door experiences in the award-winning Margaret River wine country
- > Climb Cape Leeuwin lighthouse, the tallest on mainland Australia, to take in the view over the Southern Ocean
- > Stroll through breath-taking Jewel Cave at Augusta and learn about its formation over thousands of years
- > Enjoy sunset drinks alongside the friendly kangaroos on the sweeping white beach of Lucky Bay
- > Discover the diverse islands of the Archipelago of the Recherche and follow the snorkel trail at Shearwater Bay
- > Learn to shuck your own delicious oysters fresh from the waters of Coffin Bay

See Page 12 for Departures & Fares



[VIEW AVAILABILITY & BOOK ONLINE >](#)



## ITINERARY: 13 & 14 NIGHTS > BETWEEN FREMANTLE AND ADELAIDE

### DAY 1: DEPART FREMANTLE

Board in Fremantle at 4:00pm for a 5:00pm departure.

### DAYS 2-13: KEY DESTINATIONS OF YOUR EXPEDITION

*Your Expedition Team may make changes to the itinerary in order to maximise your expedition experience. Each direction has slight differences to allow for timing, winds and tides.*

#### CAPE NATURALISTE & DUNSBOROUGH

Cape Naturaliste is known for its spectacular scenery and some of the best walking tracks in the Margaret River Region. Today explore these walking trails and visit the Cape Naturaliste Lighthouse before spending some free time in the charming town of Dunsborough. Later, visit stunning Meelup Beach for sunbathing and swimming, followed by sunset drinks on the beach.

#### HAMELIN BAY & MARGARET RIVER

Hamelin Bay, a serene sandy bay, is famous for the abundance of stingrays that swim in the shallows. Snorkel or wade alongside these giant rays, before a walk to a nearby lake for birdwatching. Spend the afternoon in the beautiful Margaret River wine region and relax on a luxury coach tour to enjoy tastings and cellar-door visits at leading wineries.

#### AUGUSTA

Augusta is our gateway to the naturally beautiful South West. Today, climb the historic Cape Leeuwin Lighthouse, built in 1896, and discover the exploration history of the region. Explore Jewel Cave, known for its crystal-encrusted decorations of delicate helectites and stalagmites. Later, enjoy free time to explore the township.

#### BREAKSEA ISLAND & ARPENTEUR NATURE RESERVES

Named for its weather-beaten appearance and the protection it offers, Breaksea Island is home to fur seals and Australian sea lions. Spend time observing these playful and curious creatures in their natural habitat. This afternoon, explore Arpenteur Nature Reserves to spot rare birds including the red-winged fairy-wren and New Holland honey-eater, or take a swim at the beach.

#### BREMER BAY & POINT ANN

This tiny coastal town is renowned for having some of the most beautiful beaches in the world. Spend the afternoon swimming, snorkelling or relaxing on the beach. The tranquility of the surroundings and the opportunity to observe the unique marine life of the area make Bremer Bay a memorable stop. In the afternoon we visit Point Ann, located in the Fitzgerald National Park. The Point Ann platform is known to be a great vista for lookouts, while the 1.5km leisurely bush walk follows the site of the original rabbit proof fence, with superb views over Point Charles Bay.

#### WOODY ISLAND, RECHERCHE ARCHIPELAGO

The Recherche Archipelago is a vast group of islands and rocky outcrops scattered across the blue waters of the Southern Ocean. Explore Woody Island for hiking and birdwatching and experience the snorkel trail at Shearwater Bay.

#### LUCKY BAY & CAPE LE GRAND NATIONAL PARK

Known for massive granite peaks, rolling heath-lands and sweeping beaches, Lucky Bay is popular with kangaroos who laze on its soft white sand. We will enjoy a swim or hike a section of the Le Grand Coastal Trail, where you may spot pygmy possums, western grey kangaroos and many native wildflowers. As the sun sets, enjoy beach drinks with the curious kangaroos.

#### YOKINUP BAY & CAPE ARID NATIONAL PARK

The pristine and remote wilderness of Cape Arid is an important conservation area for 1,100 species of plants and more than 160 bird species. Relax on Yokinup Bay's broad white beaches washed by blue seas and birdwatch at Thomas River estuary. We may have the opportunity to explore historic whaling station ruins.

#### GREAT AUSTRALIAN BIGHT

Our crossing of the Great Australian Bight is an exciting moment for those who love the sea. The Great Australian Bight Marine Park protects southern right whales and is home to 80% of the Australian sea lion population.

#### STREAKY BAY

Streaky Bay and surrounding regions are known for their great variety of landscapes, from untouched native scrub land and farming land to cliffs and surf beaches. This morning, enjoy a walking tour of the town, ending at the museum.

#### COFFIN BAY

We arrive in tranquil Coffin Bay this morning to swim, snorkel or kayak, looking out for marine life as we explore the water ways. This afternoon, experience a once-in-a-lifetime culinary experience at Coffin Bay Oyster Farm. Don waders and sit at the Saltwater Pavilion to taste oysters fresh out of the sea and learn how to shuck an oyster. Prepare for a seafood tasting sensation!

#### DAY 14: ARRIVE ADELAIDE

Arrive in Adelaide 7:00am for disembarkation at 7:30am. A post cruise transfer to the CBD or airport is included.



# AUSTRALIA'S GREAT SOUTHERN COASTLINE

MELBOURNE TO FREMANTLE

14 NIGHTS | FEBRUARY 2024



①

## Expedition Highlights

- > Climb Cape Leeuwin lighthouse, the tallest on mainland Australia, to take in the view over the Southern Ocean
- > Learn to shuck your own delicious oysters fresh from the waters of Coffin Bay
- > Meet with the Woolford's at Flinders Island for a beachside abalone tasting and learn the history and current conservation projects of the island
- > Stroll through breath-taking Jewel Cave at Augusta and learn about its formation over thousands of years
- > Relax and enjoy sunset drinks alongside the friendly kangaroos at wildlife haven Lucky Bay
- > Swim with the majestic stingrays and eagle rays that swim in the shallows of Hamelin Bay
- > Indulge in tasting experiences in the award-winning Margaret River wine country

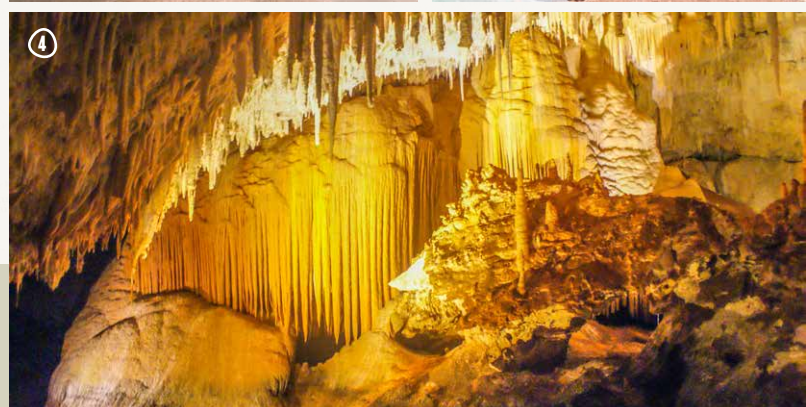
See Page 12 for Departures & Fares



②



③



④

[VIEW AVAILABILITY & BOOK ONLINE >](#)





## ITINERARY: 14 NIGHTS > MELBOURNE TO FREMANTLE

### DAY 1: DEPART MELBOURNE

Board Coral Geographer at 4:00pm for a 5:00pm departure.

### DAYS 2-13: KEY DESTINATIONS OF YOUR EXPEDITION

*No two cruises with Coral Expeditions will be the same, each expedition is crafted by our experienced Masters and Expedition Team around the tides, weather and sea conditions. Below is a selection of the key destinations we visit. This itinerary includes 5 days at sea.*

#### APOLLO BAY

Located along Victoria's Great Ocean Road, Apollo Bay is part of the Great Otway National Park. Explore the natural beauty of this location by strolling the park to spot the 3 cascades of the Triplet Falls and walk to the lookout for panoramic views of the seascape.

#### 12 APOSTLES

View the rugged splendor of the renowned 12 Apostles that lie in the Southern Ocean off Victoria's coast. The limestone cliffs are subject to constant erosion from the impact of storms and winds, which carved the caves in the cliffs. When the caves eroded into arches and collapsed, their 45m high rocky remains were left along the shore.

#### PORT FAIRY

Enjoy a walking town tour of this historic heritage settlement. Grand public buildings sit side by side with restored whalers' cottages and Georgian styled merchant homes. Continue to the infamous Shipwreck Coast. This stretch of coastline is graveyard to around 700 submerged wrecks, leaving behind their fascinating stories. Captain Matthew Flinders notably said he had never seen a 'more fearful section of coastline'.

#### ROBE

Spend time today in the historic and picturesque town of Robe. Located on the Limestone Coast, it offers incredible views and unique food, drink and shopping opportunities. One of Australia's most character-filled small towns, Robe is known for its cottage industries. Spend your day exploring through the quaint shops and craft breweries or relax on the beach and watch surfers catching a wave.

#### KANGAROO ISLAND

Antechamber Bay, located on the north coast of the Dudley Peninsula, is one of Kangaroo Island's finest coastal havens. The deserted, untouched long beach of the bay is where Chapman river meets the sea. The area is covered with forest of gum trees and narrow-leaf mallee which makes the walk at Lashmar Conservation park truly a magnificent experience. As a secondary option, we may visit historical Penneshaw. Landing at Hogs Bay where we will learn of the history of Baudin and Flinders. We may also cruise past the rarely viewed northern cliffs of Kangaroo Island towards Cape Borda.

#### COFFIN BAY

Here we will hike through the Coffin Bay National Park to get an understanding of the forests and environment - enjoy the interpretation of the heathlands, mallee forest and she-oak woodlands. Discover the tranquil bays and snorkel or kayak with the chance to spot some of the marine life. There is also the opportunity to enjoy an unforgettable wild cuisine experience - enjoy a small boat cruise along the oyster beds to collect your oysters and enjoy them fresh from the sea.

#### FLINDERS ISLAND

Flinders Island is located about 35km from the Eyre Peninsula Coast and has been owned by the Woolford family since 1979, where they fish for abalone and are working to establish a safe haven for vulnerable native species. Meet Tobin and Jonas Woolford on Front Beach, learn of the island's history and taste freshly pan-seared abalone. Explore the historic shearing sheds and head to Bryant's Bay to visit the Kapara shipwreck

#### BUNDA CLIFFS

For 100km along the Great Australian Bight runs these awe inspiring 120m tall white chalky Bunda Cliffs. This 300m thick limestone slab was once part of an ancient seabed, and now forms the Nullarbor Plain, extending far inland many layers containing many fossils. This is a very rarely explored area of the Australian coastline with over 1000 islands and our visit will be an adventurous exploration of the rocky islands and sweeping beaches of the region. Depending on sea conditions we will cruise along the cliffs and enjoy a vantage point from sea very rarely experienced.

#### WOODY ISLAND

Located just 15km off the coast of Esperance, Woody Island's stands of tall trees have given it its name. Surrounded by pristine, clear waters, you will have the opportunity to experience the snorkel trail in Shearwater Bay. The cool southern waters provide excellent visibility for your journey of discovery. There are several beautiful walks on the island, from easy to moderate, and you will appreciate the spectacular views across the archipelago along the way. For the bird lovers, a wide variety of bird life is sighted on the island.

#### LUCKY BAY

Along quiet Lucky Bay, kangaroos are known to laze on the whitest sand in Australia. Enjoy time on the beach meeting the friendly wildlife and the turquoise water is wonderful for a quick swim. If time permits, enjoy a walk to Thistle Cove, taking in the peaceful beauty of the national park, which is home to pygmy possums, western grey kangaroos and many colourful native wildflowers.

#### ALBANY

Albany is the oldest colonial settlement in Western Australia, predating Perth and Fremantle by over two years. For many years, it was the colony's only deep-water port, having a place of eminence on shipping services between Britain and its Australian colonies. The town has a role in the ANZAC legend, being the last port of call for troop ships departing with infantry and cavalry horses from Australia in the First World War. Guests will have the opportunity to visit the National ANZAC centre or Albany's Whaling Station, exploring an intact whale processing factory and whale chasing ship, fully restored and ready to discover. Guests also have the option to enjoy free time in Albany, with opportunity to view the Museum of the Great Southern.

#### AUGUSTA

Augusta is the most south-western town in Australia and is nearby to the towering karri timber of Boranup Forest and spectacular Jewel Cave. We will visit Jewel Cave, an awe-inspiring and extremely well decorated cave, containing many beautiful examples of delicate helictites, cave coral, pendulites, a very large stalagmite called 'The Karri Forest' and beautiful examples of flowstone such as 'The Frozen Waterfall' and 'The Organ-Pipes'. Remarkably, fossilised remains of several Tasmanian Tigers have been discovered within Jewel Cave.

#### HAMELIN BAY & MARGARET RIVER

Hamelin Bay is located on the southwest coast on a serene open sandy bay, famous for the abundance of stingrays which frequent the bay. Snorkel with these friendly giant rays, which can measure up to 2 meters wide, and love to swim up close to snorkellers. With clear and calm water, this is a great snorkel spot for all levels to enjoy interesting fish and plant life in the bay. A quintessential Western Australian destination, Margaret River is flanked with national parks including towering forests, pristine coastlines, and rugged granite outcrops. Spend the afternoon savouring a wine tasting at the award-winning Leeuwin Winery, with time to view the art gallery and walk the grounds of this picturesque Estate.

#### DAY 15: ARRIVE FREMANTLE

Arrive in Fremantle at 8:00am as we say goodbye to fellow travellers and crew before a 9:00am disembarkation. A complimentary post-cruise transfers to the airport or CBD will be available.

# BOUNTY OF THE SOUTHERN OCEAN

ADELAIDE TO MELBOURNE

8 NIGHTS | DECEMBER 2024



①

## Expedition Highlights

- > **Signature Event** - Enjoy a special 'Tastes of the Southern Ocean' dinner in the historic fishing township of Port McDonnell (Ngaranga) hosted by Jamie Carter, Executive Chef, Sidewood Estate, and showcasing the best of South Australian premium wines.
- > Visit Kangaroo Island and sample award winning locally farmed sustainable Abalone, wines and produce
- > Indulge in freshly caught Australian Lobster in the quaint fishing port of Robe
- > Discover the remarkable world of fungi as you learn about their ecological importance and myriad of uses with an off the grid entrepreneur
- > Savour artisanal produce paired with premium wines at a local vineyard in the Limestone Coast
- > Circumnavigate a remote island seal colony on Lady Julia Percy Island
- > Discover indigenous hinterland bush food and hear how local families seek to educate on the viability of endemic species in food production
- > Learn about the innovative cooperative approach to sustainable agribusiness on the Great Ocean Road
- > Sail past the 12 Apostles at sunset and raise a glass to this iconic landscape
- > Enjoy guided walks through the RAMSAR protected wetlands of Phillip Island, understanding the importance of this sensitive and essential ecosystem
- > Hear from a passionate chef, one of the forerunners of championing wild foods as you dine on locally sourced Phillip Island produce

See Page 12 for Departures & Fares



②



③



④



[VIEW AVAILABILITY & BOOK ONLINE >](#)

## ITINERARY: 8 NIGHTS > ADELAIDE TO MELBOURNE

### DAY 1: DEPART ADELAIDE (YARTAPUULTI)

Board *Coral Adventurer* 4:00pm at Port Adelaide Passenger Terminal and enjoy time to settle into your stateroom before our 5:00pm departure. As dusk falls, meet your fellow travelers and crew for the Captain's Welcome Drinks.

### DAYS 2-9: KEY DESTINATIONS OF YOUR EXPEDITION

*No two cruises with Coral Expeditions will be the same, each expedition is crafted by our experienced Masters and Expedition Team around the tides, weather and sea conditions. Below is a selection of the key destinations we visit.*

#### KANGAROO ISLAND (KARTA PINTINGGA) & EMU BAY

We land at Emu Bay, located on the northern edge of Kangaroo Island, known to be one of the most expansive white sand beaches on the island. Meet with researchers from Australia's foremost sustainable aquaculture venture to learn about their industry and innovations, before tasting some of the delicious local abalone. Weather permitting enjoy the opportunity for a swim from the beach.

After lunch onboard we return to the island at Antechamber Bay to enjoy uninterrupted views across the Backstairs Passage. Here we will experience some of the best produce Kangaroo Island has to offer, accompanied by wines at Dudley Wines Cellar Door.

#### ROBE (BUNGANDITJ)

The Limestone Coast is an epicurean delight, providing some of the most exotic culinary flavours and ingredients available to contemporary chefs. Today we will have the opportunity to taste fresh southern rock lobsters, accompanied by a South Australian Prosecco.

After rock lobster tasting we will join Feresh Pizarro, who has spent the last 17 years in the world of Sustainable Architecture and Entrepreneurial Education. Feresh is dedicated to promoting, growing, and connecting people to the life-changing world of fungi, and will enlighten us with a masterclass on mushrooms and their myriad of uses for both medicinal and culinary.

This afternoon we will sample some of the craft beers on offer at a boutique wood fired brewery and sample a selection of regional produce. If there's time, wander the architecturally historic ways of Robe and visit Robe's Customs House, or take a walk along the coastal headland trail to the Robe Obelisk.

#### PORT MACDONNELL (NGARANGA) - SIGNATURE DINNER

Port MacDonnell (Ngaranga) is the southernmost town in South Australia. This morning we will take a sunrise walk to Cape Northumberland, offering spectacular wave eroded formations and one of the one of the most spectacular uninterrupted views of the sun rising over the Southern Ocean. This morning also offers the opportunity to spot a penguin!

This evening we will enjoy a signature dinner onboard *Coral Adventurer* prepared by a preeminent South Australian Chef. Amble through South Australian hamlets renowned for food production along the considered 'Taste of South Australian' menu with matching South Australian wines.

#### LADY JULIA PERCY ISLAND (DHINMAR) & PORT FAIRY (GUNDITJMARA)

This morning, enjoy a cruise around Lady Julia Percy Island, which is 2km in length by 1km wide, surrounded by cliffs, rock platforms and reefs. This island is home to an important seal breeding colony.

After our circumnavigation of Lady Julia Percy Island we will travel to Port Fairy. Here, learn about indigenous bush foods and the entrepreneurship that aims to embed the use of sustainable

bush foods across the Australian food landscape. There will also be the opportunity to take a guided stroll amongst the heritage of Port Fairy and stop in at an artisan chocolatier to taste the richness and unique flavours of handcrafted chocolates.

#### PORT CAMPBELL & TWELVE APOSTLES

Go behind the scenes to meet the farmers, makers, and creators, explore the farms, and taste all that is on offer in the hinterland region. Learn the processes involved in a variety of cheeses complete with a tasting at Apostle Whey Cheese. Sample local whiskey at a hinterland distillery, spending time with the distillers learning about their craft.

This afternoon, treat yourself to your favourite flavour of freshly made ice cream at the local Port Campbell ice-creamery. Make sure to leave some room as this afternoon we will sample homemade fudge and discover how Farm Fudge, a local small business, is catering to the demands of Australia's sweet tooth.

This evening soak in the spectacular view of the sun setting as we leisurely pass the 12 Apostles and head towards Apollo Bay.

#### APOLLO BAY (KRAMBRUK)

First inhabited by the Gadubanud (King Parrot people). Apollo Bay is situated in the foothills of the Otway Ranges surrounded by lush rainforest and towering mountains.

This morning, learn the secrets to great coffee with a coffee masterclass including morning tea. We will then enjoy a sample of the best seasonal local produce - exploring the tastes of the region. You will have the opportunity to choose between three tasting options, including beer, wine or gin.

Experience the essence of Apollo Bay's regional produce at its finest with beer tasting, where handcrafted brewing process utilizes pure rainwater from the lush rainforests, exceptional wines with insights into the winery's history, or taste boutique gins that pay homage to Apollo Bay's nautical heritage and native ingredients.

Spend the afternoon exploring the subtle art of tea blending hosted by a local artisan, onboard *Coral Adventurer*.

#### PHILLIP ISLAND (MILLOWL) & RHYLL

Explore the boardwalks of the area with your local guide, surrounded by the internationally important RAMSAR protected ecosystem vital to ocean food production and health. This area is thriving with wildlife and birdlife, including a variety of honeyeaters, parrots, thornbills, pardalotes, silvereyes, and other bush birds. After exploring the Reserve, wander through a world-renowned habitat for migratory wader birds and other wildlife species at peaceful Rhyll Inlet. You'll find boardwalks that loop through the tranquil mangroves, saltmarsh, and mudflats, where you'll spot spoonbills, oyster catchers, herons, egrets, cormorants, short, tailed shearwater, and a range of international waders rarely seen in Australia.

Sample the best of Phillip Island as we visit Rhyll Brewery and Distillery, sampling innovative brews employing innovative methods of production. Listen to the stories of one of Australia's first chefs, Jude Mayall, on how to utilise the unique bush and wild food flavours endemic to Australia and enjoy a lunch that utilises seasonal wild produce and award winning premium cool climate wines.

#### DAY 9: ARRIVE MELBOURNE

This morning, farewell *Coral Adventurer*, crew, and new-found friends as we arrive into the Port of Melbourne at 7:00am, to disembark at 8:00am. There will be post cruise transfers to Melbourne CBD Hotels and Melbourne Airport.

# 2024 DEPARTURES & FARES

## AUSTRALIA'S GREAT SOUTHERN COASTLINE

14 Nights - Departs Melbourne

VISIT >

Date	Departs			
13 February 2024	Melbourne			
2024 Rates: <i>Coral Geographer</i>				
	Bridge Deck Balcony Suite	Explorer Deck	Promenade Deck	Coral Deck
Twin Share	\$19,620	\$14,690	\$10,950	\$9,120
Sole Use	n/a	\$22,035	\$16,425	\$13,680

## ACROSS THE GREAT AUSTRALIAN BIGHT

14 Nights - Departs Adelaide & Fremantle

VISIT >

Date	Departs				
16 October 2024	Fremantle				
2024 Rates: <i>Coral Adventurer</i>					
	Bridge Deck Balcony Suite	Bridge Deck Stateroom	Explorer Deck	Promenade Deck	Coral Deck
Twin Share	\$22,160	\$17,240	\$15,760	\$11,820	\$9,850
Sole Use	n/a	n/a	\$23,640	\$17,730	\$14,775

## WILD ISLANDS OF SOUTH AUSTRALIA

10 Nights - Departs Adelaide

VISIT >

Date	Departs				
31 October 2024	Adelaide				
10 November 2024	Adelaide				
20 November 2024	Adelaide				
2024 Rates: <i>Coral Adventurer</i>					
	Bridge Deck Balcony Suite	Bridge Deck Stateroom	Explorer Deck	Promenade Deck	Coral Deck
Twin Share	\$14,980	\$11,480	\$10,380	\$7,860	\$6,710
Sole Use	n/a	n/a	\$15,570	\$11,790	\$10,065

## BOUNTY OF THE SOUTHERN OCEAN

8 Nights - Departs Melbourne

VISIT >

Date	Departs			
1 December 2024	Adelaide			
2024 Rates: <i>Coral Geographer</i>				
	Bridge Deck Balcony Suite	Explorer Deck	Promenade Deck	Coral Deck
Twin Share	\$16,500	\$11,700	\$8,800	\$7,300
Sole Use	n/a	\$17,550	\$13,200	\$10,950

[VIEW AVAILABILITY & BOOK ONLINE >](#)

Prices are per person, listed in Australian Dollars (AUD) and include GST. Refer to website pricing at time of booking as pricing may be subject to change. \*Limited sole use occupancy available.

# 2025 DEPARTURES & FARES

## AUSTRALIA'S GREAT SOUTHERN COASTLINE

15 Nights - Departs Melbourne

VISIT >

Date	Departs				
31 January 2025	Melbourne				
2025 Rates: <i>Coral Adventurer</i>					
	Bridge Deck Balcony Suite	Bridge Deck Stateroom	Explorer Deck	Promenade Deck	Coral Deck
Twin Share	\$23,740	\$18,460	\$16,880	\$12,660	\$10,550
Sole Use	n/a	n/a	\$25,320	\$18,990	\$15,825

## CUISINE & WINE

On board you will discover a personal and relaxed atmosphere befitting our Australian heritage. We do not have formal nights, organised entertainment or designated seating. Instead, you will enjoy a convivial atmosphere shared with like-minded explorers, with our experienced and friendly crew always at hand.

Enjoy freshly prepared meals from the open galley featuring local ingredients from the regions we visit. Relax in the spacious and open atmosphere of our indoor and outdoor bars and dining areas. Enjoy craft beers, artisanal spirits and wines sourced from the Australia and New Zealand's finest terroirs at the end of a long day ashore.

## WINE SELECTIONS

We offer two wine packages, which guests may purchase in addition to our house selection, that feature hand-selected Australian and New Zealand wines and French champagne.

- > A Taste of Australia Selection: with seven bottles featuring one Australian sparkling, two whites, three reds and a rosé
- > Connoisseur Selection: with six bottles featuring two Whites, three Reds and French Champagne

## Inclusions

- > All excursions with our Expedition Team
- > Use of Xplorer, Zodiacs and kayaks
- > Snorkelling & equipment (SCUBA diving at an additional cost)
- > Daily lectures and briefings with Guest Lecturers
- > All meals, chef-prepared on board
- > Captain's welcome and farewell events, and open bridge access
- > Selected wines, selected beers and house spirits, juices, and soft drinks served with lunch and dinner
- > 24-hour barista-style coffee and tea station
- > All entrance fees to National Parks, ports, traditional owner fees and charges imposed by governing authorities
- > Tips and gratuities
- > Use of all onboard facilities, incl. a reference library
- > Your expedition photos captured during the voyage
- > Post-cruise transfers
- > Wi-fi Access - Standard speed connectivity enabling email, social image sharing, web browsing and messaging



# CORAL ADVENTURER

MAX 120 GUESTS

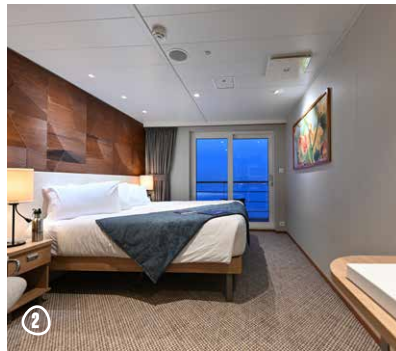
①

## Features

- 2 Xplorer tenders, 6 Zodiacs
- Navigator Lounge in Bridge
- Single seat dining with wine table
- Three cocktail bars
- Well-equipped gym
- Passenger elevator
- Anchor-free technology

## Stateroom Categories

Bridge Deck Balcony Suites	• 55.8sqm • Private Balcony
Bridge Deck Balcony Staterooms	• 21.4sqm • Private Balcony
Explorer Deck Balcony Staterooms	• 21.4sqm • Private Balcony
Promenade Deck Staterooms	• 17sqm • Picture Window
Coral Deck Staterooms	• 17sqm • Porthole Window



# CORAL GEOGRAPHER

MAX 120 GUESTS

④

## Features

- 2 Xplorer tenders, 6 Zodiacs
- Navigator Lounge in Bridge
- Single seat dining with wine table
- Three cocktail bars
- Well-equipped gym
- Passenger elevator
- Anchor-free technology

## Stateroom Categories

Bridge Deck Balcony Suites	• 37.5sqm • Private Balcony
Explorer Deck Balcony Staterooms	• 21.4sqm • Private Balcony
Promenade Deck Staterooms	• 17sqm • Picture Window
Coral Deck Staterooms	• 17sqm • Porthole Window





IMAGES 1 Rock Wallabies, credit Quentin Chester | 2 h Island Lighthouse, credit Isaac Forman | 3 Western River, credit Quentin Chester | 4 Crested Terns

**SMALL SHIPS  
FEWER THAN  
120 GUESTS**

**PURPOSE BUILT  
SHIPS & UNIQUE  
TENDERS**

**REMOTE  
NATURE-BASED  
EXPEDITIONS**

**WARM  
AUSTRALIAN  
HOSPITALITY**

**UNRIVALLED  
LOCAL  
EXPERTISE**



Contact us today or speak with your travel agent.

Online [www.coralexpeditions.com](http://www.coralexpeditions.com)  
 Email [explore@coralexpeditions.com](mailto:explore@coralexpeditions.com)  
 Free call (Australia) 1800 079 545  
 Outside Australia +61 7 4040 9999

Head office PO Box 2093 Cairns 4870 QLD Australia  
 ABN 51 010 809 417



**coralexpeditions**  
 AUSTRALIA'S PIONEERING CRUISE LINE